

Thornfield Road, London, W12

£1,395,000 Freehold

A fabulous four bedroom Victorian mid-terrace house with south facing garden.

Double Reception Room | Kitchen | 4 Bedrooms | 2 Bathrooms | Garden | 1711 Sq Ft / 159 Sq M |
Council Tax Band F | EPC Rating Band D

Winkworth

winkworth.co.uk

for every step...

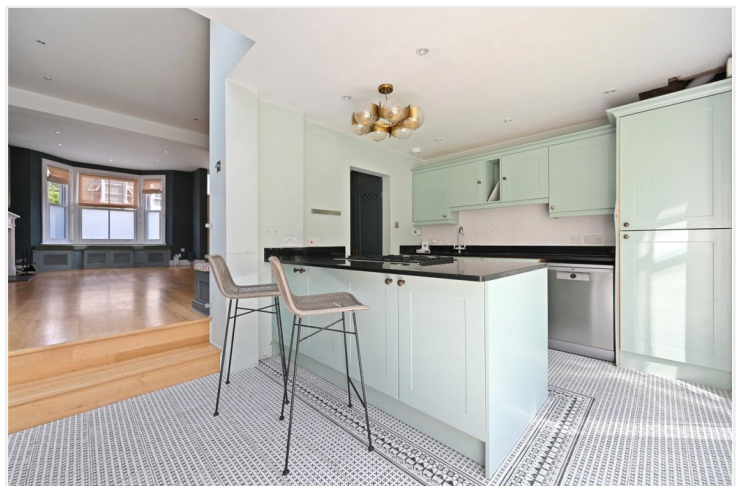


LOCATION

Thornfield Road is ideal for the numerous amenities on offer in Shepherd's Bush, as well as those in Brackenbury Village. The nearest Underground stations are Goldhawk Road, Shepherds Bush Market and Shepherds Bush, where both Central Line and London Overground services are on offer. The Ofsted outstanding rated St Stephen's CofE Primary School is just moments away, whilst a variety of other highly regarded schools in both state and private sectors are also close by.

DESCRIPTION

Well presented throughout, the house offers accommodation comprising double reception room, extended kitchen/dining room, four bedrooms and two bathrooms. The property further benefits from a range of fitted wardrobes, eaves storage and a south facing garden.





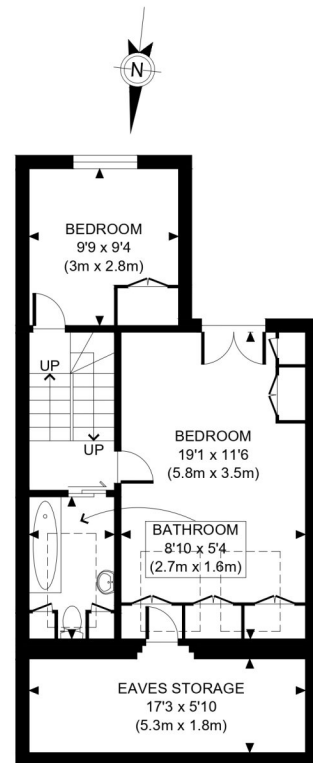
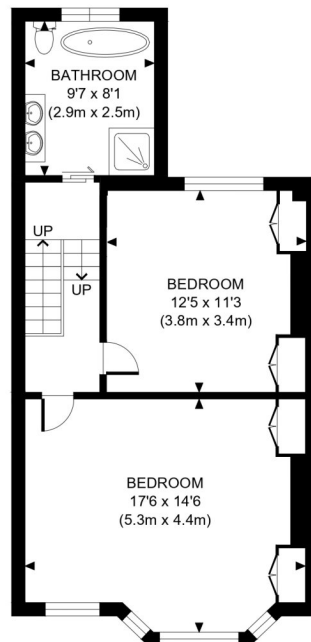
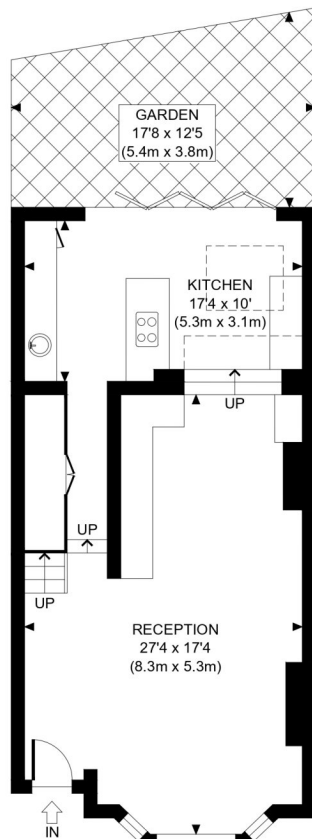
LOCAL AUTHORITY
Hammersmith & Fulham

TENURE
Freehold.

PRICE: £1,395,000 Freehold



Score	Energy rating	Current	Potential
92+	A		
81-91	B		
69-80	C		82 B
55-68	D	69 C	
39-54	E		
21-38	F		
1-20	G		



APPROX. GROSS INTERNAL FLOOR AREA WITH EAVES STORAGE : 1711 SQ FT/ 159 SQM
APPROX. GROSS INTERNAL FLOOR AREA WITHOUT EAVES STORAGE : 1589 SQ FT/ 148 SQM

Winkworth

THORNFIELD ROAD, W12

This plan is for illustrative purposes only and should be used as such by any prospective client. Whilst every attempt has been made to ensure the accuracy of the Floor Plan contained here, measurements of the doors, windows, rooms and any other items are approximate and no responsibility is taken for any errors, omissions, or misstatement. The services, systems and appliances shown have not been tested and no guarantee as to the operability or efficiency can be given.

PROPERTY PHOTO PLANS .CO.UK
ONE STOP SHOP FOR PROPERTY MARKETING

The displayed square footage is taken from the floor plans with measurements created using the Royal Institute of Chartered Surveyors' Code of Practice for Measuring. These measurements are approximate and included for illustrative purposes only. Winkworth does not make any representation as to the accuracy of these measurements and you should seek to verify them for yourself. Winkworth accept no liability for any loss you may suffer if you rely on these measurements.

Shepherds Bush | 020 8735 3266 | shepherdsbush@winkworth.co.uk

Winkworth

for every step...

Under the Property Misdescriptions Act 1991, these Particulars are a guide and act as information only. All details are given in good faith and are believed to be correct at time of printing. Winkworth give no representation as to their accuracy and potential purchasers or tenants must satisfy themselves by inspection or otherwise as to their correctness. No employee of Winkworth has authority to make or give any representation or warranty in relation to this property.