



ASHLONE ROAD, SW15  
**£3,500 PER MONTH**

**A THREE BED TWO BATH OFFERING AN EXCEPTIONAL LIFESTYLE JUST MOMENTS FROM THE RIVER THAMES & PUTNEY ROWING CLUB**

Putney | 020 8877 1000 | [putney@winkworth.co.uk](mailto:putney@winkworth.co.uk)

**Winkworth**

for every step...

[winkworth.co.uk](http://winkworth.co.uk)



## DESCRIPTION:

Located on the sought-after Ashlone Road this beautifully presented three-bedroom, two-bathroom terraced house offers an exceptional lifestyle just moments from the River Thames. With an impressive internal area of approximately 1,335 sq. ft, this home combines elegant proportions with flexible living spaces across three floors.

Please note, this property has had a long-term tenant. As a result, a brief period has been scheduled between tenancies to allow for a refresh and garden maintenance, ensuring it is presented in its best condition for the next tenancy.

The ground floor is thoughtfully arranged to accommodate either dual reception areas or a reception room and dining area at the front, with a spacious kitchen at the rear—both perfect for entertaining. The kitchen opens out onto a sunny private garden, ideal for outdoor dining or quiet relaxation.

Upstairs, the first floor offers two well-proportioned double bedrooms and a family bathroom. The top floor is dedicated to a generous principal suite with its own ensuite bathroom and access to eaves storage.

This charming home is superbly located in a tranquil residential enclave just a short stroll from the River Thames and the green open spaces of Leaders Gardens and Putney Embankment. Excellent transport links are nearby, including Putney Bridge Underground Station and Putney mainline station, providing swift connections into Central London.

With its riverside charm and versatile layout this property is perfect for families and professionals seeking a balance of city living and outdoor lifestyle.



**Winkworth**

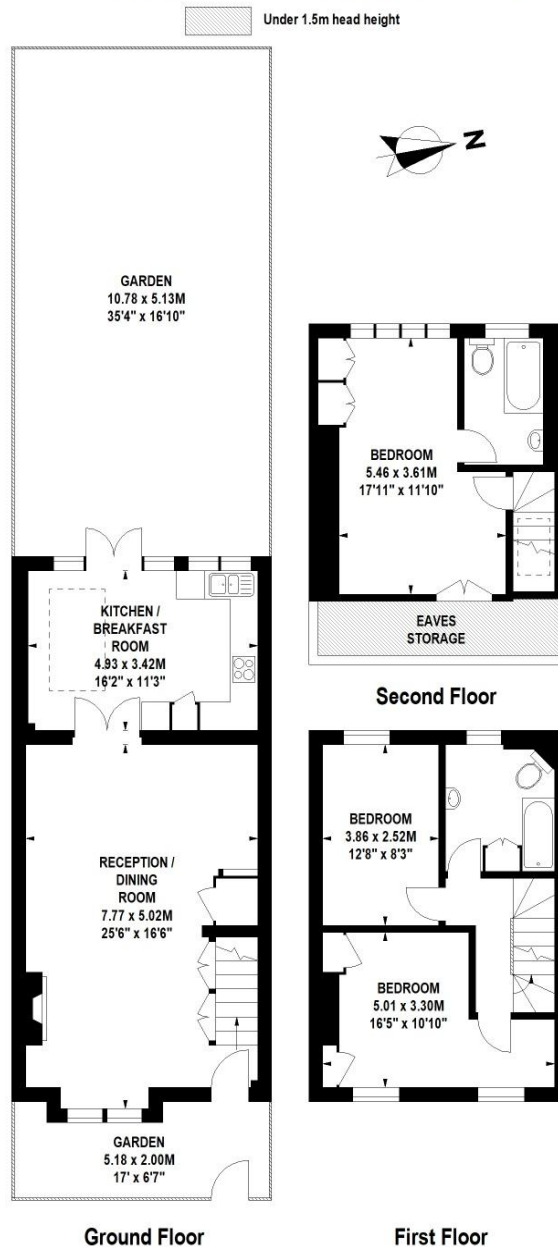
for every step...

[winkworth.co.uk](http://winkworth.co.uk)

Winkworth wishes to inform prospective buyers and tenants that these particulars are a guide and act as information only. All our details are given in good faith and believed to be correct at the time of printing but they don't form part of an offer or contract. No Winkworth employee has authority to make or give any representation or warranty in relation to this property. All fixtures and fittings, whether fitted or not are deemed removable by the vendor unless stated otherwise and room sizes are measured between internal wall surfaces, including furnishings.

## Ashlone Road, SW15

Approximate Gross Internal Area 124 sq.m / 1335 sq. ft  
Including Eaves Storage of Approximately 6 sq m / 65 sq ft



Floor Plan produced for WINKWORTH by Mays Floorplans © . Tel 020 3397 4594  
Illustration for identification purposes only, not to scale  
All measurements are maximum, and include wardrobes and window bays where applicable

This floorplan is for illustration purposes only and is not to scale. The position and size of doors, windows, appliances and other features are approximate.

**Deposit:** 5 weeks' rent

**Holding Deposit:** 1 week's rent

**Council Tax Band:** Wandsworth

Where no figures are shown, we have been unable to ascertain the information.  
All figures that are shown were correct at the time of printing.

Putney | 020 8877 1000 | [putney@winkworth.co.uk](mailto:putney@winkworth.co.uk)

**Winkworth**

for every step...

[winkworth.co.uk](http://winkworth.co.uk)