



ROEBUCK HOUSE, ROEHAMPTON LANE, LONDON, SW15
£2,500 PER MONTH FURNISHED

An immaculately presented two double bedroom apartment with two bathrooms, located on the second floor of this modern development

Putney | 020 8877 1000 | putney@winkworth.co.uk

Winkworth

for every step...

winkworth.co.uk



DESCRIPTION:

The property benefits from secure underground parking and a lift. The property is finished to a high standard and comprises a bright reception room opening onto a spacious balcony, a fantastic open plan kitchen with integrated appliances, the principal bedroom offers built in wardrobes and an ensuite shower room, further double bedroom with built in wardrobes, family bathroom with over bath shower and storage cupboard in the hall way. Roebuck House is set within a smart development that enjoys a superb location in South West London, set within easy reach of cosmopolitan Putney, Wimbledon Common, Barnes Station and beautiful Richmond Park. There are plenty of bus links towards Hammersmith and the West End and also towards Kingston and Wimbledon. Barnes station is 0.7 miles away.



Winkworth

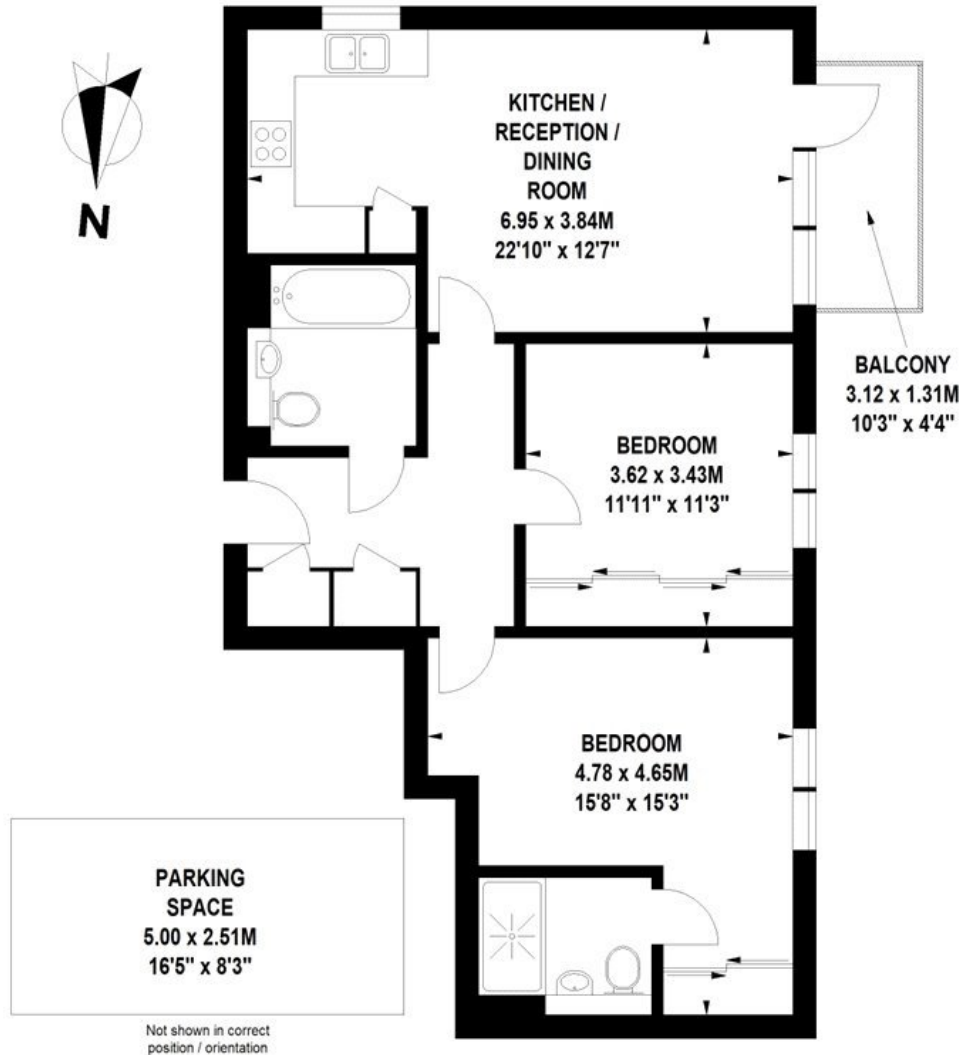
for every step...



Winkworth
for every step...

Roebuck House, Roehampton Lane, SW15

Approximate Gross Internal Area 74 sq.m / 797 sq. ft



Second Floor

Floor Plan produced for WINKWORTH by Mays Floorplans © . Tel 020 3397 4594

Illustration for identification purposes only, not to scale

All measurements are maximum, and include wardrobes and window bays where applicable

This floorplan is for illustration purposes only and is not to scale. The position and size of doors, windows, appliances and other features are approximate.

Deposit: 5 weeks' rent

Holding Deposit: 1 week's rent

Council Tax Band: Wandsworth – Band E

Where no figures are shown, we have been unable to ascertain the information. All figures that are shown were correct at the time of printing.

Putney | 020 8877 1000 | putney@winkworth.co.uk

Winkworth

for every step...

winkworth.co.uk

Winkworth wishes to inform prospective buyers and tenants that these particulars are a guide and act as information only. All our details are given in good faith and believed to be correct at the time of printing but they don't form part of an offer or contract. No Winkworth employee has authority to make or give any representation or warranty in relation to this property. All fixtures and fittings, whether fitted or not are deemed removable by the vendor unless stated otherwise and room sizes are measured between internal wall surfaces, including furnishings.