



20 Portersbridge Street, Romsey SO51 8DJ

Winkworth



PERIOD PROPERTY IN SUPERB LOCATION

We are delighted to offer this three-bedroom period property in a prized location close to the heart of Romsey Town, located within a few minutes' walk of its extensive amenities. Local Facilities include a range of individual shops, schools, leisure facilities, doctors and dentist surgeries and public transport by way of bus and rail services. The M27 can be accessed at junction 3, about 3 ½ miles distant. The major centres of Salisbury, Southampton, Winchester and Portsmouth are all easily accessed.

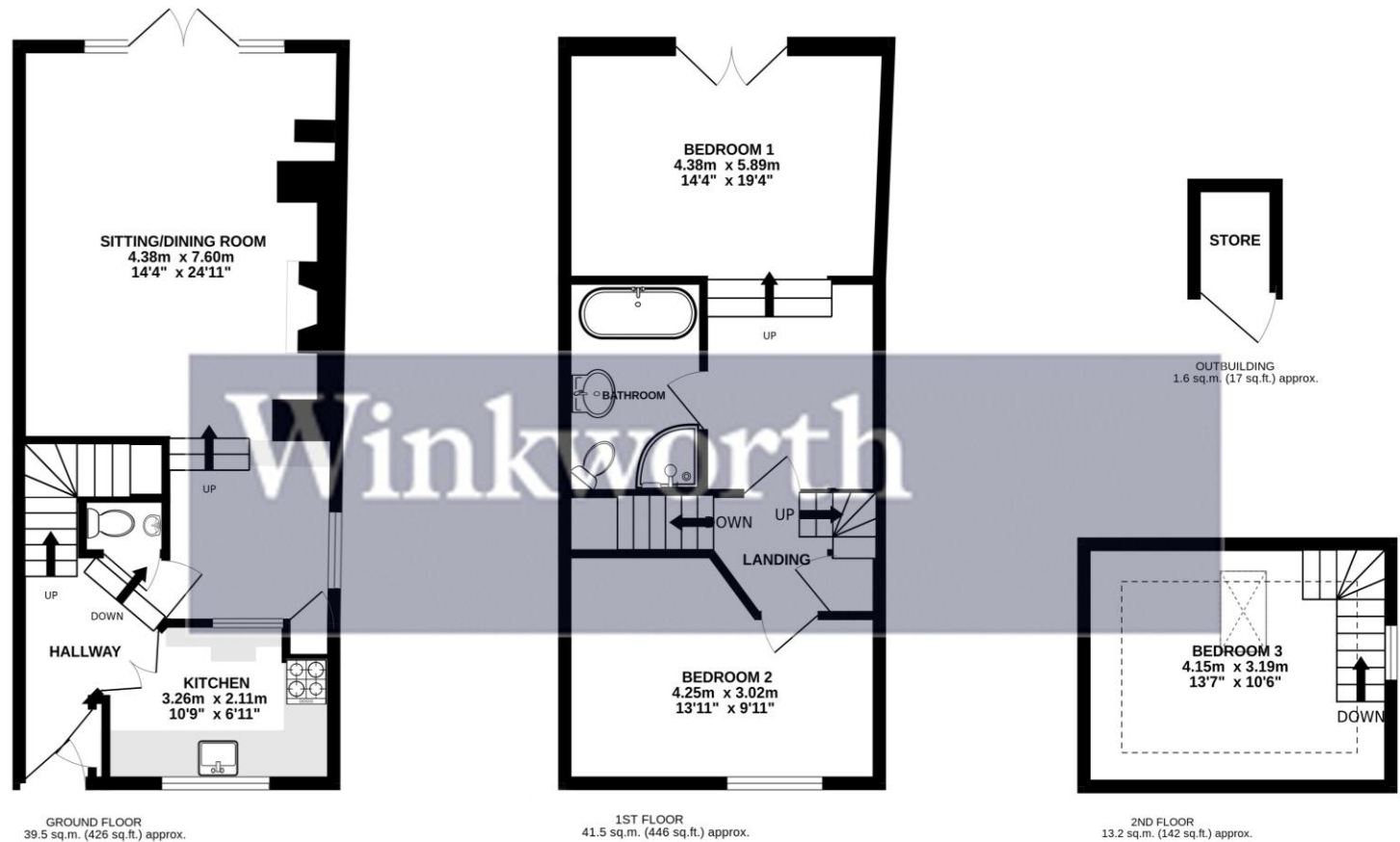
This beautifully presented three-bedroom period property is in the heart of Romsey Town Centre. The property itself is full of charm and has many beautiful features throughout. The accommodation comprises an entrance hallway leading to all principal ground floor rooms. The modern kitchen has many eye and base level units with a serving hatch opening to the dining room. The dining room leads through to the sitting room which overlooks the rear elevation and features a lovely inglenook fireplace and double doors onto to the garden. To the first floor are two generous bedrooms with the primary bedroom having a dressing area and bathroom with separate bath and shower. To the second floor is an attic room with Velux window that is currently set up as a third bedroom but could also be utilized as a home office/study.

The garden has been a true labour of love for the current owners and for a garden so close to central Romsey, it is incredibly private. The low maintenance garden features a patio area, perfect for al-fresco dining, and benefits from an artificial lawn, so very easy to maintain, there is also a garden store room.



Winkworth

**Address: 20 Portersbridge Street,
Romsey SO51 8DJ**
Freehold
Council tax band: D



TOTAL FLOOR AREA : 95.8 sq.m. (1031 sq.ft.) approx.

Produced by Ellis Belk Photography: This information has been prepared as guide only. The vendor and Estate Agents, make no warranties as its accuracy and all interested parties must rely on their own enquiries.
Made with Metropix ©2023

winkworth.co.uk/romsey

Winkworth Romsey

18 Market Place, Romsey, Hampshire, SO51 8NA
01794 511911 | romsey@winkworth.co.uk

winkworth.co.uk/romsey

Winkworth Winchester

2 Black Swan Buildings, Southgate Street,
Winchester, Hampshire, SO23 9DT
01962 866777 | winchester@winkworth.co.uk

Winkworth Mayfair & Country House Department

11 Berkeley Street, Mayfair, London, W1J 8DS
020 7871 0589 | countryhouse@winkworth.co.uk

Winkworth

See things differently