



ADMIRAL WALK, W9
£1,000,000 LEASEHOLD

Winkworth



ADMIRAL WALK, W9

Occupying the top two floors of an impressive modern development, this beautifully finished three-bedroom duplex penthouse combines generous proportions, contemporary style, and superb comfort in a highly desirable location. With two spacious private terraces enjoying open views, secure allocated underground parking, private gym membership, and exclusive canal-side gardens, it offers the very best of modern London living.

The apartment features an inviting entrance hall leading to a bright, expansive reception room with a defined dining area and direct access to both terraces—perfect for relaxed living or hosting guests. A separate, contemporary eat-in kitchen provides ample workspace and storage, ideal for home cooks and families.

Thoughtfully designed throughout, the property includes extensive built-in storage and access to a large loft space, enhancing both convenience and practicality.

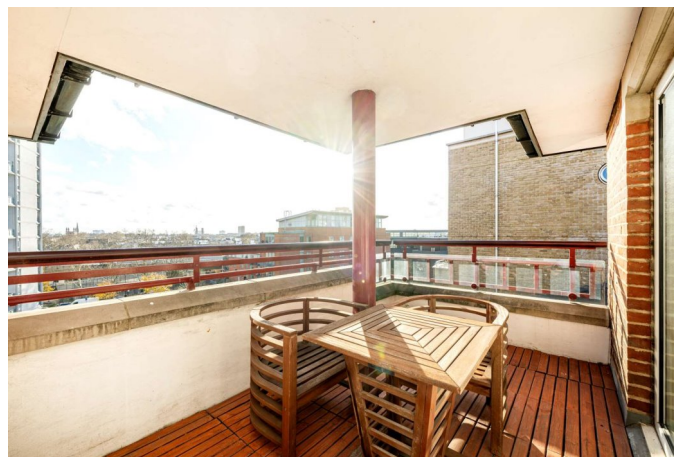
The main bedroom boasts an ensuite bathroom, complemented by two further well-proportioned bedrooms, a sleek shower room, and a stylish family bathroom. Dual-aspect living and large windows bathe the home in natural light throughout the day and offer far-reaching views stretching towards Kensington and Notting Hill.

Set moments from scenic canal towpaths with direct routes to Little Venice, Notting Hill, and Paddington, this penthouse is perfectly positioned for both leisurely strolls and effortless city connections.

Lease Length: 178 Years

Ground rent: N/A

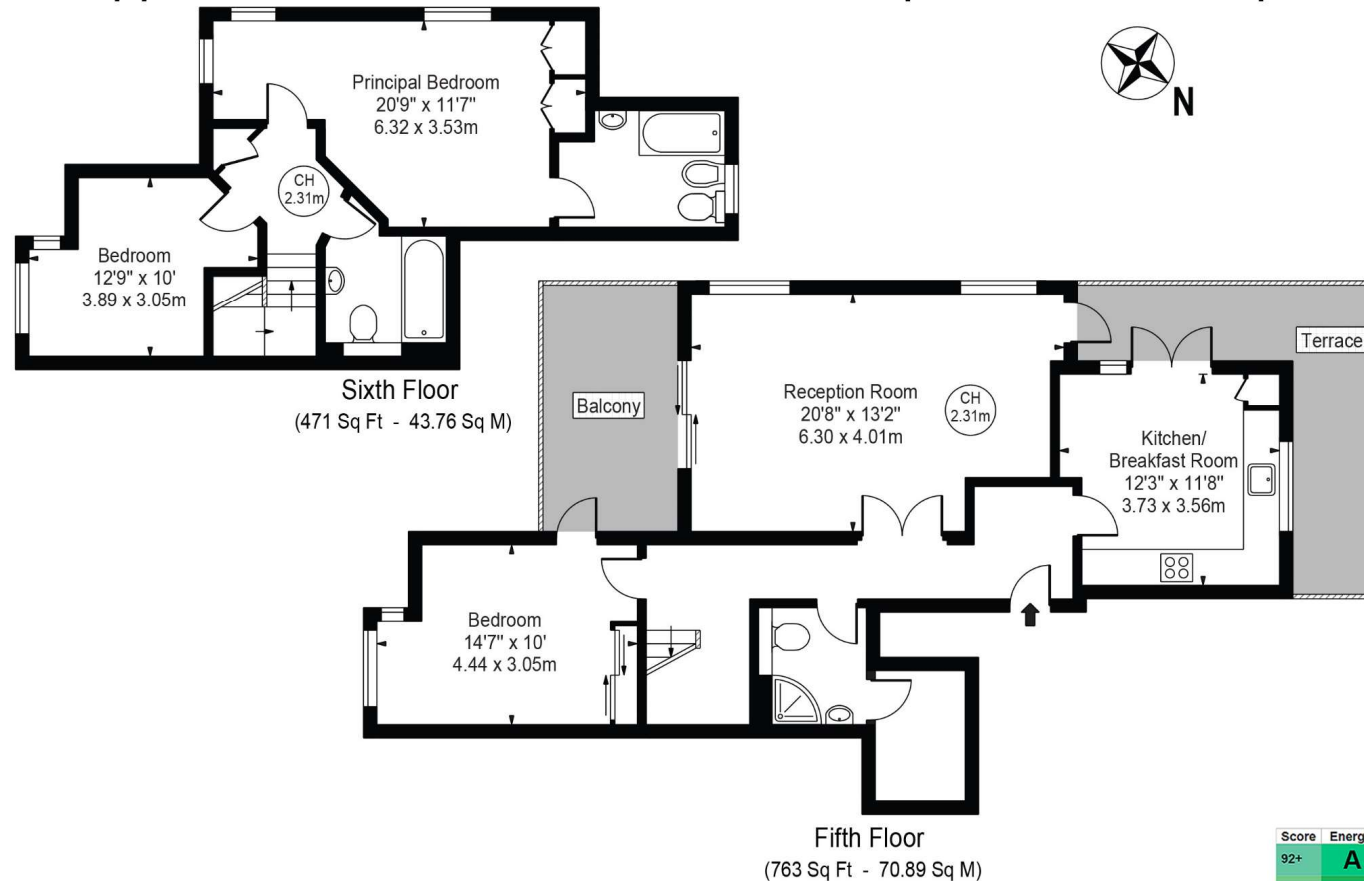
Service Charges: £10,828.00





Johnson Lodge

Approx. Gross Internal Area 1234 Sq Ft - 114.64 Sq M



For Illustration Purposes Only - Not To Scale

This floor plan should be used as a general outline for guidance only and does not constitute in whole or in part an offer or contract. Any intending purchaser or lessee should satisfy themselves by inspection, searches, enquiries and full survey as to the correctness of each statement. Any areas, measurements or distances quoted are approximate and should not be used to value a property or be the basis of any sale or let.

Copyright Morriarti Photography & Design LTD

Score	Energy rating	Current	Potential
92+	A		
81-91	B		
69-80	C	73 C	77 C
55-68	D		
39-54	E		
21-38	F		
1-20	G		

North Kensington | 020 7792 5000 | northkensington@winkworth.co.uk

winkworth.co.uk

Winkworth wishes to inform prospective buyers and tenants that these particulars are a guide and act as information only. All our details are given in good faith and believed to be correct at the time of printing but they don't form part of an offer or contract. No Winkworth employee has authority to make or give any representation or warranty in relation to this property. All fixtures and fittings, whether fitted or not are deemed removable by the vendor unless stated otherwise and room sizes are measured between internal wall surfaces, including furnishings.

Winkworth