



The Store, Nutburn Road, North Baddesley, SO52 9BG

Winkworth



BEAUTIFUL BARN CONVERSION

The ever popular North Baddesley is a quiet village located to the south east of Romsey. It benefits from fantastic local schooling and various local amenities making it ideal for families. The property is within easy reach of Romsey town centre with its variety of shops, banks and restaurants. Access to the M27 motorways is close at hand, which in turn provides access to Bournemouth, the New Forest and Southampton.

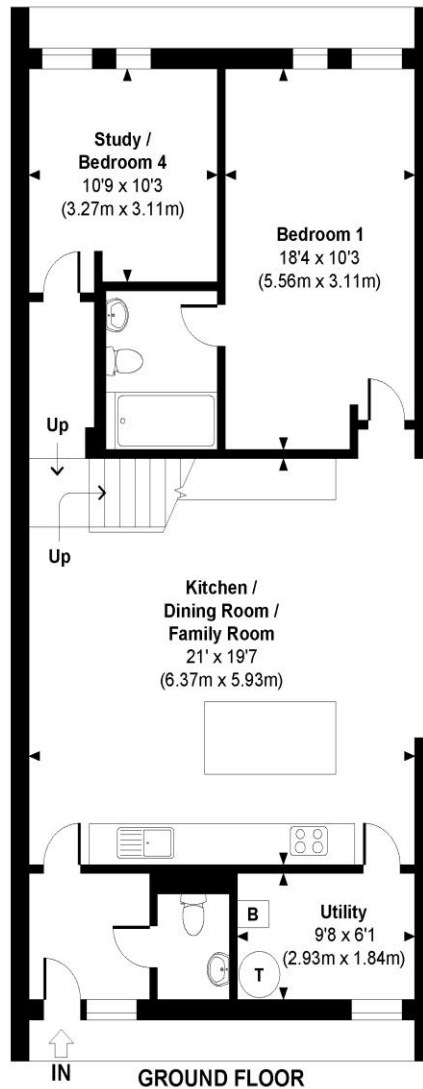
The Store is in a delightful rural setting and originates from 1929 when it was farmland, during the Second World War it is believed to have been a dance hall for the American G.I's and in more recent years a Scout Hut. Now converted to an architect designed, eco and sustainable stylish four-bedroom detached house. The Store comprises a stunning modern and spacious open plan living area with vaulted ceiling and fabulous views over neighbouring countryside. The primary bedroom with en-suite bathroom is located on the ground floor along with bedroom four/office. A useful utility room and cloak room completes the downstairs accommodation. An impressive galleried landing leads to two further bedrooms and a family wet room.

Outside the property is accessed via a private gravel driveway providing parking for numerous vehicles, the landscaped garden (approx. 0.15 acres) with sun terrace is South facing offering far reaching views over the adjoining farmland, a truly beautiful setting.



Winkworth

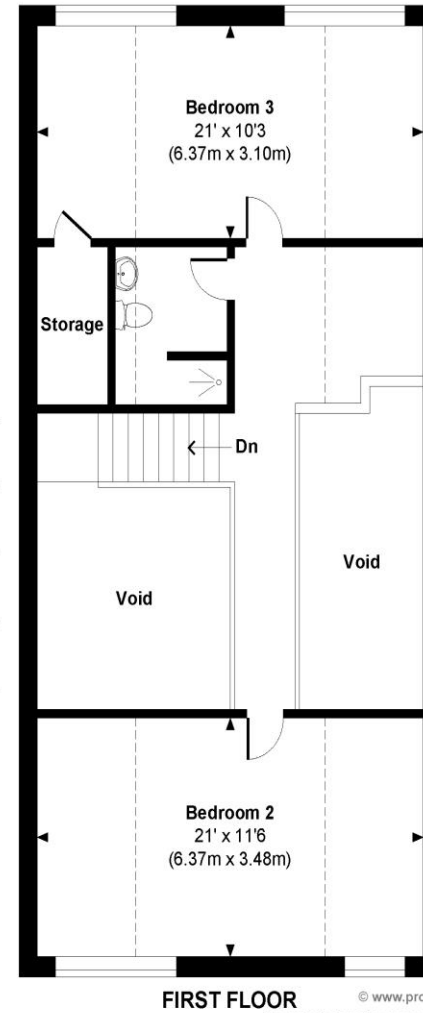
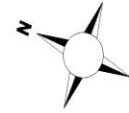
Address: The Store
Nutburn Road, North Baddesley
SO52 9BG
Price - £650,000



--- Indicates restricted room height less than 1.5m.

The Store Nutbeam Road

Approximate Gross Internal Area
Total = 1633 Sq Ft / 151.66 Sq M
Includes areas with Restricted room height but excludes void.



FIRST FLOOR

© www.propertyfocus.co | Professional Property Photography & Floorplans

This plan is for illustrative purposes only and is not to scale. If specified, the Gross Internal Area (GIA), dimensions, North point orientation and the size and placement of features are approximate and should not be relied on as a statement of fact. No guarantee is given for the GIA and no responsibility is taken for any error, omission or misrepresentation.



winkworth.co.uk/romsey

Winkworth Romsey

18 Market Place, Romsey, Hampshire, SO51 8NA
01794 511911 | romsey@winkworth.co.uk

winkworth.co.uk/romsey

Winkworth Winchester

2 Black Swan Buildings, Southgate Street,
Winchester, Hampshire, SO23 9DT
01962 866777 | winchester@winkworth.co.uk

Winkworth Mayfair & Country House Department

11 Berkeley Street, Mayfair, London, W1J 8DS
020 7871 0589 | countryhouse@winkworth.co.uk

Winkworth

See things differently