

STANMORE HILL, HA7
£460,000 SHARE OF FREEHOLD

EXCEPTIONAL DUPLEX APARTMENT FOR SALE

Harrow | 020 8861 3933 | harrow@winkworth.co.uk

Winkworth

for every step...

winkworth.co.uk



DESCRIPTION:

Winkworth Harrow are delighted to confirm the instruction on this exceptionally presented two bedroom duplex apartment in one of Stanmore's most sought after locations.

Situated on the first floor of a Grade II listed building, this duplex apartment comprises an entrance hallway leading on to a spacious south westerly facing lounge area, modern kitchen boasting integrated appliances and sleek fixtures and a fully fitted family bathroom.

To the second floor are two well appointed double bedrooms with fitted wardrobes.

Stanmore Hill is conveniently located in close proximity to Stanmore's shopping and transport facilities, with Stanmore underground Station only a stone's throw away. Schools, places of worship and various recreational facilities are well catered for in the local vicinity.

Further benefits include a private garden.


Book your viewing now to avoid disappointment.

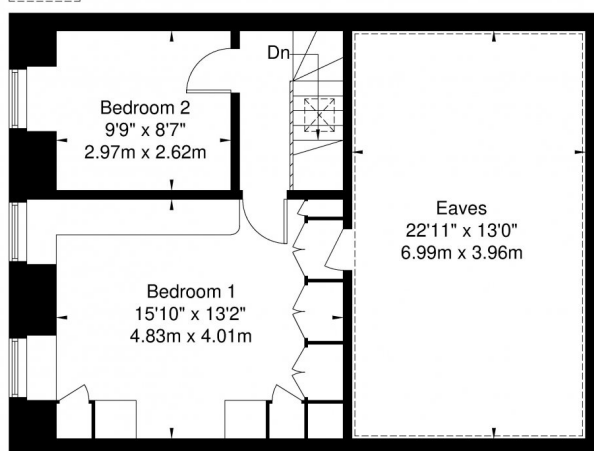




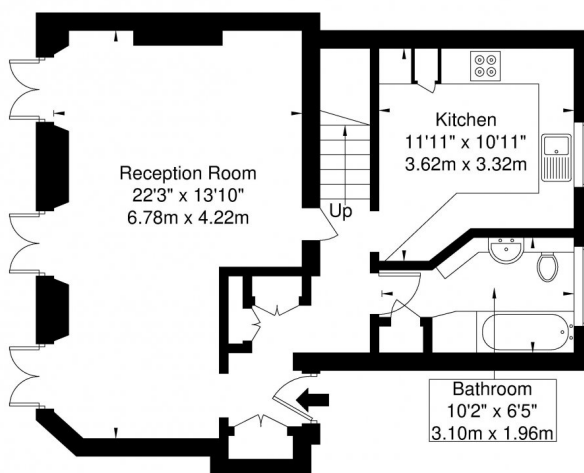
Stanmore Hill, Stanmore, HA7 3BN

Approx. Gross Internal Area = 115.7 sq m / 1245 sq ft
(Including Eaves)

 = Reduced headroom below 1.5m / 5'0"



Second Floor



First Floor

Ref

Copyright **BLEUPLAN**

The Floor plan is not to scale and measurements and areas shown are approximate and therefore should be used for illustrative purposes only. The plan has been prepared in accordance with the RICS code of Measuring Practice and whilst we have confidence in the information produced it must not be relied on. If there is any aspect of particular importance, you should carry out or commission your own inspection of the property.

Copyright @ BLEUPLAN

This floorplan is for illustration purposes only and is not to scale. The position and size of doors, windows, appliances and other features are approximate.

Harrow | 020 8861 3933 | harrow@winkworth.co.uk

Winkworth

for every step...

winkworth.co.uk

Winkworth wishes to inform prospective buyers and tenants that these particulars are a guide and act as information only. All our details are given in good faith and believed to be correct at the time of printing but they don't form part of an offer or contract. No Winkworth employee has authority to make or give any representation or warranty in relation to this property. All fixtures and fittings, whether fitted or not are deemed removable by the vendor unless stated otherwise and room sizes are measured between internal wall surfaces, including furnishings.