



BARNSBURY STREET, LONDON, N1
£500,000 SHARE OF FREEHOLD

A SIMPLY STUNNING ONE BEDROOM FLAT IN THE HEART OF ISINGTON

Islington | 0207 354 2480 | islington@winkworth.co.uk

Winkworth

winkworth.co.uk

See things differently



DESCRIPTION:

Set across the first floor of this charming Georgian terrace is this fantastic one bedroom apartment. The property is flooded with natural light and has been renovated to an exceptional standard throughout. Accommodation includes an open plan kitchen with high-end integrated appliances, a wonderful reception room, master bedroom, and a simply beautiful bathroom that has been meticulously designed. The finish in this property is of a high standard, from the solid oak parquet flooring throughout the flat to the ceramic Italian tiles in the bathroom. The property further benefits from high ceilings, large sash windows and has a share of the freehold.

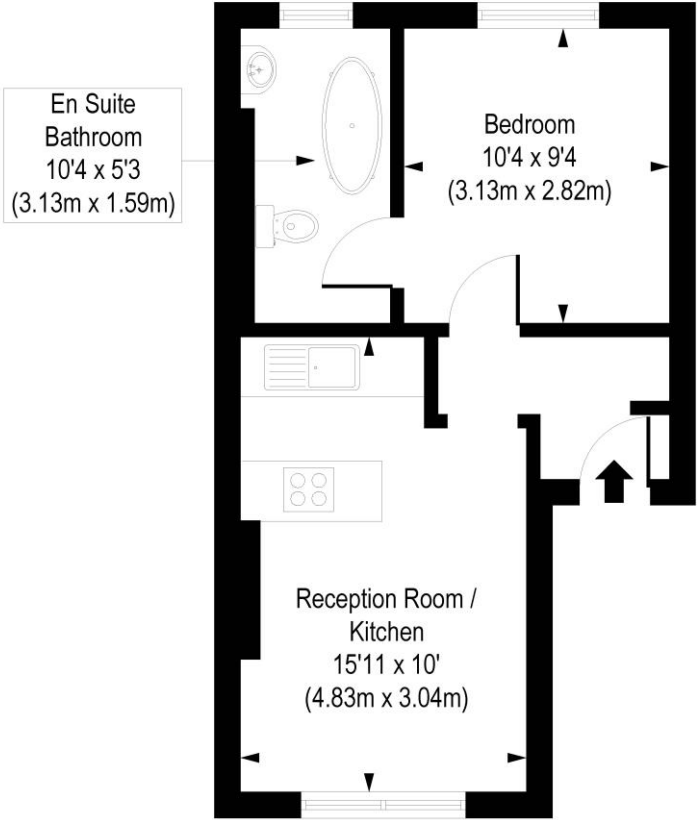
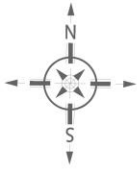
Barnsbury Street is perfectly positioned for the many shop's restaurants and bars on Upper Street and only a short distance away from the green spaces of Highbury Fields. Highbury and Islington offers the closest over ground and underground links whilst Drayton Park also provides easy access to Moorgate. Numerous bus routes are located on Holloway road an Upper street and international transport is facilitated from St Pancras.

Winkworth



Winkworth

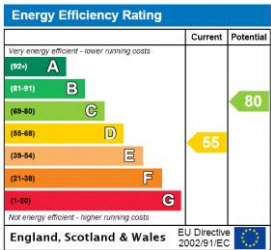
Barnsbury Street, N1
Approx. Gross Internal Floor Area 344 sq. ft / 31.94 sq. m



First Floor

COMPLIANT WITH RICS CODE OF MEASURING PRACTICE. Floorplan is for illustrative purposes only and is not to scale. Every attempt has been made to ensure the accuracy of the floorplan shown, however all measurements, fixtures, fittings and data shown are an approximate interpretation for illustrative purposes only. Liability for errors, omissions or mis-statement through negligence or otherwise is hereby excluded.

This floorplan is for illustration purposes only and is not to scale. The position and size of doors, windows, appliances and other features are approximate.



Islington | 0207 354 2480 | islington@winkworth.co.uk



winkworth.co.uk

See things differently

Winkworth wishes to inform prospective buyers and tenants that these particulars are a guide and act as information only. All our details are given in good faith and believed to be correct at the time of printing but they don't form part of an offer or contract. No Winkworth employee has authority to make or give any representation or warranty in relation to this property. All fixtures and fittings, whether fitted or not are deemed removable by the vendor unless stated otherwise and room sizes are measured between internal wall surfaces, including furnishings.