



BROADSTONE, DARTMOUTH  
£150,000

**A SUPERB GROUND FLOOR TOWN CENTRE  
APARTMENT WHICH IS ONE OF TWO  
APARTMENTS AVAILABLE.**

Dartmouth | 01803 832288 | [dartmouth@winkworth.co.uk](mailto:dartmouth@winkworth.co.uk)

**Winkworth**

for every step...

[winkworth.co.uk](http://winkworth.co.uk)

**SUMMARY: A SUPERB GROUND FLOOR TOWN CENTRE PREMISES WITH FANTASTIC POTENTIAL TO USE AS A HOLIDAY LET OR AST, AS ONE LARGER APARTMENT OR TWO OPEN PLAN APARTMENTS.**

**DIRECTIONS:** From the office turn right along Market Street and then right again into Broadstone and Zion Place will be found on the right hand side.

**DESCRIPTION:** These superb open plan apartments own the freehold of the building which has been very well maintained and has had a new roof in the last four years. They are particularly versatile and can be used as two separate apartments or as one flat. They could also be used as home and income or as a assured, short hold tenancy. They are situated on Zion place. On the level, just a stroll from all the town centre facilities and the River Dart. This really is a superb investment opportunity or indeed first home or a second home. The property has been modernised to include open plan living/bedroom with kitchen cabinets and bathrooms. One of the apartments has a mezzanine level. Early viewings are strongly recommended through the agent, but it should be noted that the properties are still being let so advance bookings are essential. Please see floor plans for layout and sizes.

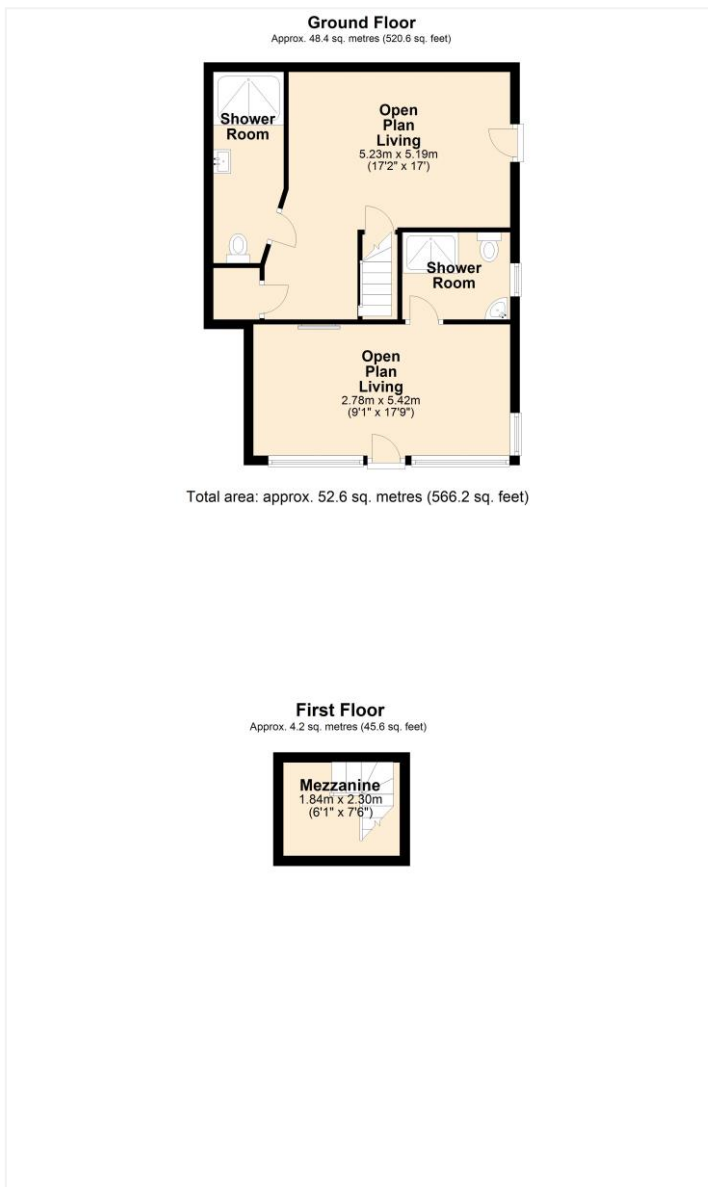
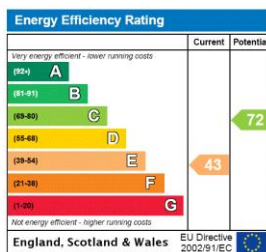
Dartmouth is an historic port with cottages stretching down to the water's edge. It is a world famous yachting centre with excellent facilities for the boating fraternity. It is considered to be one of the most beautiful estuary's in Europe and the town is now full of quality restaurants and bistros, tea rooms, boutiques etc. Dartmouth is also home to the Britannia Royal Naval College and there is a mainline railway station in Totnes. Exeter airport is within easy driving distance.

**COUNCIL TAX BAND: A**

**EPC RATING: E**

**POSTCODE: TQ6 9NR**

**SERVICES: Electricity and water are connected.**



This floorplan is for illustration purposes only and is not to scale. The position and size of doors, windows, appliances and other features are approximate.

Dartmouth | 01803 832288 | dartmouth@winkworth.co.uk



for every step...

winkworth.co.uk

Winkworth wishes to inform prospective buyers and tenants that these particulars are a guide and act as information only. All our details are given in good faith and believed to be correct at the time of printing but they don't form part of an offer or contract. No Winkworth employee has authority to make or give any representation or warranty in relation to this property. All fixtures and fittings, whether fitted or not are deemed removable by the vendor unless stated otherwise and room sizes are measured between internal wall surfaces, including furnishings.