



**FIRST FLOOR FLAT, DRAYCOTT AVENUE, LONDON, SW3  
£775 PER WEEK FURNISHED**

**A SPACIOUS AND CONTEMPORARY 2  
BEDROOM APARTMENT ON THE FIRST FLOOR  
OF A PURPOSE BUILT BUILDING.**

**Knightsbridge & Chelsea | 0207 589 6616 | [knightsbridge@winkworth.co.uk](mailto:knightsbridge@winkworth.co.uk)**

Tenant Fees Apply: Details of fees for tenant referencing, tenancy agreement admin fees and renewal fees are available on the Winkworth website and the link can be found with the displayed rent for the property. Tenants should ensure they are fully conversant with these upfront fees and other costs that are involved at the outset of the tenancy before making an offer to rent and your local Winkworth office will provide written details upon request.



## **DESCRIPTION:**

A spacious and contemporary 2 bedroom 2 bathroom apartment on the first floor of a purpose built building with a private Terrace.

Good size reception room with space for dining. Modern fully equipped kitchen with a breakfast bar.

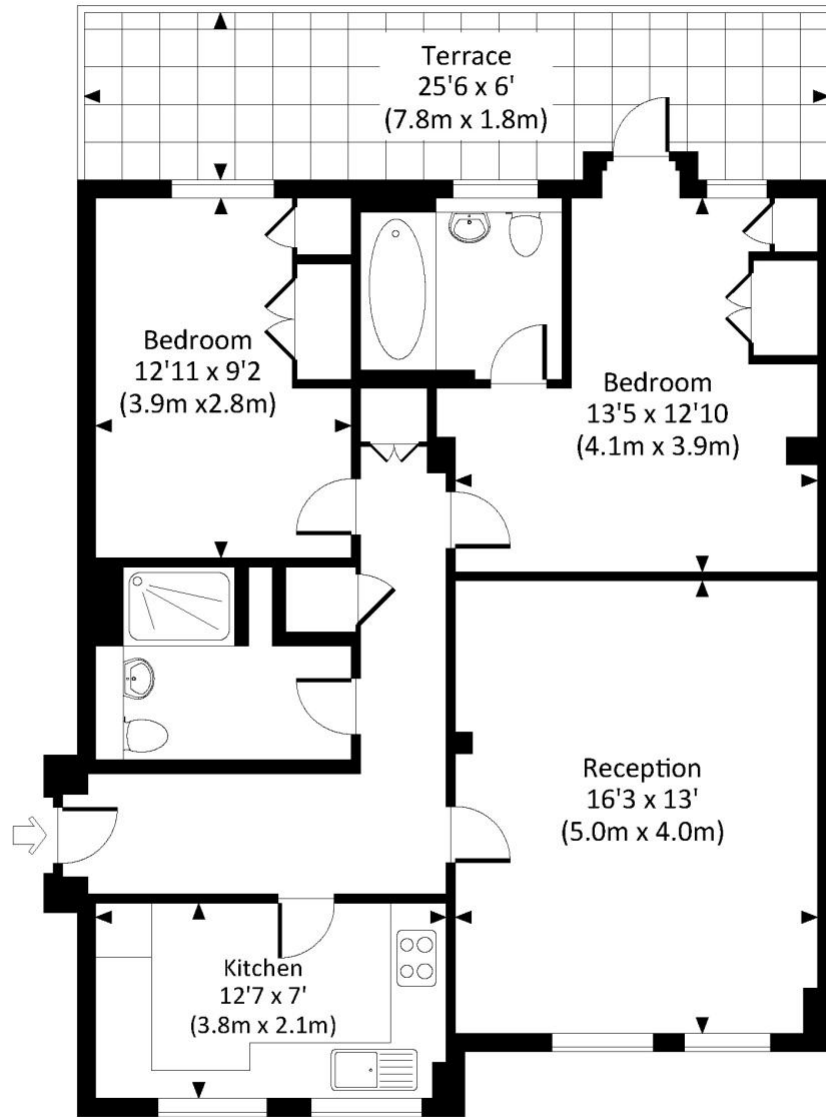
Master Bedroom with built in storage and an en suite bathroom. Further double bedroom and a guest shower room.

The property further benefits from a private terrace at the rear.



# DRAYCOTT AVENUE, SW3

Approx. gross internal area  
815 Sq.Ft. / 75.7 Sq.M.



FIRST FLOOR



All measurements have been made in accordance with RICS Code of Measuring Practice which are approximate only and only for illustrative purposes. For the avoidance of doubt, Dowling Jones Design shall not be liable for any reliance on these measurements. © 2016 www.dowlingjones.com 020 7610 9993

This floorplan is for illustration purposes only and is not to scale. The position and size of doors, windows, appliances and other features are approximate.

