

Boscombe Road, London, W12

£700,000 Share of Freehold

A beautifully presented three-bedroom, two-bathroom split level flat with a private terrace offering over 1100 sq ft of living space. Sold with no onward chain.

Reception Room | Kitchen | Dining Room | 3 Bedrooms | Shower Room | En Suite Bathroom | Terrace | 1172 Sq Ft / 109 Sq M | Council Tax Band E | EPC Rating Band D

Winkworth



LOCATION

Boscombe Road is a most popular street to the south of Uxbridge Road. Within easy reach of the area's diverse array of shops and restaurants, there are also several pubs and coffee shops close by. The outside spaces of both Wormholt and Ravenscourt Parks are just a short distance away, whilst superb transport links give easy access both in to and out of Central London.

DESCRIPTION

A beautifully presented split level flat offering over 1100 sq ft of living space.

The flat comprises a very bright and spacious reception room, separate kitchen with dining area, three double bedrooms and two bathrooms, one of which is an ensuite to the main bedroom.

The property benefits from private outside space, ample storage throughout and is sold with no onward chain.

Share of Freehold with an underlying lease of 958 years (999 years from 25 December 1984)

Service Charge: Ad Hoc

Ground Rent: N/A





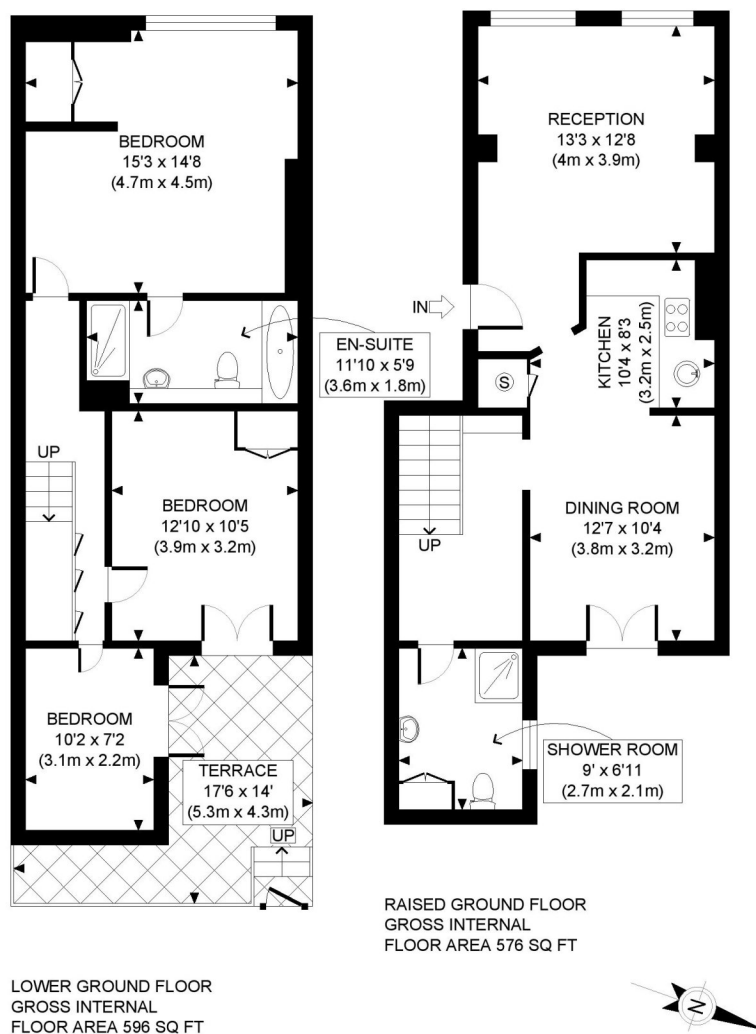
LOCAL AUTHORITY
Hammersmith & Fulham

TENURE
Share of Freehold 958 years 3 months.

PRICE: £700,000 Share of Freehold



Score	Energy rating	Current	Potential
92+	A		
81-91	B		
69-80	C		79 C
55-68	D	59 D	
39-54	E		
21-38	F		
1-20	G		



Winkworth

BOSCOMBE ROAD, W12

This plan is for illustrative purposes only and should be used as such by any prospective client. Whilst every attempt has been made to ensure the accuracy of the Floor Plan contained here, measurements of the doors, windows, rooms and any other items are approximate and no responsibility is taken for any errors, omissions, or misstatement. The services, systems and appliances shown have not been tested and no guarantee as to the operability or efficiency can be given.

PROPERTY PHOTO PLANS .CO.UK
ONE STOP SHOP FOR PROPERTY MARKETING

The displayed square footage is taken from the floor plans with measurements created using the Royal Institute of Chartered Surveyors' Code of Practice for Measuring. These measurements are approximate and included for illustrative purposes only. Winkworth does not make any representation as to the accuracy of these measurements and you should seek to verify them for yourself. Winkworth accept no liability for any loss you may suffer if you rely on these measurements.

Shepherds Bush | 020 8735 3266 | shepherdsbush@winkworth.co.uk

Winkworth

for every step...

Under the Property Misdescriptions Act 1991, these Particulars are a guide and act as information only. All details are given in good faith and are believed to be correct at time of printing. Winkworth give no representation as to their accuracy and potential purchasers or tenants must satisfy themselves by inspection or otherwise as to their correctness. No employee of Winkworth has authority to make or give any representation or warranty in relation to this property.