



Stratos Heights, London, SE19

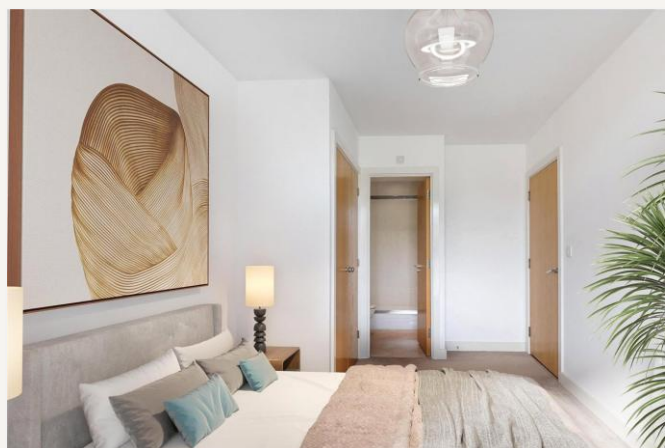
£475,000 *Leasehold*



Only seconds away from the popular Crystal Palace "Triangle", we are delighted to offer this modern, two-bedroom top floor flat.

KEY FEATURES

- 2 double bedrooms
- Open-plan living
- Abundance of natural lighting
- Lovely communal gardens
- Residents parking available
- Council Tax Band D



Crystal Palace

02038693222 | crystalpalace@winkworth.co.uk

Winkworth

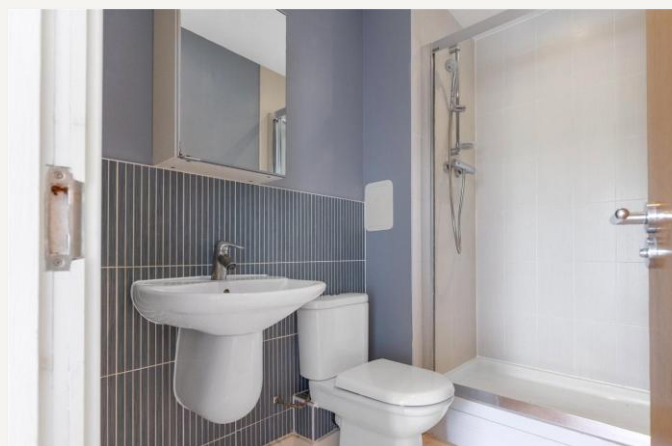
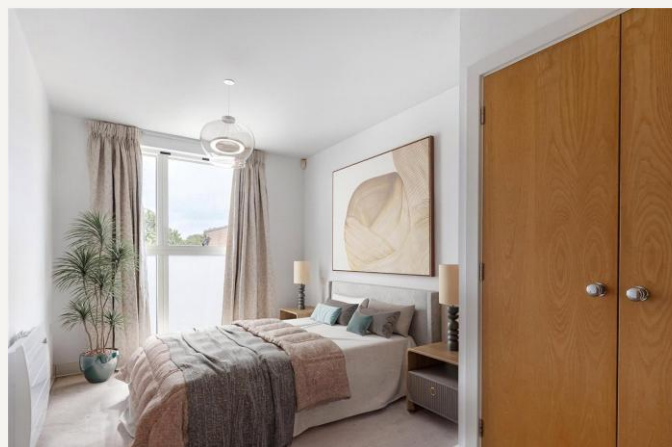
for every step...



The accommodation comprises; open plan kitchen/reception, two double bedrooms, and family bathroom. The flat's large windows makes for an abundance of light throughout the property, giving it a bright and airy feel. With generous space and storage options, it is the perfect home for first-time buyers and even growing families.

Externally there are very well-maintained communal gardens and private and gated off street parking. With the transport links of Crystal Palace and Gipsy Hill both within easy reach as well as Crystal Palace bus station, this is a commuters dream.

Some of these images have been CGI generated.





MATERIAL INFO

Tenure: Leasehold

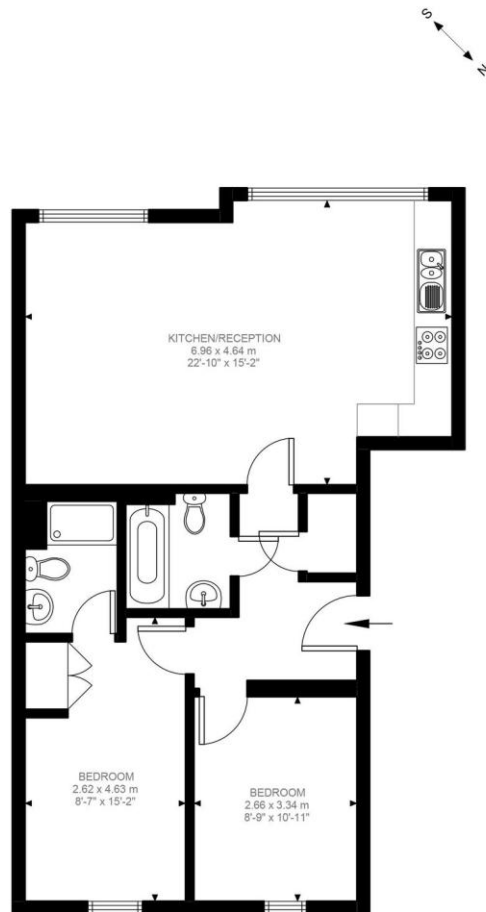
Term: 105 years and 7 months

Service Charge: £2348 per annum

Ground Rent: £430 Annually (subject to increase)

Council Tax Band: D

EPC rating: D



Third Floor
723 ft²

Milestone Road, SE19
Approximate Gross Internal Area
67.17 SQ.M / 723 SQ.FT

Illustration for identification purposes only. Not to scale.
Floor Plan Drawn According To RICS Guidelines.

Score	Energy rating	Current	Potential
92+	A		
81-91	B		
69-80	C		74 C
55-68	D	65 D	
39-54	E		
21-38	F		
1-20	G		

Where no figures are shown, we have been unable to ascertain the information. All figures that are shown were correct at the time of printing.

Crystal Palace

02038693222 | crystalpalace@winkworth.co.uk

Winkworth

for every step...

Winkworth wishes to inform prospective buyers and tenants that these particulars are a guide and act as information only. All our details are given in good faith and believed to be correct at the time of printing but they don't form part of an offer or contract. No Winkworth employee has authority to make or give any representation or warranty in relation to this property. All fixtures and fittings, whether fitted or not are deemed removable by the vendor unless stated otherwise and room sizes are measured between internal wall surfaces, including furnishings.