



HILLVIEW GARDENS, HENDON, LONDON, NW4  
**£685,000 FREEHOLD**

## THREE BEDROOM MID TERRACED HOUSE FOR SALE LOCATED IN THE HEART OF HENDON

Hendon | 020 8202 1031 | [hendon@winkworth.co.uk](mailto:hendon@winkworth.co.uk)

**Winkworth**

for every step...

[winkworth.co.uk](http://winkworth.co.uk)





## DESCRIPTION:

**\*\*\*FANTASTIC POTENTIAL\*\*\*** Three-bedroom end of terrace house for sale located in the heart of Hendon. Comprising double living room with bay window, galley kitchen with access to private garden. Two double bedrooms, smaller single bedroom and a family bathroom. The house has the potential for extension in the loft and at the rear (STPP) and is well located close to Brent Street and local transport links. Freehold. Chain Free.

## AT A GLANCE

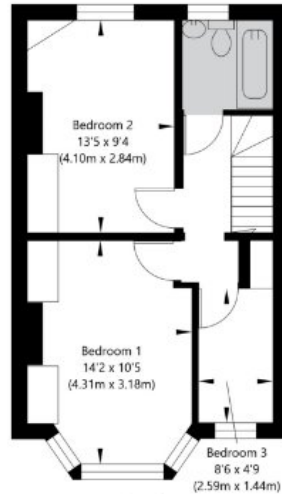
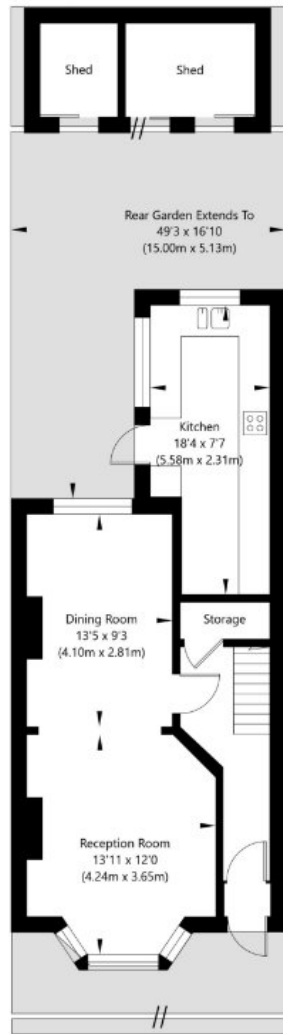
- THREE BEDROOM HOUSE FOR SALE
- END OF TERRACE
- LOTS OF POTENTIAL
- PRIVATE GARDEN
- CHAIN FREE
- FREEHOLD







Hillview Gardens, London NW4 2JH



First Floor  
GROSS INTERNAL FLOOR AREA  
APPROX. 38.52 SQ M / 415 SQ FT

Ground Floor  
GROSS INTERNAL FLOOR AREA  
APPROX. 47.09 SQ M / 507 SQ FT

APPROXIMATE GROSS INTERNAL FLOOR AREA 85.61 SQ M / 922 SQ FT  
THIS FLOOR PLAN IS FOR ILLUSTRATIVE PURPOSES ONLY AND  
SHOULD BE USED FOR THIS PURPOSE BY PROSPECTIVE APPLICANTS AS ITS NOT TO SCALE.

(c) AMBERSHORE PIX LIMITED / PHOTO - VIDEO - FLOOR PLANS / 0800 999 1577 / WWW.AMERSHOREPIX.CO.UK

This floorplan is for illustration purposes only and is not to scale. The position and size of doors, windows, appliances and other features are approximate.

Hendon | 020 8202 1031 | hendon@winkworth.co.uk



for every step...

winkworth.co.uk

Winkworth wishes to inform prospective buyers and tenants that these particulars are a guide and act as information only. All our details are given in good faith and believed to be correct at the time of printing but they don't form part of an offer or contract. No Winkworth employee has authority to make or give any representation or warranty in relation to this property. All fixtures and fittings, whether fitted or not are deemed removable by the vendor unless stated otherwise and room sizes are measured between internal wall surfaces, including furnishings.