

WEST HILL, SW15

£2,750 PER MONTH UNFURNISHED

An incredibly bright and spacious two bedroom, two bathroom apartment in an iconic converted school in East Putney

Putney | 020 8877 1000 | putney@winkworth.co.uk

Winkworth

for every step...

[winkworth.co.uk](https://www.winkworth.co.uk)



DESCRIPTION:

Situated on the second floor (with lift) the property extends to nearly 900 sq. ft. With ceiling heights of over 3.5 metres and huge windows the flat benefits from an abundance of natural light.

A generous entrance hall greets you, with multiple useful built-in cupboards. The master bedroom is an excellent size, features built-in wardrobes and has a modern ensuite shower room. The second bedroom is also a good double and is serviced by a luxurious family bathroom.

The vast reception is over 20 ft across and includes three beautiful sash windows with far reaching views. There is wood flooring throughout and plenty of space for both living and dining. The kitchen is adjacent, with fitted appliances and plenty of worktops and storage.

The property further benefits from immaculate communal gardens and allocated off street parking and bike storage.

Mayfield Mansions is set back on West Hill and is accessed via a private residents-only road and separate footpath giving easy access to the Upper Richmond Road. It is a short walk from East Putney underground station and both Putney train station. It also benefits from fantastic bus links and easy access to the shops and leisure facilities of both Putney High Street and Wandsworth Southside.

ACCOMMODATION

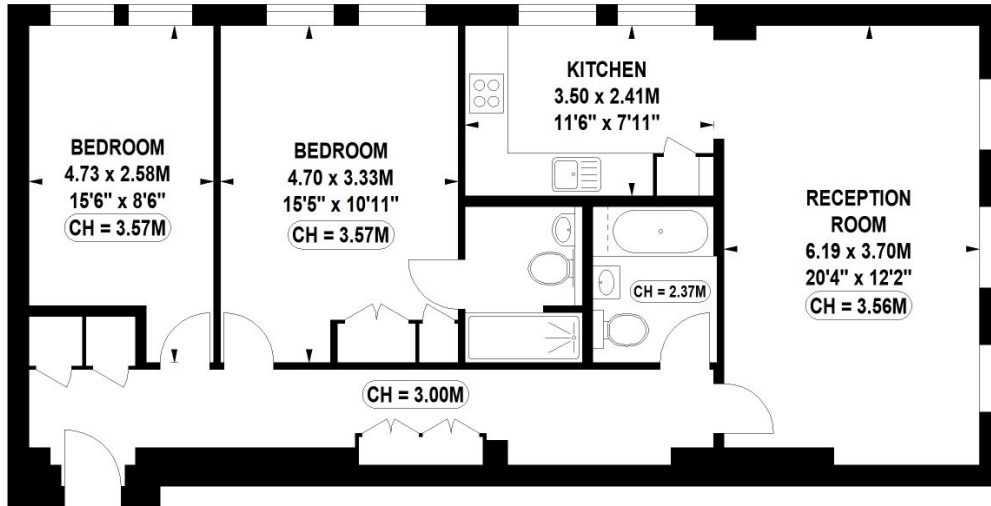
Long Let, 2 Bedrooms, 1 Reception Room, 2 Bathrooms, Flat/Apartment, Upper Floor with Lift, Communal Gardens, Off Street Parking, Period, Town/City, Unfurnished, 893 Approx Sq Ft



Mayfield Mansions, West Hill, SW15

Approximate Gross Internal Area 83 sq.m / 893 sq. ft

CH = Ceiling Height



Second Floor

Floor Plan produced for WINKWORTH by Mays Floorplans © . Tel 020 3397 4594

Illustration for identification purposes only, not to scale

All measurements are maximum, and include wardrobes and window bays where applicable

This floorplan is for illustration purposes only and is not to scale. The position and size of doors, windows, appliances and other features are approximate.

Deposit: 5 weeks' rent

Holding Deposit: 1 week's rent

Council Tax Band: Wandsworth

Where no figures are shown, we have been unable to ascertain the information. All figures that are shown were correct at the time of printing.

Putney | 020 8877 1000 | putney@winkworth.co.uk

Winkworth

for every step...

winkworth.co.uk

Winkworth wishes to inform prospective buyers and tenants that these particulars are a guide and act as information only. All our details are given in good faith and believed to be correct at the time of printing but they don't form part of an offer or contract. No Winkworth employee has authority to make or give any representation or warranty in relation to this property. All fixtures and fittings, whether fitted or not are deemed removable by the vendor unless stated otherwise and room sizes are measured between internal wall surfaces, including furnishings.