

Aldebert Terrace, Stockwell, London, SW8

£365,000 Share of Freehold

Winkworth are proud to present this charming and extremely spacious studio apartment on a quiet residential street, just a short walk from Stockwell underground station.

Winkworth

LOCATION

Aldebert Terrace is located just off South Lambeth Road. Close to Albert Square and just a short walk to Vauxhall and Stockwell station.

DESCRIPTION

As you enter the property on the first floor you are greeted by an extremely bright and spacious reception room with space for a sofa bed, coffee table and additional storage. This room benefits from high ceilings, two large sash windows, and built-in shelving.

Heading towards the back of the flat is a dining room with space for a large dining table and chairs. This space also benefits from built-in storage and space for additional storage.

At the back of the property is a great-sized kitchen with ample storage and worktop space, as well as an integrated gas hob with extractor fan above and an oven below. There is also space for a washing machine and fridge.

To the left of the kitchen are steps leading down to a good size bathroom comprising a bath, sink with mirror above, W.C., and heated towel rail.

LOCAL AUTHORITY

Lambeth

TENURE

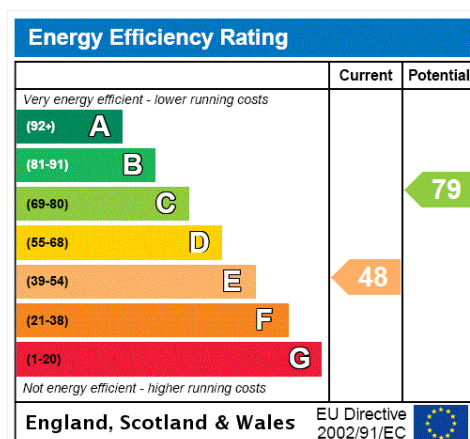
Share of Freehold - 995 years

Service Charge - £0.00

Ground Rent - £0.00

DIRECTIONS

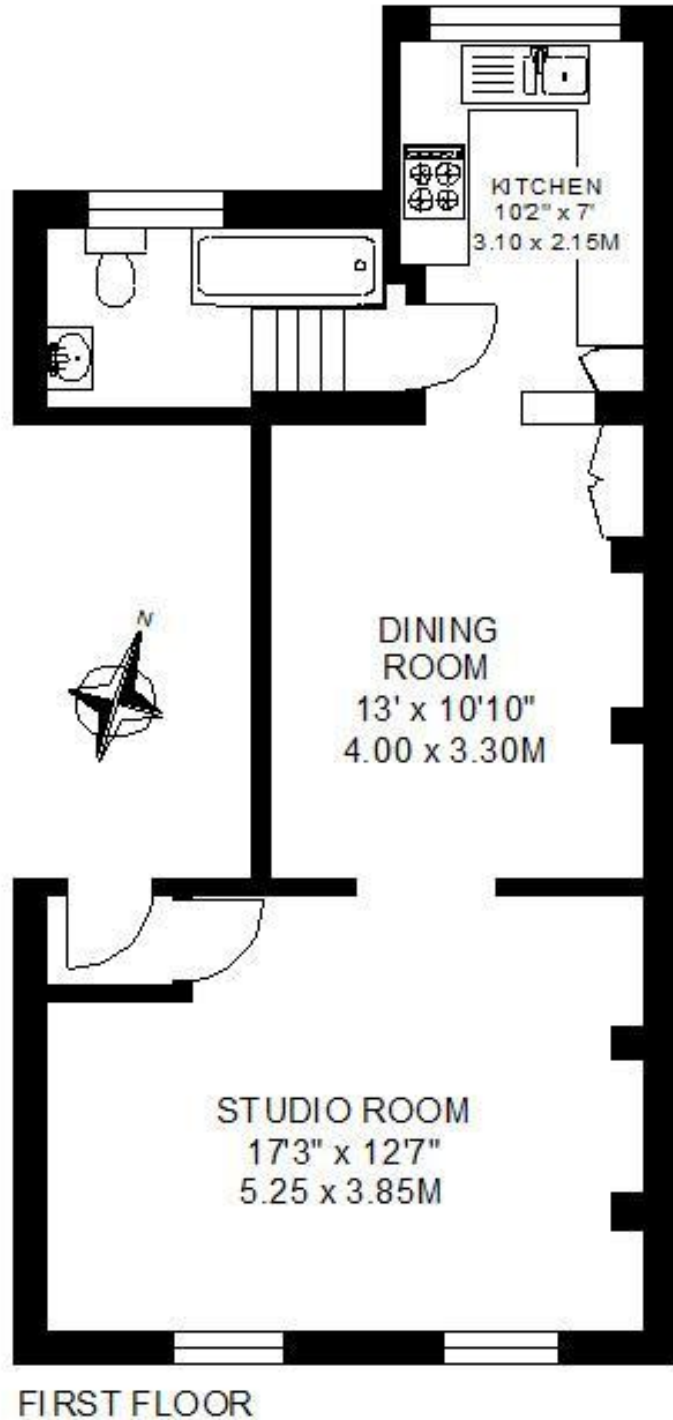
Vauxhall Station (Victoria & South West Trains) approximately 0.8 miles. Stockwell Station is approximately 0.4 miles away. South Lambeth Road has a frequent bus service to the City and West End.





APPROXIMATE INTERNAL FLOOR AREA

498 SQ.FT / 46.2 SQ.M.



This floorplan is for illustration purposes only and is not to scale. The position and size of doors, windows, appliances and other features are approximate.

Kennington | 020 7587 0600 | kennington@winkworth.co.uk