



IVYDALE ROAD, PECKHAM RYE, SE15  
£1,100,000 FREEHOLD

A REMARKABLE THREE DOUBLE-BEDROOM  
VICTORIAN HOME SITUATED IN A HIGHLY  
SOUGHT AFTER LOCATION IN NUNHEAD.

Dulwich | 020 8299 2722 | [dulwich@winkworth.co.uk](mailto:dulwich@winkworth.co.uk)

**Winkworth**

[winkworth.co.uk](http://winkworth.co.uk)

See things differently





## DESCRIPTION:

A truly remarkable Victorian home, situated in a highly sought after location in Nunhead. Tastefully and beautifully finished, this family home is offered to the market in fantastic condition. Comprising a spacious reception, complete with original fireplace, high ceilings and bespoke joinery. A spacious second reception leads through to a fully extended kitchen diner, finished to an impressive, high standard. The kitchen boasts engineered wood flooring, built in appliances, range cooker and tonnes of storage. The ground floor further boasts a small cellar and downstairs WC. The first floor comprises three spacious double bedrooms and two family bathrooms, all bedrooms boast original features and sash windows. There is potential to extend further in to the loft STPP, making a very large five double bedroom family home. Located within easy reach of the open green spaces of Peckham Rye Park and local amenities. In addition, access to transport links including Peckham Rye, Honor Oak and Nunhead stations are within easy walking distance with connections to Central London, The City, Canary Wharf and beyond. This is a fantastic family house in a superb location with early viewing recommended.

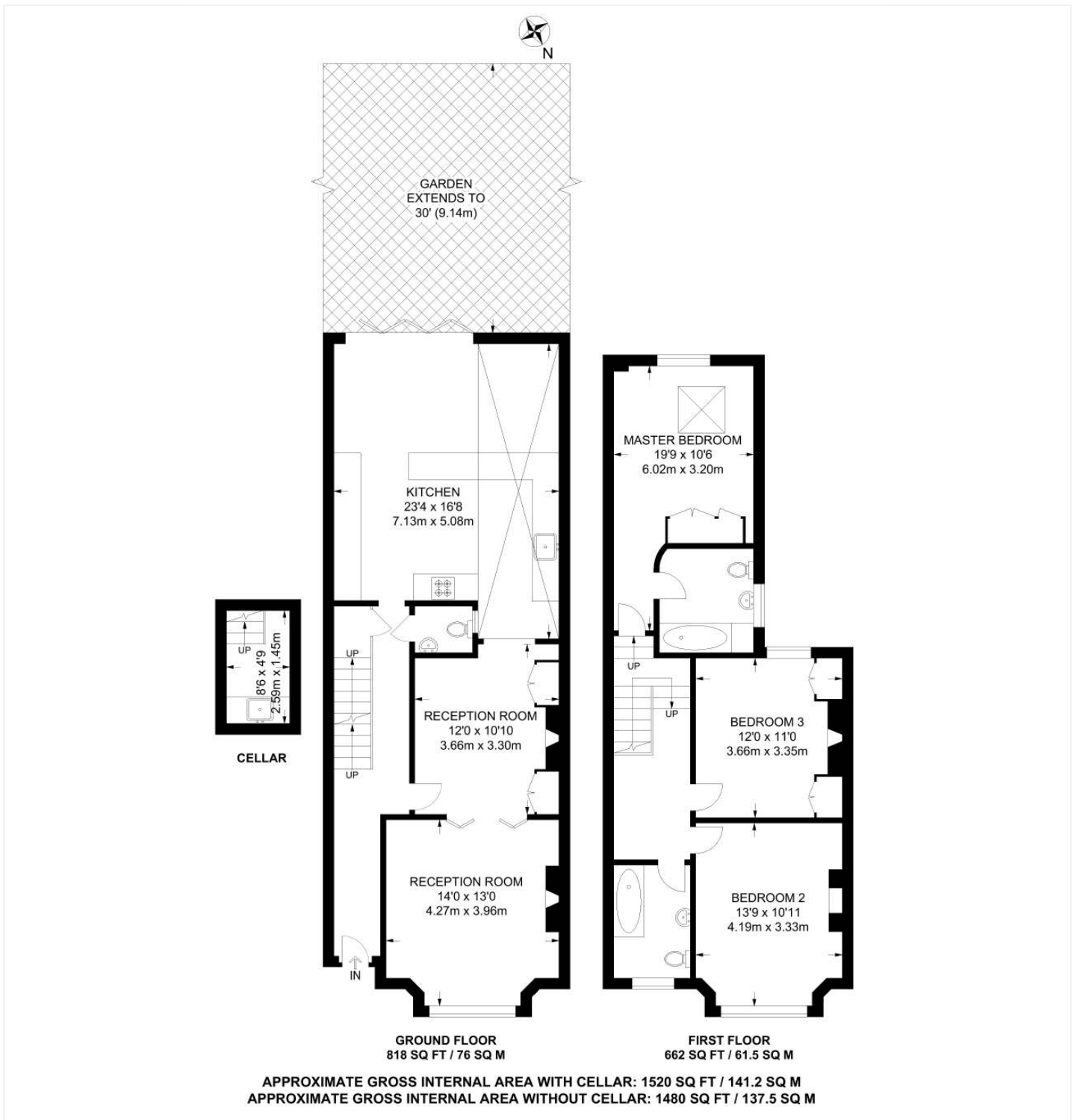
## AT A GLANCE

- Three Double Bedrooms
- Victorian Terraced House
- Two Receptions
- Extended Kitchen-Diner
- Two Bathrooms & Downstairs Cloakroom
- Cellar
- Potential To Extend Into The Loft STPP
- Close To Peckham Rye Park

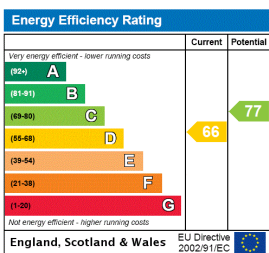








This floorplan is for illustration purposes only and is not to scale. The position and size of doors, windows, appliances and other features are approximate.



Dulwich | 020 8299 2722 | dulwich@winkworth.co.uk



winkworth.co.uk

See things differently

Winkworth wishes to inform prospective buyers and tenants that these particulars are a guide and act as information only. All our details are given in good faith and believed to be correct at the time of printing but they don't form part of an offer or contract. No Winkworth employee has authority to make or give any representation or warranty in relation to this property. All fixtures and fittings, whether fitted or not are deemed removable by the vendor unless stated otherwise and room sizes are measured between internal wall surfaces, including furnishings.