



## DENBIGH STREET, SW1V

£515,000

SHARE OF FREEHOLD

### At a glance...

- Double Bedroom
- Second Floor
- Excellent Condition
- Smart Modern Kitchen
- Bright Throughout
- Council Tax Band: D

**Winkworth**

for every step...



Score	Energy rating	Current	Potential
92+	A		
81-91	B		
69-80	C	72 C	79 C
55-68	D		
39-54	E		
21-38	F		
1-20	G		

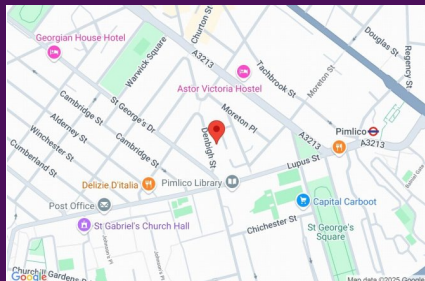
## DENBIGH STREET, SW1V

£515,000

SHARE OF FREEHOLD

A lovely one double bedroom flat on the 2nd floor of this handsome early-Victorian Pimlico townhouse, located on a quiet section of Denbigh Street.

Presented in excellent condition and wonderfully bright throughout the flat has been well maintained by the current owner and would make a lovely 1st time buy, London pied-a-terre or rental investment.

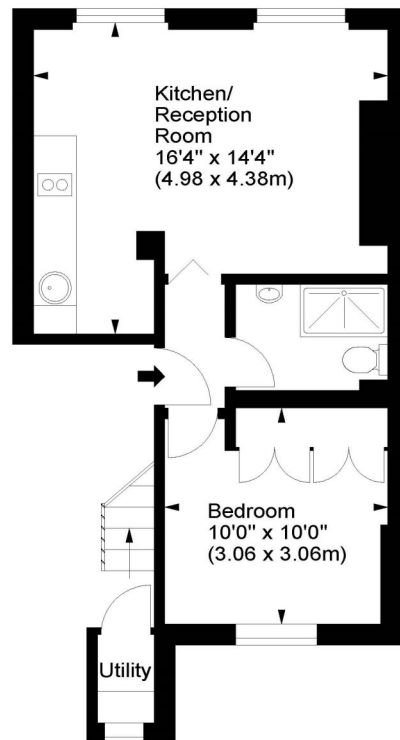


winkworth wishes to inform prospective buyers and tenants that these particulars are a guide and act as information only. All our details are given in good faith and believed to be correct at the time of printing but they don't form part of an offer or contract. No winkworth employee has authority to make or give any representation or warranty in relation to this property. All fixtures and fittings, whether fitted or not are deemed removable by the vendor unless stated otherwise and room sizes are measured between internal wall surfaces - including fire-chimneys.

## Denbigh Street, SW1



Approx. Gross Internal Area  
390 Sq Ft - 36.23 Sq M  
Approx. Utility Area  
11 Sq Ft - 1.02 Sq M  
Approx. Total Area  
401 Sq Ft - 37.25 Sq M



Second Floor

For illustration purposes only. Not to scale.  
All measurements are taken and shown at floor level.  
www.r3photography.co.uk © Photography / Floor Plans / Lease Plans / EPCs



Pimlico & Westminster

020 7828 1786

pimlico@winkworth.co.uk

winkworth.co.uk/pimlico-westminster

**Winkworth**

for every step...