



SUTHERLAND PLACE, W2

£1,250 PER WEEK (£5,416.66 PCM) Unfurnished

A BEAUTIFULLY DESIGNED AND PRESENTED TWO DOUBLE BEDROOM MAISONETTE OVER THE TOP TWO FLOORS OF THIS PRETTY PERIOD BUILDING WITH A PRIVATE ROOF TERRACE LOCATED ON THIS QUIET AND VERY POPULAR TREE LINED STREET IN THE HEART OF NOTTING HILL.

Long Let, 2 Bedrooms, 1 Reception Room, 2 Bathrooms, Maisonette, Upper Floor without Lift, Roof Terrace, Unfurnished, 886 Approx Sq Ft

Winkworth

Notting Hill | 0207 727 3227 | nottinghill@winkworth.co.uk

winkworth.co.uk

for every step...



DESCRIPTION:

The property was totally refurbished throughout to the highest of standards a few years ago and comprises fantastic open plan living room and fully fitted kitchen with wooden floors throughout, French door out to pretty private roof terrace with fantastic views, two double bedrooms upstairs with plenty of built in storage and two bathrooms, one of which is ensuite to the master. Available unfurnished and viewings are highly recommended.

LOCATION:

Sutherland Place is a peaceful, tree lined street in the ever popular Artesian Road group of streets, well placed just to the east of Ledbury Road and the north of Westbourne Grove, moments from many of Notting Hill's most fashionable boutiques and restaurants.

LOCAL AUTHORITY AND COUNCIL TAX BAND:

City Of Westminster (Band F)

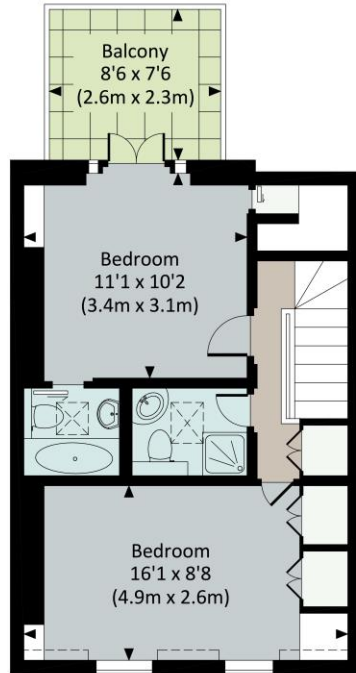


SUTHERLAND PLACE, W2

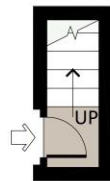
Approx. gross internal area

886 Sq.Ft. / 82.3 Sq.M.

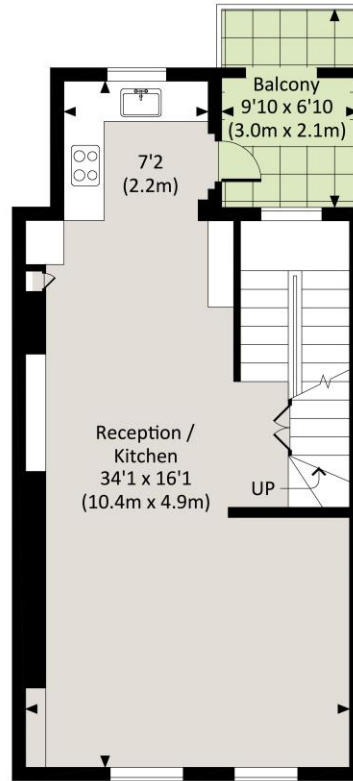
891 Sq.Ft. / 82.8 Sq.M. Inc. Restricted Height Area



THIRD FLOOR



FIRST FLOOR

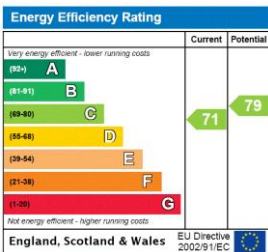


SECOND FLOOR



All measurements have been made in accordance with RICS Code of Measuring Practice which are approximate only and only for illustrative purposes. For the avoidance of doubt, Dowling Jones Design shall not be liable for any reliance on these measurements. © 2016 www.dowlingjones.com 020 7610 9933

This floorplan is for illustration purposes only and is not to scale. The position and size of doors, windows, appliances and other features are approximate.



Notting Hill | 0207 727 3227 | nottinghill@winkworth.co.uk



winkworth.co.uk

for every step...

winkworth wishes to inform prospective buyers and tenants that these particulars are a guide and act as information only. All our details are given in good faith and believed to be correct at the time of printing but they don't form part of an offer or contract. No Winkworth employee has authority to make or give any representation or warranty in relation to this property. All fixtures and fittings, whether fitted or not are deemed removable by the vendor unless stated otherwise and room sizes are measured between internal wall surfaces, including furnishings.