



**BLenheim GARDENS, NW2**  
**£2,750 PER MONTH PART FURNISHED**

**EXTREMELY SPACIOUS APARTMENT MEASURING OVER 1,500SQ FT,  
 COMPRISES OF TWO DOUBLE BEDROOM WITH VAULTED CEILINGS,  
 SEPARATE FITTED KITCHEN, LOCATED MOMENTS FROM WILLEDEN  
 GREEN UNDERGROUND STATION.**

Kensal Rise & Queens Park | 0208 960 4947 | [kensalrise@winkworth.co.uk](mailto:kensalrise@winkworth.co.uk)

**Winkworth**

for every step...

[winkworth.co.uk](http://winkworth.co.uk)



## DESCRIPTION:

Split over two levels and offered 1,517sq ft of living, this apartment offers spacious double bedrooms both with vaulted ceilings, a separate eat in kitchen, bright reception room and at the top of the stairs there is additional space for an office space.

Furnishing 2025

Lounge

Large sofa

Dining table with 4 chairs

Tall bookcase

Sideboard

TV stand

Glass side table

Office Space

Desk

Chair

Small bookcase

Small wardrobe

Bedroom 1

King size bed

1 Bedside table

Double wardrobe

Large chest of drawers

Blanket Box

Corner Desk

Chair

Bedroom 2

Double bed

2 bedside tables

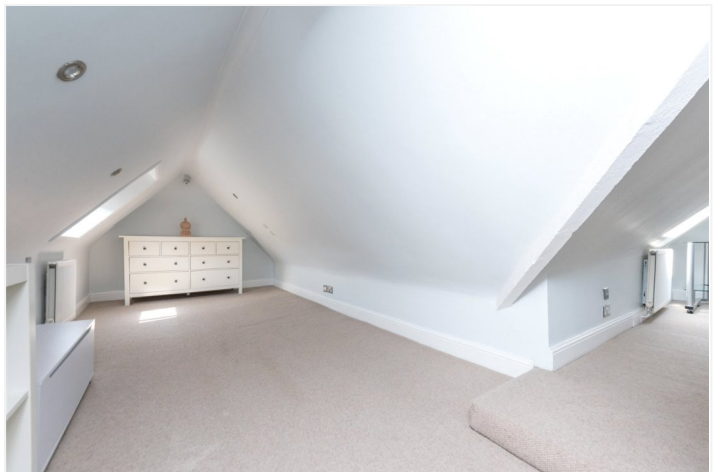
Desk

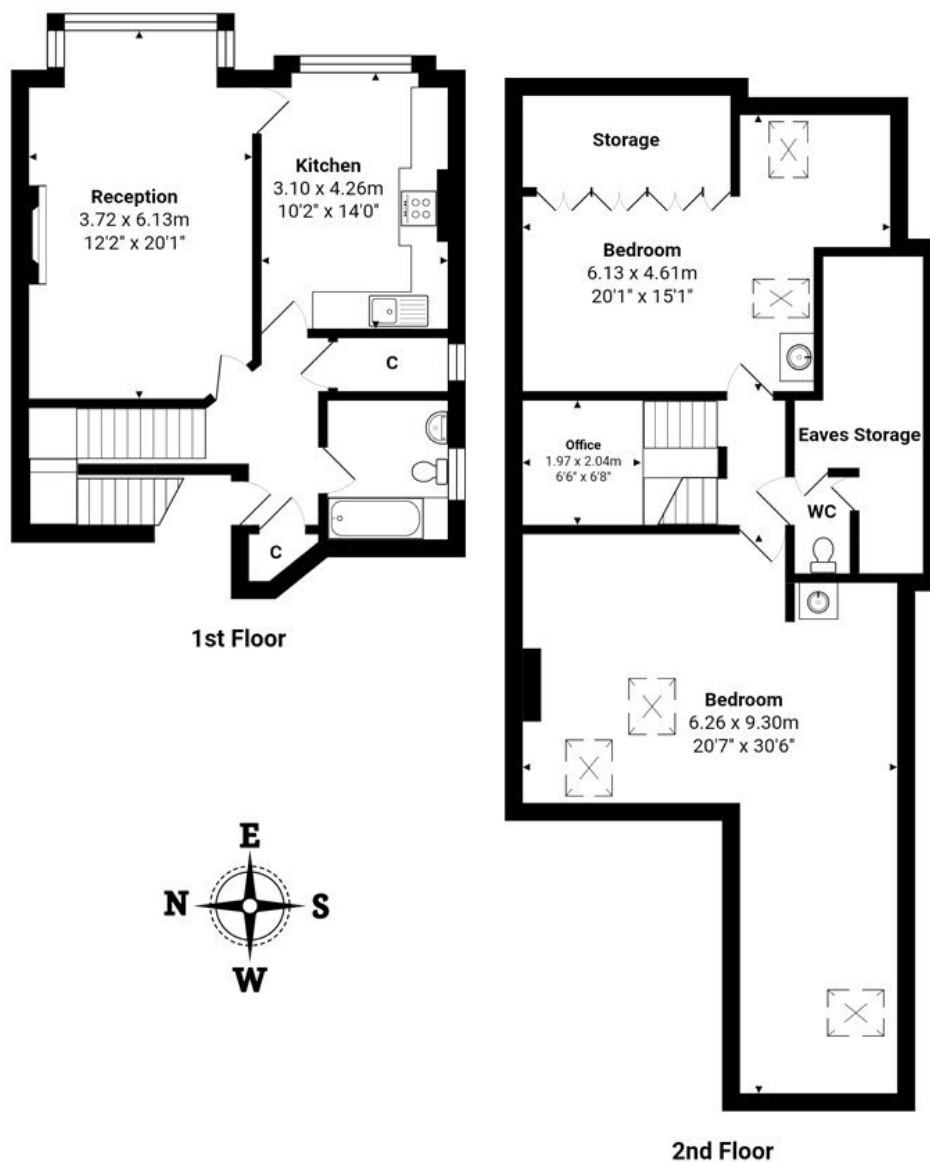
Chair

Cupboard

(This room has built in wardrobes)







Total Area: 141.0 m<sup>2</sup> ... 1517 ft<sup>2</sup>

All measurements are approximate and for display purposes only

This floorplan is for illustration purposes only and is not to scale. The position and size of doors, windows, appliances and other features are approximate.

Score	Energy rating	Current	Potential
92+	A		
81-91	B		
69-80	C		
55-68	D		60 D
39-54	E	40 E	
21-38	F		
1-20	G		

**Deposit:** 5 weeks rent

**Holding Deposit:** 1 weeks rent

**Council Tax Band:** D

Where no figures are shown, we have been unable to ascertain the information. All figures that are shown were correct at the time of printing.

Kensal Rise & Queens Park | 0208 960 4947 | kensalrise@winkworth.co.uk

**Winkworth**

for every step...

winkworth.co.uk

Winkworth wishes to inform prospective buyers and tenants that these particulars are a guide and act as information only. All our details are given in good faith and believed to be correct at the time of printing but they don't form part of an offer or contract. No Winkworth employee has authority to make or give any representation or warranty in relation to this property. All fixtures and fittings, whether fitted or not are deemed removable by the vendor unless stated otherwise and room sizes are measured between internal wall surfaces, including furnishings.