



THIRSK ROAD, CR4
OIEO £550,000 FREEHOLD

A THREE BEDROOM FAMILY HOME LOCATED
A SHORT WALK FROM TOOTING CITY
THAMESLINK AND FIGGES MARSH.

Tooting | 020 8767 5221 | tooting@winkworth.co.uk

Winkworth

for every step...

winkworth.co.uk



DESCRIPTION:

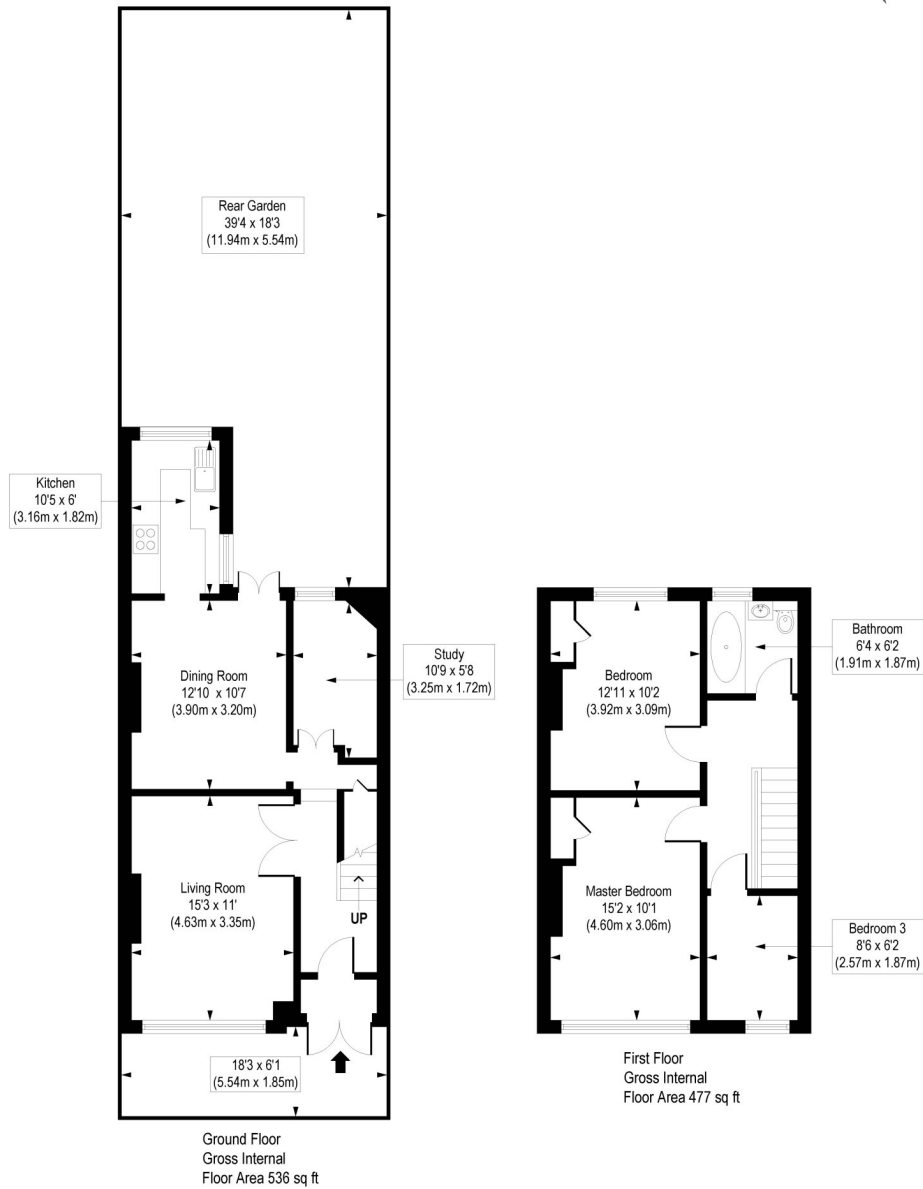
An opportunity to acquire a terraced period family home located on a quiet residential street within reach of Tooting City Thameslink and local amenities. The ground floor currently comprises, large living room, separate dining room adjacent, galley style kitchen and a paved private garden. The first floor has two superb double bedrooms, one single bedroom and a family bathroom. The property has fantastic potential to extend.

The property is superbly located in a quiet residential road just around the corner from Tooting station, providing excellent links into Central London. There are an array of shops, bars, restaurants and amenities close-by, and underground station at Tooting Broadway is also within just a short distance.



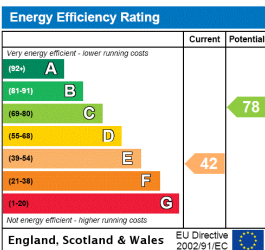
Thirsk Road, CR4

Approx. Gross Internal Floor Area 1013 sq. ft / 94.11 sq. m



COMPLIANT WITH RICS CODE OF MEASURING PRACTICE. Floorplan is for illustrative purposes only and is not to scale. Every attempt has been made to ensure the accuracy of the floorplan shown, however all measurements, fixtures, fittings and data shown are an approximate interpretation for illustrative purposes only. Liability for errors, omissions or mis-statement through negligence or otherwise is hereby excluded.

This floorplan is for illustration purposes only and is not to scale. The position and size of doors, windows, appliances and other features are approximate.



Tooting | 020 8767 5221 | tooting@winkworth.co.uk

for every step...

winkworth.co.uk

Winkworth wishes to inform prospective buyers and tenants that these particulars are a guide and act as information only. All our details are given in good faith and believed to be correct at the time of printing but they don't form part of an offer or contract. No Winkworth employee has authority to make or give any representation or warranty in relation to this property. All fixtures and fittings, whether fitted or not are deemed removable by the vendor unless stated otherwise and room sizes are measured between internal wall surfaces, including furnishings.