



Fulham Road, SW10

£350,000 *Leasehold*



A stylish and well-proportioned studio apartment, ideally located in the heart of West Chelsea.

This contemporary property is light and airy throughout and features a studio room with wooden flooring, a modern shower room, and a fully fitted separate kitchen. Positioned at mezzanine level, the flat is well located for the wide range of amenities, shops, and restaurants along Fulham Road, as well as excellent transport links nearby.

KEY FEATURES

- Bright & Airy
- Fully Fitted Separate Kitchen
- Wood Flooring
- Mezzanine
- Chain Free



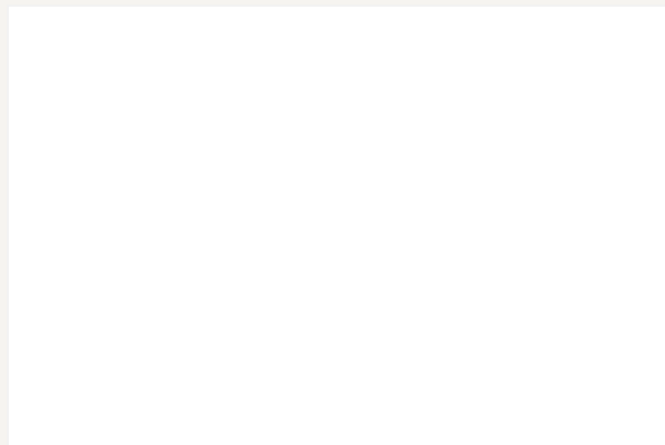
South Kensington Sales

020 7373 5052 | southkensington@winkworth.co.uk

Winkworth

for every step...





MATERIAL INFO

Tenure: Leasehold

Term: 103 year and 9 months

Service Charge: £1140 per annum

Ground Rent: £ 10 Annually (subject to increase)

Council Tax Band: D

EPC rating: C

FULHAM ROAD, SW10

APPROXIMATE GROSS INTERNAL AREA

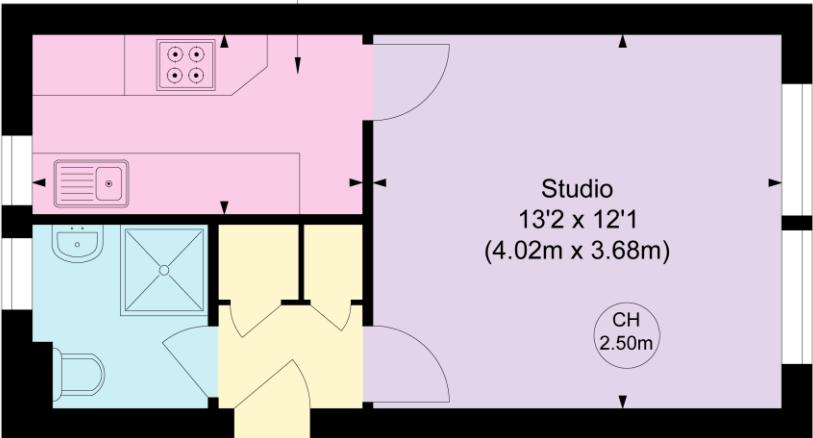
292 Ft² - 27.12 M²

COMPLIANT WITH RICS CODE OF MEASURING PRACTICE Floorplan is for illustrative purposes only and is not to scale. Every attempt has been made to ensure the accuracy of the floorplan shown, however all measurements, fixtures, fittings and data shown are an approximate interpretation for illustrative purposes only. Liability for errors, omissions or mis-statement through negligence or otherwise is hereby excluded.

Key :
CH - Ceiling Height



Kitchen
10'8 x 5'10
(3.25m x 1.77m)

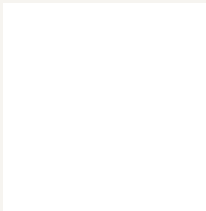


SECOND FLOOR

Winkworth

Score	Energy rating	Current	Potential
92+	A		
81-91	B		
69-80	C	77 C	80 C
55-68	D		
39-54	E		
21-38	F		
1-20	G		

For more information, scan the QR code or visit the link below



<https://www.winkworth.co.uk/sale/property/SKN250097>

Where no figures are shown, we have been unable to ascertain the information. All figures that are shown were correct at the time of printing.

South Kensington Sales

020 7373 5052 | southkensington@winkworth.co.uk

Winkworth

for every step...

Winkworth wishes to inform prospective buyers and tenants that these particulars are a guide and act as information only. All our details are given in good faith and believed to be correct at the time of printing but they don't form part of an offer or contract. No Winkworth employee has authority to make or give any representation or warranty in relation to this property. All fixtures and fittings, whether fitted or not are deemed removable by the vendor unless stated otherwise and room sizes are measured between internal wall surfaces, including furnishings.