



LADBROKE GROVE, LONDON, W10  
**£1,895 PER MONTH FURNISHED**

**Winkworth**





## LADBROKE GROVE, LONDON, W10

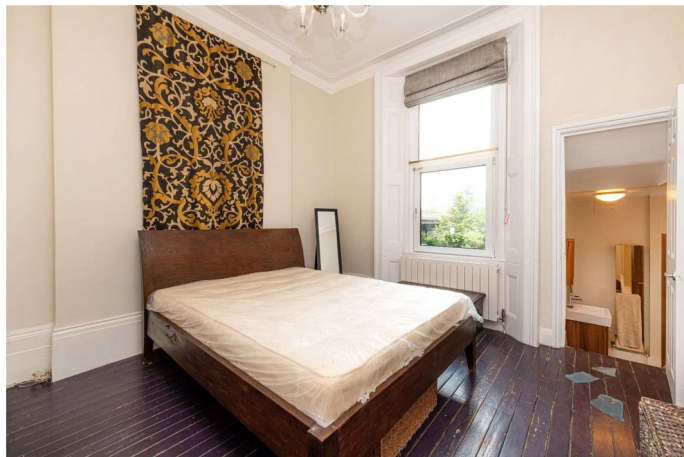
Spacious One-Bedroom Apartment in Prime Ladbroke Grove/Notting Hill Location

Ideally situated in the heart of Ladbroke Grove and just moments from vibrant Portobello Road, this spacious one-bedroom apartment offers the best of West London living. With excellent transport links nearby—including Ladbroke Grove Underground Station—and a wealth of local amenities, shops, and eateries on your doorstep, the location is second to none.

The property comprises a generous reception room with high ceilings, a modern fully fitted kitchen, a large double bedroom, and a well-appointed bathroom.

### LOCATION

North Kensington's multicultural charm shines in Ladbroke Grove, a dynamic neighbourhood known for its eclectic mix of unique restaurants, artisan coffee shops, and antique furniture stores. The world-famous Portobello Market is just a short stroll away, adding to the area's distinctive character and appeal.

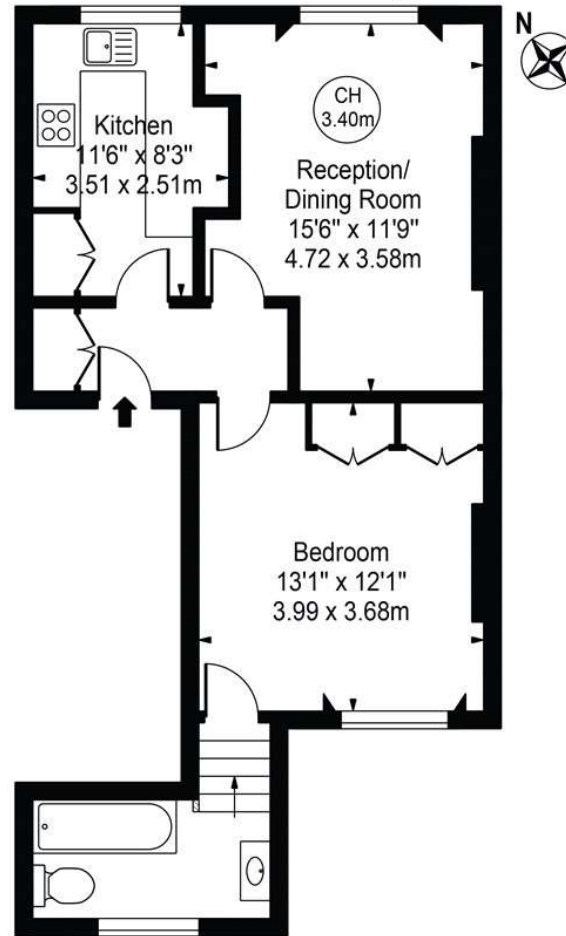






# Ladbroke Grove

Approx. Gross Internal Area 518 Sq Ft - 48.12 Sq M



First Floor

For Illustration Purposes Only - Not To Scale

This floor plan should be used as a general outline for guidance only and does not constitute in whole or in part an offer or contract. Any intending purchaser or lessee should satisfy themselves by inspection, searches, enquiries and full survey as to the correctness of each statement. Any areas, measurements or distances quoted are approximate and should not be used to value a property or be the basis of any sale or let. Copyright Morriarti Photography & Design LTD

Score	Energy rating	Current	Potential
92+	A		
81-91	B		
69-80	C	72 C	79 C
55-68	D		
39-54	E		
21-38	F		
1-20	G		

North Kensington | 020 7792 5000 | northkensington@winkworth.co.uk

winkworth.co.uk

Winkworth wishes to inform prospective buyers and tenants that these particulars are a guide and act as information only. All our details are given in good faith and believed to be correct at the time of printing but they don't form part of an offer or contract. No Winkworth employee has authority to make or give any representation or warranty in relation to this property. All fixtures and fittings, whether fitted or not are deemed removable by the vendor unless stated otherwise and room sizes are measured between internal wall surfaces, including furnishings.

Winkworth