



FOULSER ROAD, SW17
£975,000 FREEHOLD

AN EXCITING OPPORTUNITY TO ACQUIRE A THREE-BEDROOM FAMILY HOUSE IN A SOUGHT AFTER LOCATION

Tooting | 020 8767 5221
17 Upper Tooting Road, London, SW17 7TS

Winkworth

winkworth.co.uk

See things differently



DESCRIPTION:

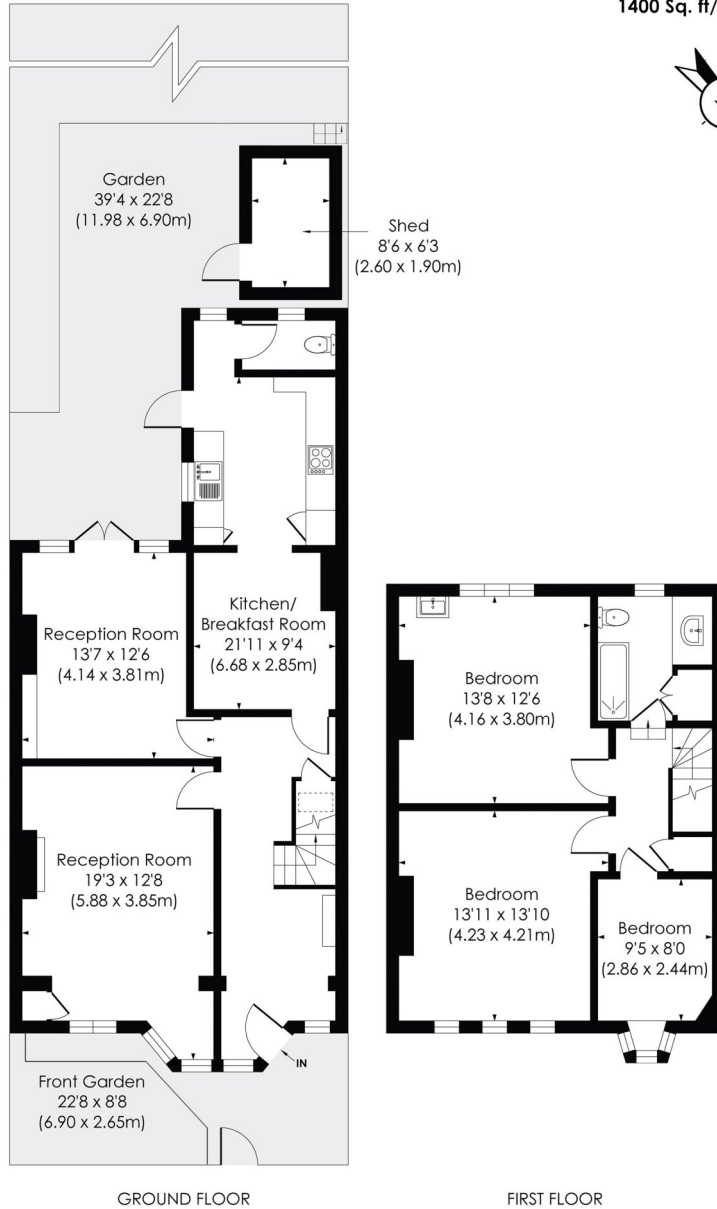
A unique opportunity to acquire a three-bedroom family house situated in one of Tooting Bec's most sought-after roads. The house requires some updating and modernising yet retains many original features throughout. It offers huge scope to extend into the loft and rear (subject to the necessary planning permission) to create a fabulous family home. The ground floor consists of a large hallway leading to two well-proportioned reception rooms, a breakfast room and a kitchen with a separate WC. The first floor contains three double bedrooms and a family bathroom. The property has a good-sized south facing garden to the rear.

Foulser Road is a quiet residential road within walking distance of Tooting Bec tube station and local bus stops. The area has many amenities including good schools, numerous restaurants and Tooting Bec Common'.



FOULSER ROAD, SW17

Approx. Gross Internal Floor Area
1400 Sq. ft/130.03 Sq. m

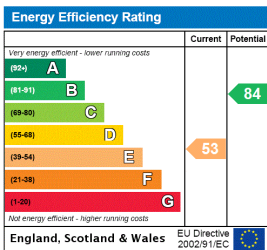


pixangle
PROPERTY MARKETING

This floor plan has been prepared for illustration purposes only, in accordance with the latest RICS code of measuring and is not to scale. All measurements and areas are approximate and whilst every effort has been made to ensure the accuracy of the plan contained here, no responsibility is taken for any error, omission or misstatement.

© Pixangle Property Marketing Ltd. info @pixangle.com Tel: 0208 870 2118

This floorplan is for illustration purposes only and is not to scale. The position and size of doors, windows, appliances and other features are approximate.



Tooting | 020 8767 5221 | tooting@winkworth.co.uk
17 Upper Tooting Road, London, SW17 7TS



winkworth.co.uk

See things differently

Winkworth wishes to inform prospective buyers and tenants that these particulars are a guide and act as information only. All our details are given in good faith and believed to be correct at the time of printing but they don't form part of an offer or contract. No Winkworth employee has authority to make or give any representation or warranty in relation to this property. All fixtures and fittings, whether fitted or not are deemed removable by the vendor unless stated otherwise and room sizes are measured between internal wall surfaces, including furnishings.