

Aylesbury Road, Southwark, London, SE17

£450,000 Share of Freehold

A Victorian one-bedroom flat on the popular Aylesbury Road. The flat has a private garden and is maintained to a very high standard throughout.

Winkworth

LOCATION

Aylesbury Road is within proximity to Walworth Road, where there are plenty of local amenities such as restaurants, local supermarkets and high street shops. A few moments away is Burgess Park which has tennis courts, an outdoor gym, manicured gardens, as well as a café.

DESCRIPTION

Upon entering the property, you are welcomed by the reception room which overlooks the quiet street to the front of the property. The room is well-proportioned with large, double-glazed sash windows which provide plenty of natural light. There is ample space for two large sofas, a coffee table and television, if desired.

The bedroom is a good size and sits in the centre of the property, with a large sash window overlooking the garden.

The kitchen is presented beautifully with ample storage and worktop space. A washing machine, a fitted oven with gas hob and a sink are some of the defining features within the kitchen.

The bathroom is a modern tiled suite with a basin, heated towel rail, W.C. and a bath with shower. The paved garden is well-maintained with ample space for garden furniture and a BBQ, if desired.

A street parking permit can be obtained from Southwark Council.

SERVICE CHARGE, GROUND RENT AND COUNCIL TAX

Service Charge - Nil

Ground Rent – Nil

Council Tax Band - B

UTILITIES

Electricity – mains connected

Gas – mains connected

Water – mains connected

Heating – gas central heating

Sewerage – mains connected

Broadband – Super Fast Fibre

LOCAL AUTHORITY

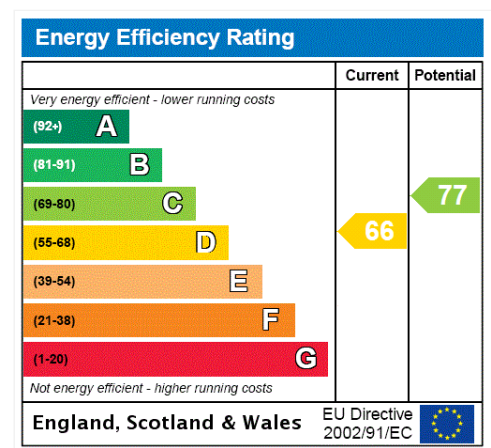
Southwark Council

TENURE

Share of Freehold - 189 years from 25 March 1969

DIRECTIONS

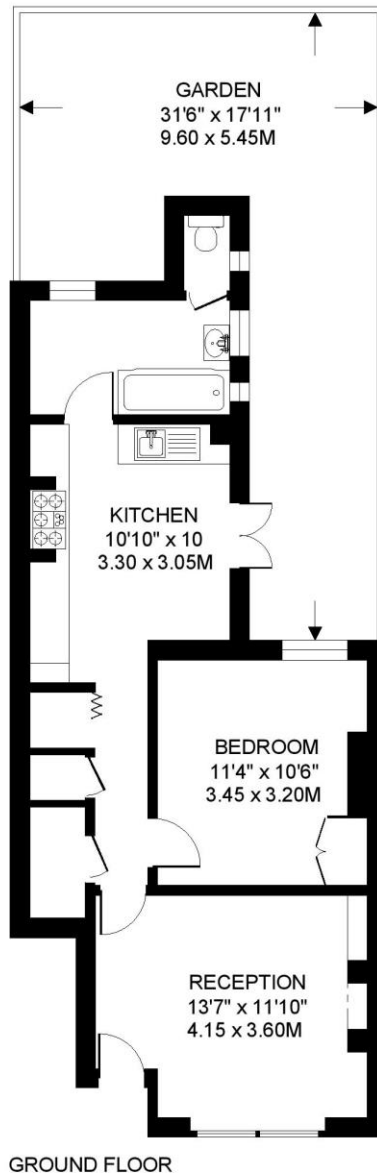
Kennington Underground (Northern Line) is approximately 1.0 mile away. Elephant and Castle Overground/Underground Station (National Rail, Northern & Bakerloo Lines) is also 1.0 mile away. The area is well-served by frequent bus services into central London.





AYLESBURY ROAD SE17
1 BEDROOM FLAT

Approximate gross floor area
542 SQ.FT / 50.3 SQ.M.



This floorplan is for illustration purposes only and is not to scale. The position and size of doors, windows, appliances and other features are approximate.

Copyright: These plans should not be reproduced by any other person, without permission.
Floorplan produced for Winkworth by Floorplanners 07801 228850

Kennington | 020 7587 0600 | kennington@winkworth.co.uk