



FLAT 17, BUCKINGHAM HOUSE, PORTLAND RISE, LONDON, N4
OIEO £400,000 LEASEHOLD

A BRIGHT 2 DOUBLE BEDROOM APARTMENT WITH PRIVATE BALCONY NEAR CLISSOLD PARK

Highbury | 0207 989 7000 | highbury@winkworth.co.uk

Winkworth

winkworth.co.uk

See things differently



DESCRIPTION:

A spacious, two double bedroom, purpose built apartment set across the third floor in this well kept block in Finsbury Park, N4. Standing at 705sqft, the property is presented in good condition and would make an excellent first-time purchase or investment. The bright and spacious reception room is well proportioned, while both bedrooms are genuine doubles and also overlook the peaceful communal areas. The property is completed with a kitchen and separate bathroom & toilet.

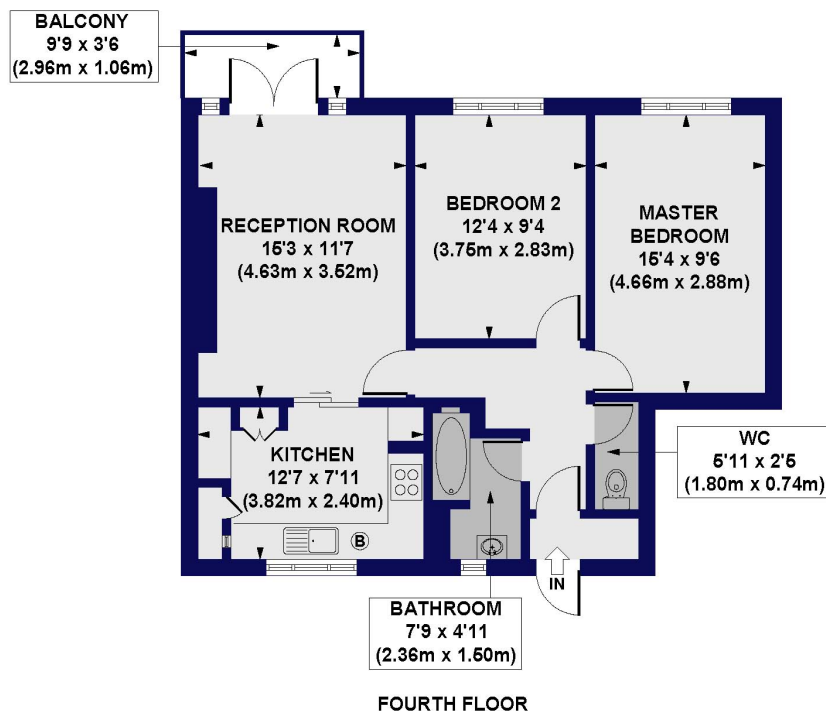
Portland Rise is a mature residential area which is renowned for its neighbourly feel. The property is perfectly situated for an array of local amenities including independent shops, restaurants and coffee shops as well as being in easy reach of three local parks and Woodberry Downs reservoir. Clissold Park is only a short distance away and transport links are some of the best around with Manor House providing the Picadilly Line and Finsbury Park offering overground services (including the Thameslink network serving the City and Gatwick Airport) and underground services on the Victoria line. There is an array of buses that consistently run through Green Lanes.

*Any associated charges including, but not limited to, service charge, ground rent and sinking funds

Winkworth



Buckingham House, Portland Rise, N4
Approx. Gross Internal Floor Area 705 sq. ft / 65.50 sq. m



All measurements of walls, doors, windows, fittings and appliances, including their size and location, are shown as standard sizes and do not constitute any warranty or representation by the seller, their agent or CP Creative. Any intending purchaser must satisfy himself by inspection or otherwise as to the correctness of the information contained in these plans. This plan is for illustrative purposes only and should be used as such by any prospective purchasers.

Winkworth

This floorplan is for illustration purposes only and is not to scale. The position and size of doors, windows, appliances and other features are approximate.

Highbury | 0207 989 7000 | highbury@winkworth.co.uk

Winkworth

winkworth.co.uk

See things differently

Winkworth wishes to inform prospective buyers and tenants that these particulars are a guide and act as information only. All our details are given in good faith and believed to be correct at the time of printing but they don't form part of an offer or contract. No Winkworth employee has authority to make or give any representation or warranty in relation to this property. All fixtures and fittings, whether fitted or not are deemed removable by the vendor unless stated otherwise and room sizes are measured between internal wall surfaces, including furnishings.