



Riverside House, Reading, Berkshire, RG1 6BJ

£2,100 per month *Furnished*

3  1  2 

Three double bedroom apartment with two private balconies located in Reading Town Centre next to the Oracle Shopping Centre. Internally the apartment comprises a large 18ft master bedroom with en suite shower room, two further double bedrooms, an open plan 20ft reception room leading into the kitchen with fitted appliances, a further bathroom and two balconies off the master bedroom and living area. Benefits also include an intercom system and secure allocated parking space. Available 6th October 2025. Furnished.

KEY FEATURES

- Three Double Bedrooms
- Large Open Plan Living/Dining Room
- Two Private Balconies
- Council tax band D
- Allocated Parking Space
- Available 6th October
- Furnished



Reading

0118 4022 300 | reading@winkworth.co.uk

Winkworth

for every step...



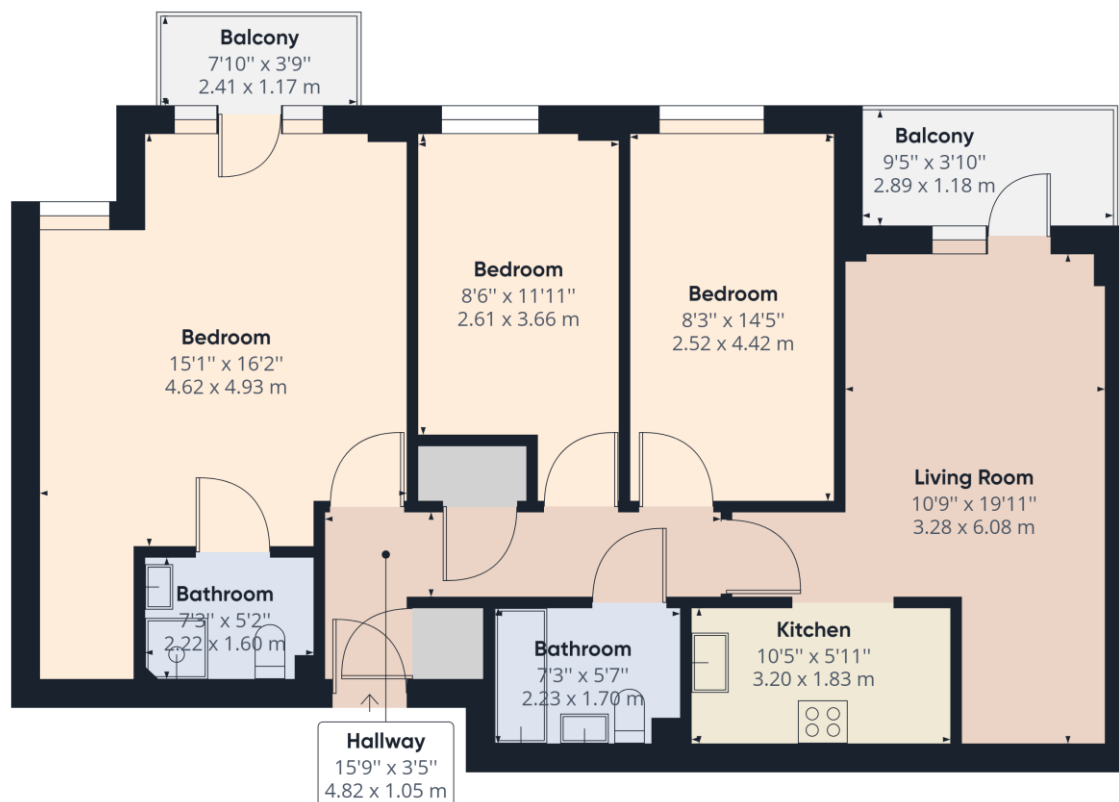


MATERIAL INFO

Deposit: £2,423.08

Holding Deposit: £484.61

Council Tax Band: D

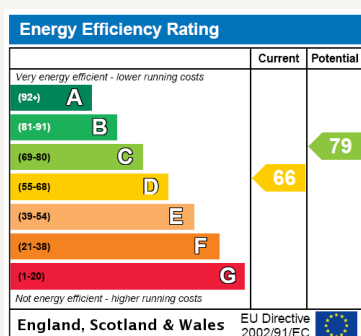


Approximate total area⁽¹⁾
928.79 ft²
86.29 m²

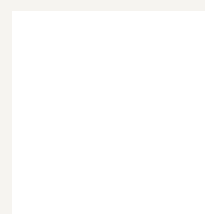
(1) Excluding balconies and terraces

While every attempt has been made to ensure accuracy, all measurements are approximate, not to scale. This floor plan is for illustrative purposes only.

GIRAFFE 360



For more information, scan the QR code or visit the link below



<https://www.winkworth.co.uk/rent/property/REA150384>

Where no figures are shown, we have been unable to ascertain the information. All figures that are shown were correct at the time of printing.

Reading

0118 4022 300 | reading@winkworth.co.uk

Winkworth

for every step...

Winkworth wishes to inform prospective buyers and tenants that these particulars are a guide and act as information only. All our details are given in good faith and believed to be correct at the time of printing but they don't form part of an offer or contract. No Winkworth employee has authority to make or give any representation or warranty in relation to this property. All fixtures and fittings, whether fitted or not are deemed removable by the vendor unless stated otherwise and room sizes are measured between internal wall surfaces, including furnishings.