



58 Newton Lane, Romsey, Hampshire, SO51 8GX

Winkworth



WONDERFUL TWO BEDROOM APARTMENT IN CENTRAL ROMSEY

This lovely property with views of the River Test is situated in a quiet and peaceful lane in one of the Town's most desirable locations and is within easy walking distance of the town centre. Romsey is an historic market town, providing an excellent range of leisure facilities and shops and supermarkets for everyday needs. Schools for all ages, both state and private, are readily available. There is easy access to the M27 and M3 motorways, serving the major centres of Southampton, Winchester and Bournemouth. In addition, there is an excellent local bus service and a train station linking with the mainline services to London at Southampton. The New Forest National Park is within 6 miles of Romsey.

Maintained to a high standard this two-bedroom, ground floor apartment is light and airy and benefits from its own private outside terrace. The hallway into the property is a good size, providing a lovely welcome and has the useful addition of fitted storage cupboards. The modern kitchen is fully equipped with a wide range of eye and base level units and is open to the generous sitting/dining room with feature square bay window and double doors leading out onto the garden. The principal bedroom benefits from an en-suite shower room. Bedroom two is also a double and is serviced by the separate walk-in shower room. Both bedrooms have the advantage of built in wardrobes.

The outlook from the apartment is wonderful, overlooking the memorial park and the River Test. The beautifully landscaped garden is a real haven for wildlife with regular sightings of the local Heron and Little Egret. The property also benefits from a private car barn with lockable storage.

Remaining years on lease: 977
Annual Service Charges: £2730
Ground Rent: £250

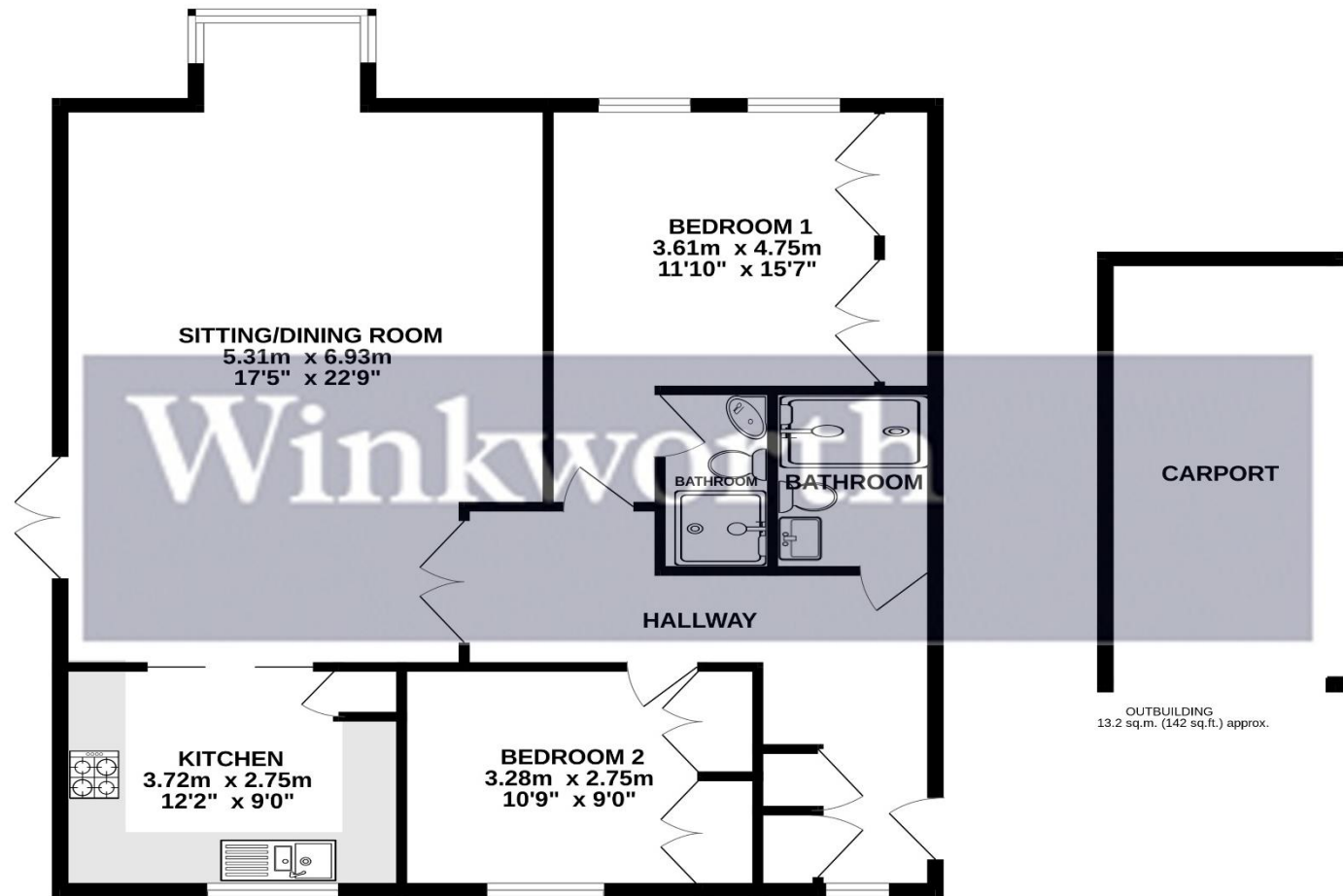




Winkworth

Address: 58 Newton Lane, Romsey,
Hampshire SO51 8GX

Council Tax Band: D
EPC: D
Tenure: Leasehold



GROUND FLOOR
94.4 sq.m. (1016 sq.ft.) approx.

TOTAL FLOOR AREA: 107.5 sq.m. (1158 sq.ft.) approx.
Produced by Ellis Bell Photography. This information has been prepared as guide only. The vendor and Estate Agents, make no warranties as its accuracy and all interested parties must rely on their own enquiries.
Made with Metropix ©2023

winkworth.co.uk/romsey

Winkworth Romsey

18 Market Place, Romsey, Hampshire, SO51 8NA
01794 511911 | romsey@winkworth.co.uk

winkworth.co.uk/romsey

Winkworth Winchester

2 Black Swan Buildings, Southgate Street,
Winchester, Hampshire, SO23 9DT
01962 866777 | winchester@winkworth.co.uk

Winkworth Mayfair & Country House Department

11 Berkeley Street, Mayfair, London, W1J 8DS
020 7871 0589 | countryhouse@winkworth.co.uk

Winkworth

See things differently