



DARTMOUTH COURT, GREENWICH, LONDON, SE10
£460,000 SHARE OF FREEHOLD

A SUPERB AND BRIGHT, TWO BEDROOM, FLAT THAT MEASURES CIRCA 694 SQ FT AND IS PART OF THIS HUGE POPULAR BLOCK THAT IS PERFECTLY LOCATED ON THE CUSP OF BLACKHEATH AND GREENWICH, SITTING ADJACENT TO THE OPEN HEATH!

Greenwich | 02030533033 | greenwich@winkworth.co.uk

Winkworth

winkworth.co.uk

See things differently



DESCRIPTION:

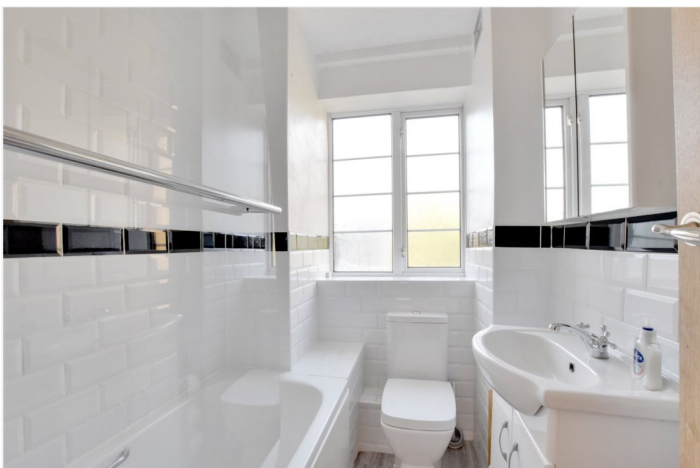
A superb and bright, two bedroom, flat that measures circa 694 sq ft and is part of this hugely popular block that is perfectly located on the cusp of Blackheath and Greenwich, sitting adjacent to the open heath!

Offered with no chain and with a Share of Freehold, the property is on the 2nd floor and is in excellent decorative order throughout. The accommodation comprises a 14ft reception room with hard wood flooring. There is a smart modern galley kitchen, a lovely newly fitted bathroom and two good sized double bedrooms. Along with a long entrance hall, the property also comes with excellent storage and communal grounds. It's worth mentioning that there is residents parking to the front, but this is strictly on a first come first serve basis.

As mentioned, Dartford Court is located in quite possibly one of the best positions in the area and sits just on the western edge of the heath. This position gives access to the three town centres of Blackheath, Greenwich and Lewisham, which offer a fantastic array of shops and restaurants, along with mainline rail and DLR.

AT A GLANCE

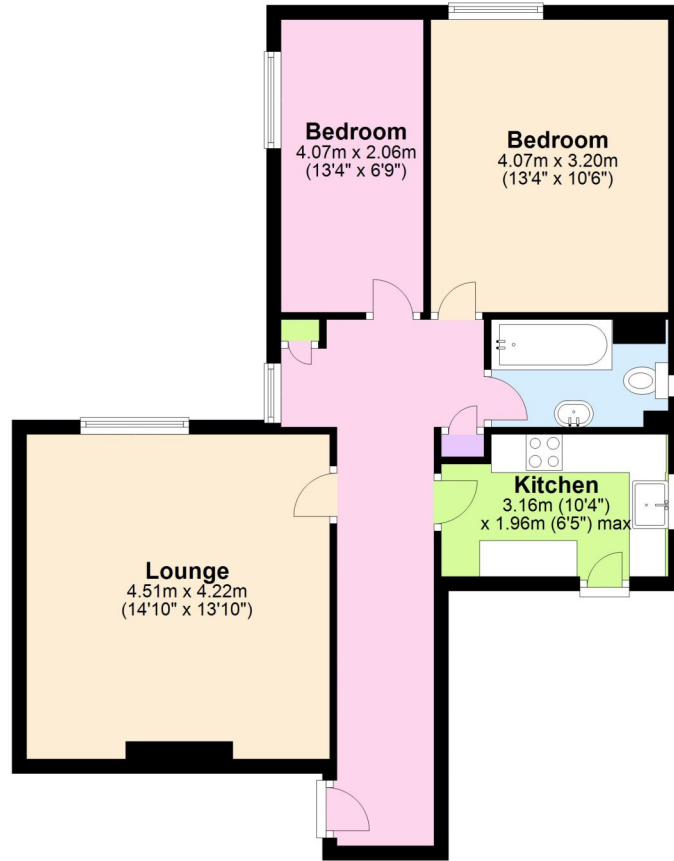
- beautiful two bedroom flat
- 2nd floor
- circa 694 sq ft
- Share of Freehold
- excellent condition
- no chain
- newly fitted bathroom
- lovely galley kitchen
- adjacent to Heath
- moments from the Royal Park
- good storage





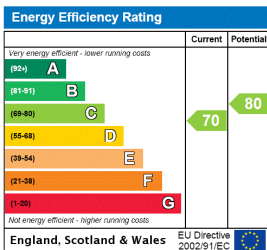
Second Floor

Approx. 64.5 sq. metres (694.3 sq. feet)



Total area: approx. 64.5 sq. metres (694.3 sq. feet)

This floorplan is for illustration purposes only and is not to scale. The position and size of doors, windows, appliances and other features are approximate.



Greenwich | 02030533033 | greenwich@winkworth.co.uk



winkworth.co.uk

See things differently

Winkworth wishes to inform prospective buyers and tenants that these particulars are a guide and act as information only. All our details are given in good faith and believed to be correct at the time of printing but they don't form part of an offer or contract. No Winkworth employee has authority to make or give any representation or warranty in relation to this property. All fixtures and fittings, whether fitted or not are deemed removable by the vendor unless stated otherwise and room sizes are measured between internal wall surfaces, including furnishings.