



Winkworth
for every step...



Winkworth
for every step...



Winkworth
for every step...

WAGHORN ROAD, HARROW, MIDDLESEX, HA3
£630,000 FREEHOLD

FOUR BEDROOM SEMI DETACHED FAMILY HOME IN A LOVELY LOCATION

Kingsbury | 020 8204 0000 | kingsbury@winkworth.co.uk

Winkworth

for every step...

winkworth.co.uk



Nestled within a peaceful residential enclave in Harrow, this well-presented semi-detached family home offers generous living space and modern convenience in an area popular with families. Ideally situated close to local amenities, excellent transport links, and highly regarded schools, it provides the perfect blend of comfort and practicality. The ground floor features a contemporary fitted kitchen, a bright and comfortable lounge, and a sleek shower room. A standout feature is the separate side annexe, complete with its own utility area – ideal as a private guest suite, home office, or multi-generational living space. Upstairs, the home boasts three well-proportioned bedrooms, including a spacious master bedroom with an en suite shower room. Externally, the property benefits from a well-sized rear garden – perfect for family enjoyment and outdoor entertaining – and off-street parking to the front. There is also excellent potential to extend (STPP), offering exciting scope for future growth. An internal viewing is essential.



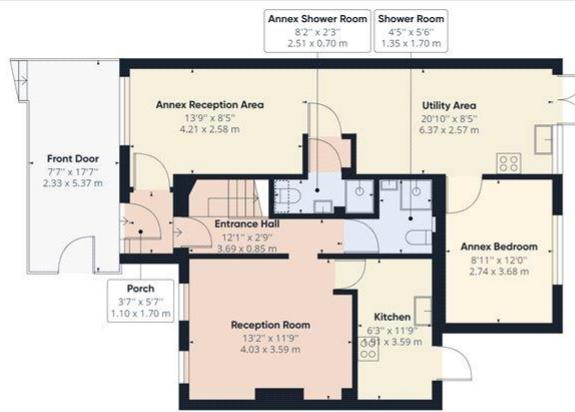
Winkworth

for every step...



Winkworth

for every step...



Ground Floor Building 1



Floor 1 Building 1

Approximate total area⁽¹⁾

1101.45 ft²
102.33 m²

Reduced headroom

2.64 ft²
0.24 m²

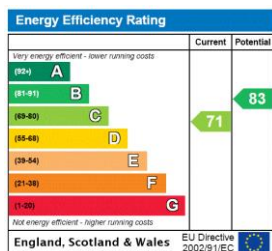
(1) Excluding balconies and terraces

Reduced headroom
(below 1.5m/4.92ft)

While every attempt has been made to ensure accuracy, all measurements are approximate, not to scale. This floor plan is for illustrative purposes only.

GIRAFFE360

This floorplan is for illustration purposes only and is not to scale. The position and size of doors, windows, appliances and other features are approximate.



Tenure: Freehold

Council Tax Band: D - Harrow

All figures that are shown were correct at the time of printing.

Kingsbury | 020 8204 0000 | kingsbury@winkworth.co.uk

Winkworth

for every step...

winkworth.co.uk

Winkworth wishes to inform prospective buyers and tenants that these particulars are a guide and act as information only. All our details are given in good faith and believed to be correct at the time of printing but they don't form part of an offer or contract. No Winkworth employee has authority to make or give any representation or warranty in relation to this property. All fixtures and fittings, whether fitted or not are deemed removable by the vendor unless stated otherwise and room sizes are measured between internal wall surfaces, including furnishings.