



London Road, SE23

£280,000 *Leasehold*



This modern One bedroom apartment in a purpose-built building features a private balcony and high-quality finishes throughout. Conveniently located with easy access to local amenities and transport links

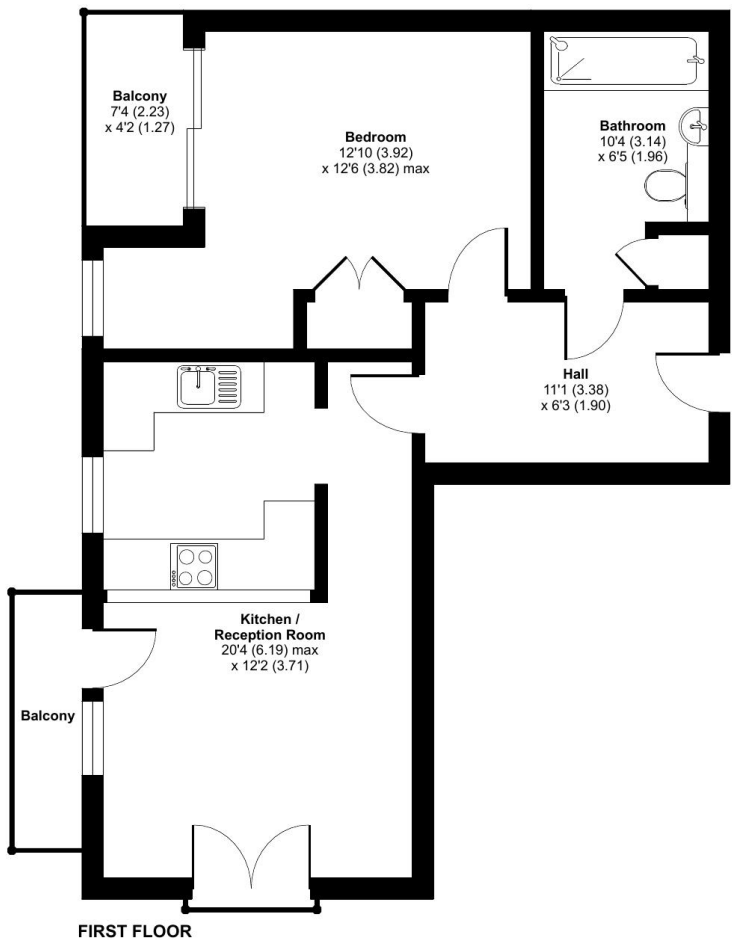


**Forest Hill**

| [foresthill@winkworth.co.uk](mailto:foresthill@winkworth.co.uk)

London Road, London, SE23

Approximate Area = 570 sq ft / 53 sq m  
For identification only - Not to scale



Floor plan produced in accordance with RICS Property Measurement Standards incorporating International Property Measurement Standards (IPMS2 Residential). © nichecom 2025. Produced for Winkworth Forest Hill and New Cross. REF: 1360930

MATERIAL INFO

Tenure: Leasehold

For more information, scan the QR code or visit the link below



<https://www.winkworth.co.uk/sale/property/FHL250281>

Where no figures are shown, we have been unable to ascertain the information. All figures that are shown were correct at the time of printing.

Forest Hill

| [foresthill@winkworth.co.uk](mailto:foresthill@winkworth.co.uk)