



Verdure Gardens

Ferndown, BH22 9FY

Guide Price £725,000

Winkworth



GUIDE PRICE £725,000 FREEHOLD

A rare opportunity to purchase this stunning five double bedroom, three bathroom, three reception room detached house positioned on a private road with a totally uninterrupted outlook across woodland.

With just a select number of exclusive properties located on this secluded side of the development, this house is not to be missed!

Further benefits include a low maintenance west facing garden, utility room leading to an integral garage and a driveway.

Five Double Bedroom Detached House
Secluded Position Adjacent To Woodland
West Facing Garden
Utility Room & Integral Garage
Driveway
Sought After Development
Guest WC
Stunning Interior
Log Burner
Kitchen/Diner/Family Room
Three Bathrooms

EPC B I Council Tax Band F

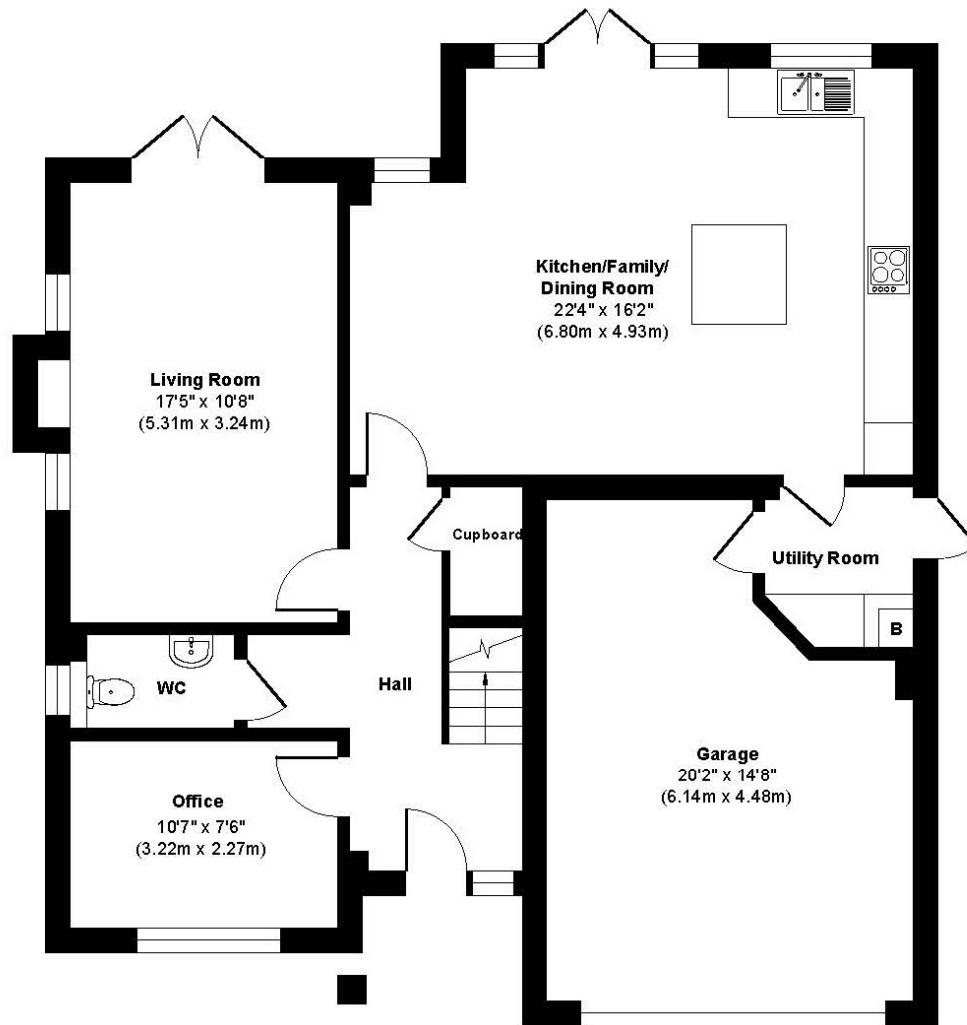
01202 434365
ferndown@winkworth.co.uk



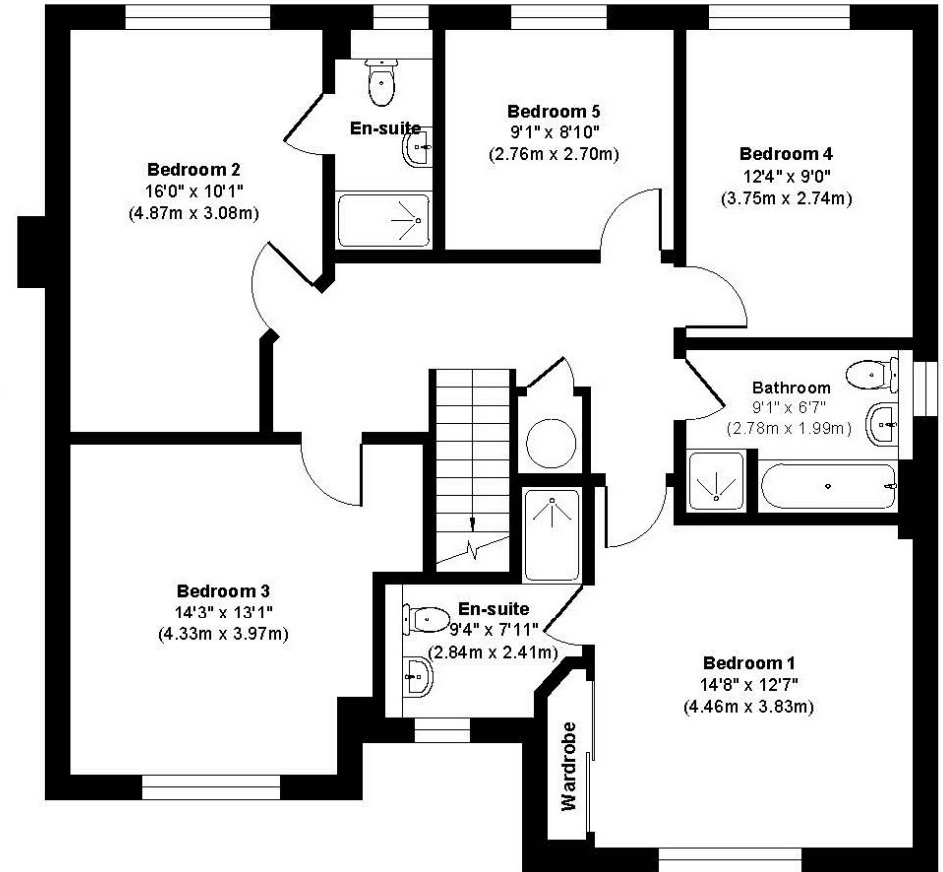




Verdure Gardens



Ground Floor
Approximate Floor Area
1122 sq. ft
(104.25 sq. m)



First Floor
Approximate Floor Area
1036 sq. ft
(96.25 sq. m)

Approx. Gross Internal Floor Area 2158 sq. ft / 200.50 sq. m.

Whilst every attempt has been made to ensure the accuracy of the floorplan shown, all measurements, positioning, fixtures, fittings and any other data shown are an approximate interpretation for illustrative purposes only and are not to scale.



LOCATION

A short distance from Ferndown town centre which has a range of shops, cafes and amenities including an M&S Foodhall. Within easy reach of a range of good schools and close to bus routes which give you access to Bournemouth, Wimborne and Poole, all of which have an excellent range of shops, bars, restaurants and leisure facilities. Award winning sandy beaches are just twenty minutes away and the A31 provides quick access to the New Forest, Southampton and London. Ferndown Golf Course is easily accessible, and for those who like the outdoors you can explore the nature reserve opposite, Longham Lakes and the River Stour, both of which are within walking distance.

Winkworth Ferndown

406 Ringwood Road, Ferndown, Dorset, BH22 9AU

01202 434365 | ferndown@winkworth.co.uk

winkworth.co.uk/ferndown

Winkworth