



The Manor House, Sonning, Berkshire, RG4 6ur

£1,495 per month *Unfurnished*

2  1  1 

This two bedroom ground floor apartment is situated in an idyllic Thames side setting. Whilst offering the tranquillity of a village location this property offers excellent transport links being just over three miles from Central Reading and two miles from Twyford, both with their direct links to London via the Elizabeth Line (Crossrail) linking Reading with Canary Wharf and the City of London. The property comprises living room, separate kitchen, two bedrooms and a three piece bathroom. Available now. Unfurnished.

KEY FEATURES

- Modern two bedroom apartment
- In the Picturesque Setting of Sonning
- Council tax band D
- Off road parking space
- Available now
- Unfurnished

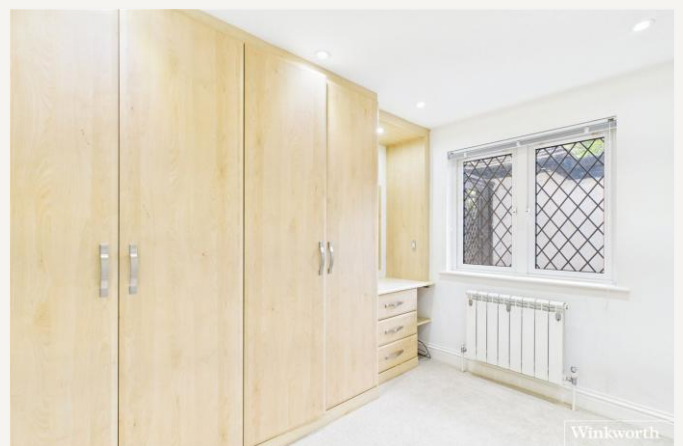


Reading

0118 4022 300 | reading@winkworth.co.uk

Winkworth

for every step...



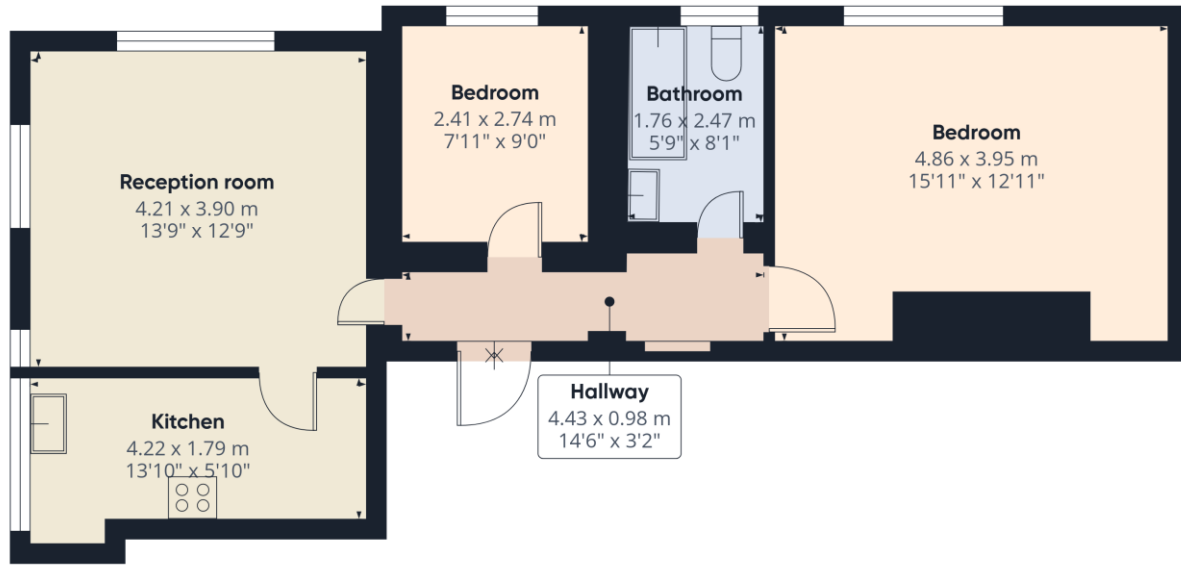


MATERIAL INFO

Deposit: £1,725.00

Holding Deposit: £345.00

Council Tax Band: D

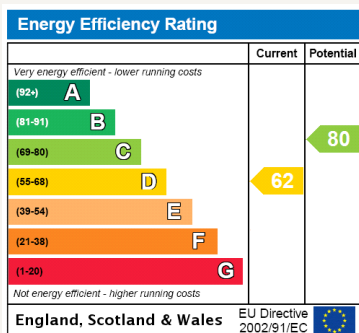


Approximate total area⁽¹⁾
57.9 m²
624 ft²

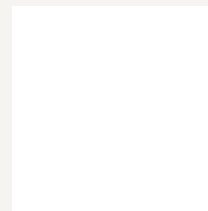
(1) Excluding balconies and terraces

Calculations reference the RICS IPMS 3C standard. Measurements are approximate and not to scale. This floor plan is intended for illustration only.

GIRAFFE360



For more information, scan the QR code or visit the link below



<https://www.winkworth.co.uk/rent/property/REA240542>

Where no figures are shown, we have been unable to ascertain the information. All figures that are shown were correct at the time of printing.

Reading

0118 4022 300 | reading@winkworth.co.uk

Winkworth

for every step...