



GUNNERSBURY LANE, LONDON, W3
£965,000 FREEHOLD

COUNCIL TAX BAND: F
EPC: C

Ealing & Acton | 0208 896 0123 | ealing@winkworth.co.uk

Winkworth

for every step...

winkworth.co.uk



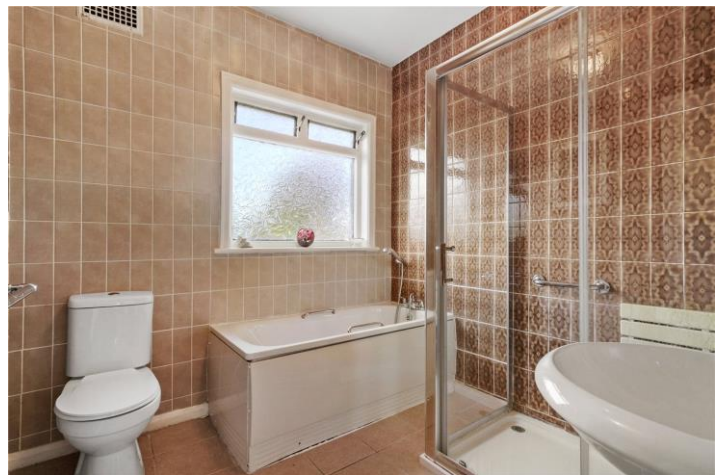
DESCRIPTION:

Well-proportioned semi-detached family home which is conveniently located within close proximity to Acton Town underground station and Gunnersbury Park. The house comprises four bedrooms, two bathrooms, two reception rooms and a separate kitchen. In addition, the property further benefits from private driveway which allows off-street parking for at least two vehicles and a private secluded rear garden. The house spans over 1,400 sq ft and also holds potential for loft conversion and rear extension subject to planning permission and relevant consents. Chain-free sale.



Winkworth

for every step...



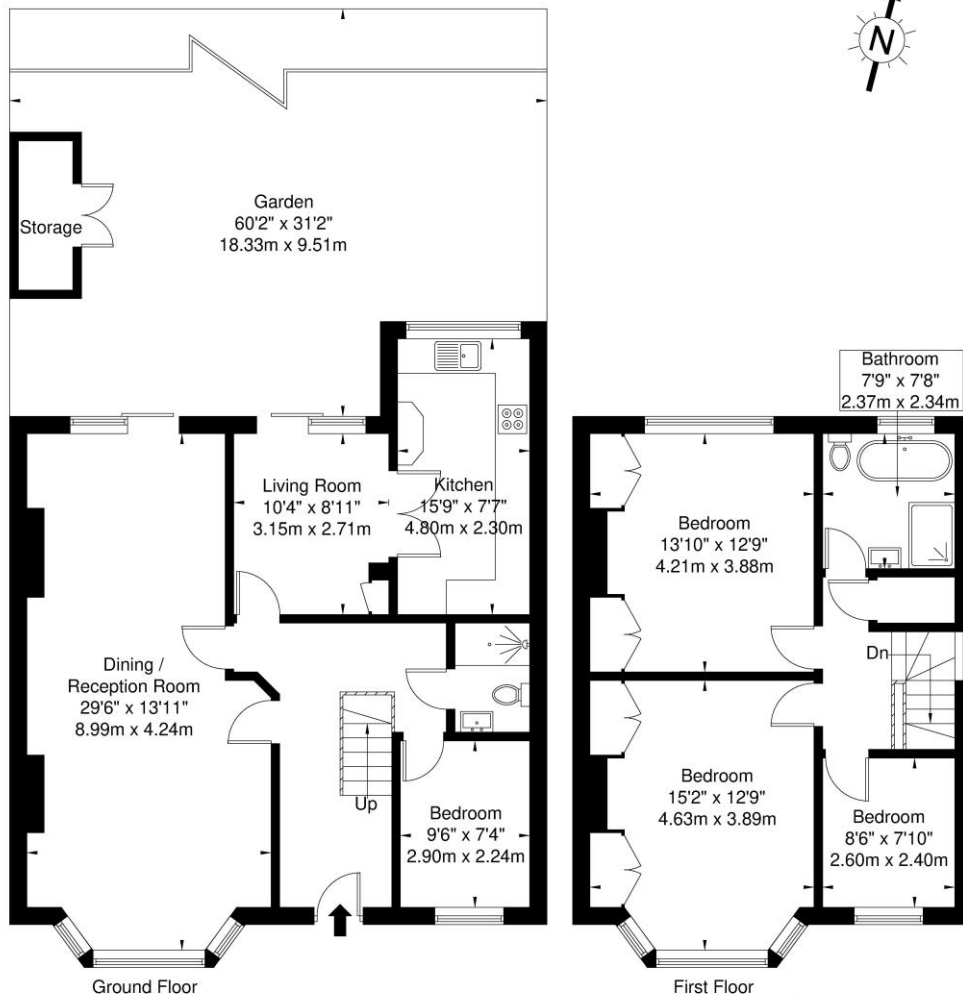
Winkworth
for every step...

Gunnersbury Lane W3 9BB

Approx. Gross Internal Area = 132.0 sq m / 1421 sq ft

Storage = 2.5 sq m / 27 sq ft

Total = 134.5 sq m / 1448 sq ft



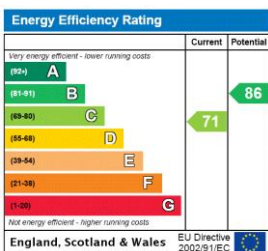
Ref

Copyright **BLEU PLAN**

The Floor plan is not to scale and measurements and areas shown are approximate and therefore should be used for illustrative purposes only. The plan has been prepared in accordance with the RICS code of Measuring Practice and whilst we have confidence in the information produced it must not be relied on. If there is any aspect of particular importance, you should carry out or commission your own inspection of the property.

Copyright @ BLEUPLAN

This floorplan is for illustration purposes only and is not to scale. The position and size of doors, windows, appliances and other features are approximate.



Ealing & Acton | 0208 896 0123 | ealing@winkworth.co.uk

Winkworth

for every step...

winkworth.co.uk

Winkworth wishes to inform prospective buyers and tenants that these particulars are a guide and act as information only. All our details are given in good faith and believed to be correct at the time of printing but they don't form part of an offer or contract. No Winkworth employee has authority to make or give any representation or warranty in relation to this property. All fixtures and fittings, whether fitted or not are deemed removable by the vendor unless stated otherwise and room sizes are measured between internal wall surfaces, including furnishings.