



CATHERINE GROVE, GREENWICH, LONDON, SE10
£1,050,000 FREEHOLD

WE ARE DELIGHTED TO OFFER THIS BEAUTIFULLY PRESENTED THREE BEDROOM THREE STOREY END OF TERRACE HOUSE THAT IS PERFECTLY LOCATED ON THIS QUIET ROAD IN THE ASHBURNHAM TRIANGLE, WEST GREENWICH.

Greenwich | 02030533033 | greenwich@winkworth.co.uk

Winkworth



DESCRIPTION:

We are delighted to offer this beautifully presented three bedroom, three storey end of terrace house that is perfectly located on this quiet road in the Ashburnham Triangle, in West Greenwich.

In fine decorative order, the property briefly comprises of a lovely 23ft kitchen diner on the lower floor which has great storage and access to a pretty, low maintenance 43ft private garden with shed.

On the entrance floor there are two receptions, bathroom and a separate WC. On the top floor there are two double bedrooms with a further bedroom/study on a half landing. Added features include underfloor heating to the kitchen, bathroom, recently refurbished working fireplaces and WC. There is also a newly fitted Oak staircase plus excellent storage.

Catherine Grove, as mentioned previously is well located and is just a short walk from Greenwich town centre with local shops, riverboat service, Royal Park, mainline rail and DLR.

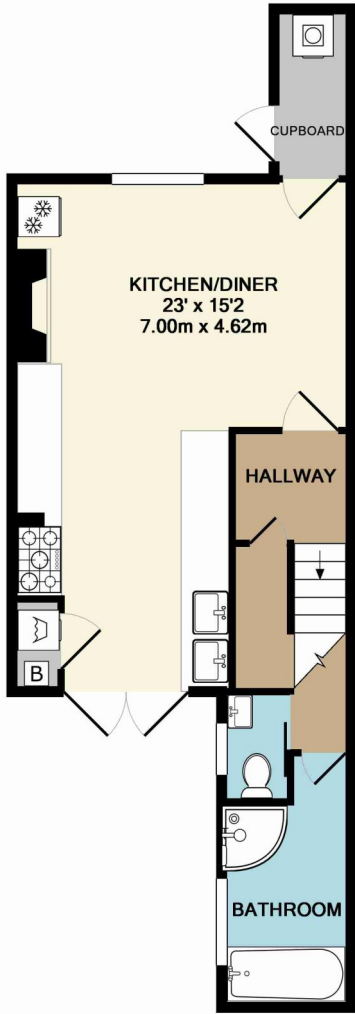
Please note, that the property is being offered chain free. Your earliest viewing is recommended.

AT A GLANCE

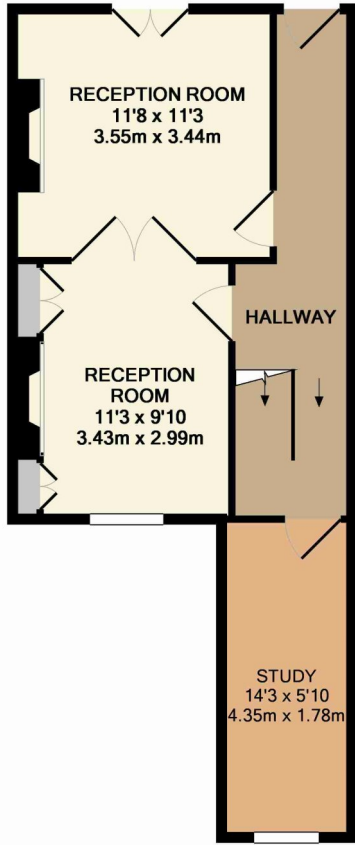
- CHAIN FREE
- superb 3 bedroom house
- end of terrace
- stunning 43ft garden
- excellent condition
- 23ft kitchen diner
- superb bathroom and sep WC
- partial underfloor heating
- Ashburnham Triangle location
- close to rail and shops



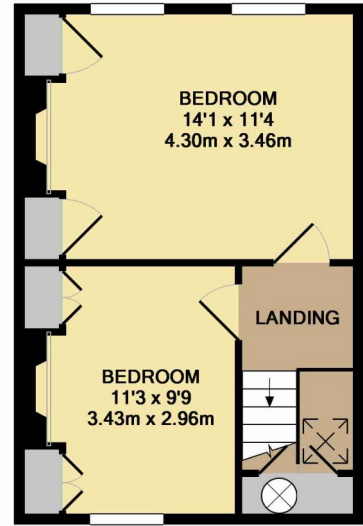




GROUND FLOOR
APPROX. FLOOR
AREA 456 SQ.FT.
(42.4 SQ.M.)



1ST FLOOR
APPROX. FLOOR
AREA 430 SQ.FT.
(39.9 SQ.M.)

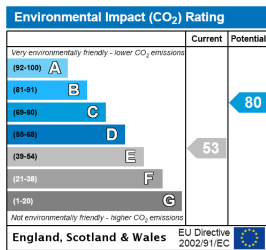
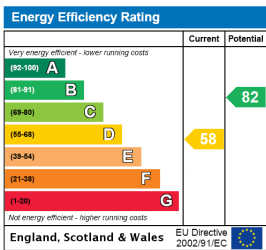


2ND FLOOR
APPROX. FLOOR
AREA 347 SQ.FT.
(32.2 SQ.M.)

TOTAL APPROX. FLOOR AREA 1233 SQ.FT. (114.5 SQ.M.)

Whilst every attempt has been made to ensure the accuracy of the floor plan contained here, measurements of doors, windows, rooms and any other items are approximate and no responsibility is taken for any error, omission, or mis-statement. This plan is for illustrative purposes only and should be used as such by any prospective purchaser. The services, systems and appliances shown have not been tested and no guarantee as to their operability or efficiency can be given
Made with Metropix ©2015

This floorplan is for illustration purposes only and is not to scale. The position and size of doors, windows, appliances and other features are approximate.



Greenwich | 02030533033 | greenwich@winkworth.co.uk



winkworth.co.uk

See things differently

Winkworth wishes to inform prospective buyers and tenants that these particulars are a guide and act as information only. All our details are given in good faith and believed to be correct at the time of printing but they don't form part of an offer or contract. No Winkworth employee has authority to make or give any representation or warranty in relation to this property. All fixtures and fittings, whether fitted or not are deemed removable by the vendor unless stated otherwise and room sizes are measured between internal wall surfaces, including furnishings.