



ELSTREE WAY, HERTFORDSHIRE, WD6

£320,000 LEASEHOLD

**A MODERN TWO DOUBLE BEDROOM
APARTMENT LOCATED ON THE FIFTH FLOOR OF
THIS LUXURY DEVELOPMENT**

Borehamwood | 020 8953 8899 | borehamwood@winkworth.co.uk



DESCRIPTION:

Situated on the fifth floor of the highly regarded Elstree House development and boasting luxuries such as a concierge, secure gated parking, gymnasium and multiple lifts is this two double bedroom apartment with a Southerly facing balcony

Located close to the newly constructed multi million pound Sky Studios, main arterial roads including the A1, M1 and M25 and approx. one mile from Borehamwood town centre and Thameslink station the property is ideal for a first time buyer, downsizers and investors alike.

AT A GLANCE

- 2 Bedrooms
- 116 Year Lease
- Southerly Facing Balcony
- Gymnasium
- Concierge
- Allocated and Secure Parking Space





Approximate Gross Internal Area = 62.6 sq m / 674 sq ft

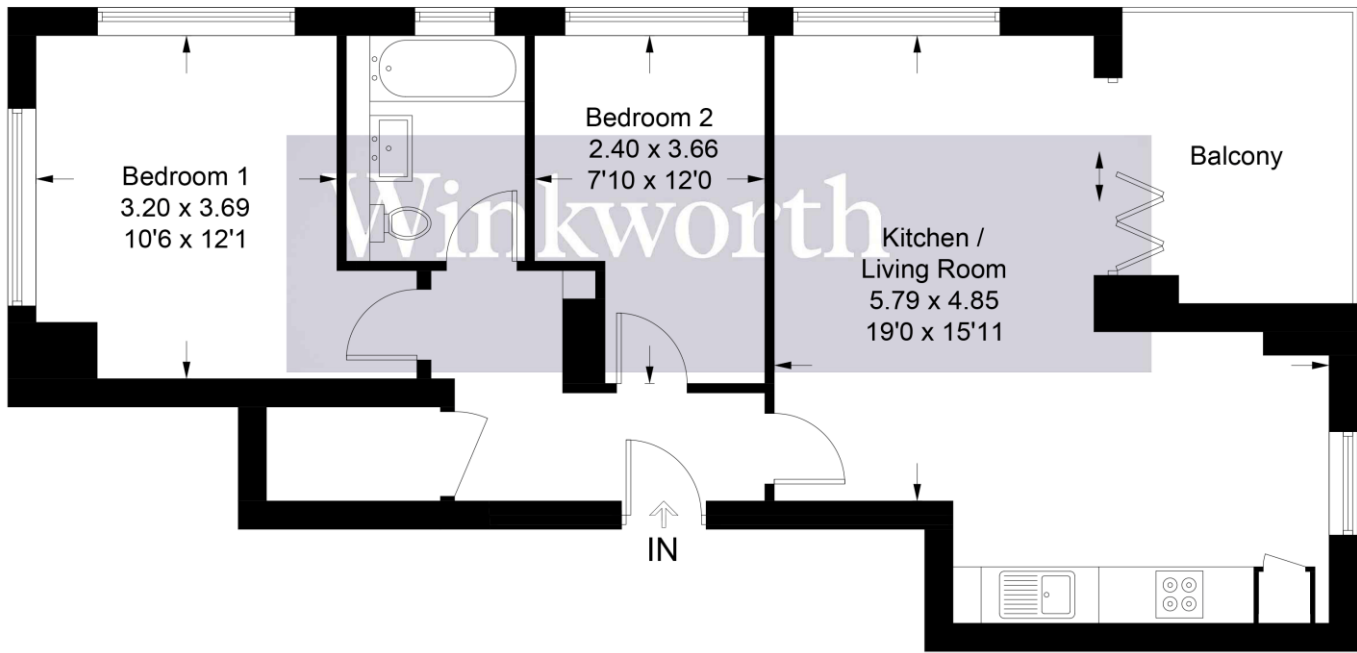


Illustration for identification purposes only, measurements are approximate,
not to scale. Winkworth © 2025 (ID1197250)

This floorplan is for illustration purposes only and is not to scale. The position and size of doors, windows, appliances and other features are approximate.

Score	Energy rating	Current	Potential
92+	A		
81-91	B		
69-80	C		
55-68	D	56 D	56 D
39-54	E		
21-38	F		
1-20	G		

Tenure: Leasehold

Term: 116 year and 8 months

Service Charge: £0 per annum

Ground Rent: £ 0 Annually (subject to increase)

Council Tax Band: D

Where no figures are shown, we have been unable to ascertain the information. All figures that are shown were correct at the time of printing.