



Braeside Road, West Moors

Ferndown BH22 0JS

Guide Price £700,000





GUIDE PRICE £700,000
FREEHOLD

This stunning three/four bedroom, three bathroom detached house is positioned on a secluded west facing plot in a sought after residential area of West Moors, a very short walk from West Moors Plantation.

No expense has been spared renovating this light and spacious home which features a luxury kitchen and modern bathrooms, solid oak doors, bespoke flooring and feature lighting to name just a few!

Parking For Several Vehicles
Detached House
Stunning Interior
Two En-suite Bedrooms
Garage
Landscaped West Facing Garden
Over 2000 Sq Ft
Integrated Kitchen With Quartz Worktops
Luxury Bathrooms
Utility Room & Guest WC

EPC D Council Tax Band F

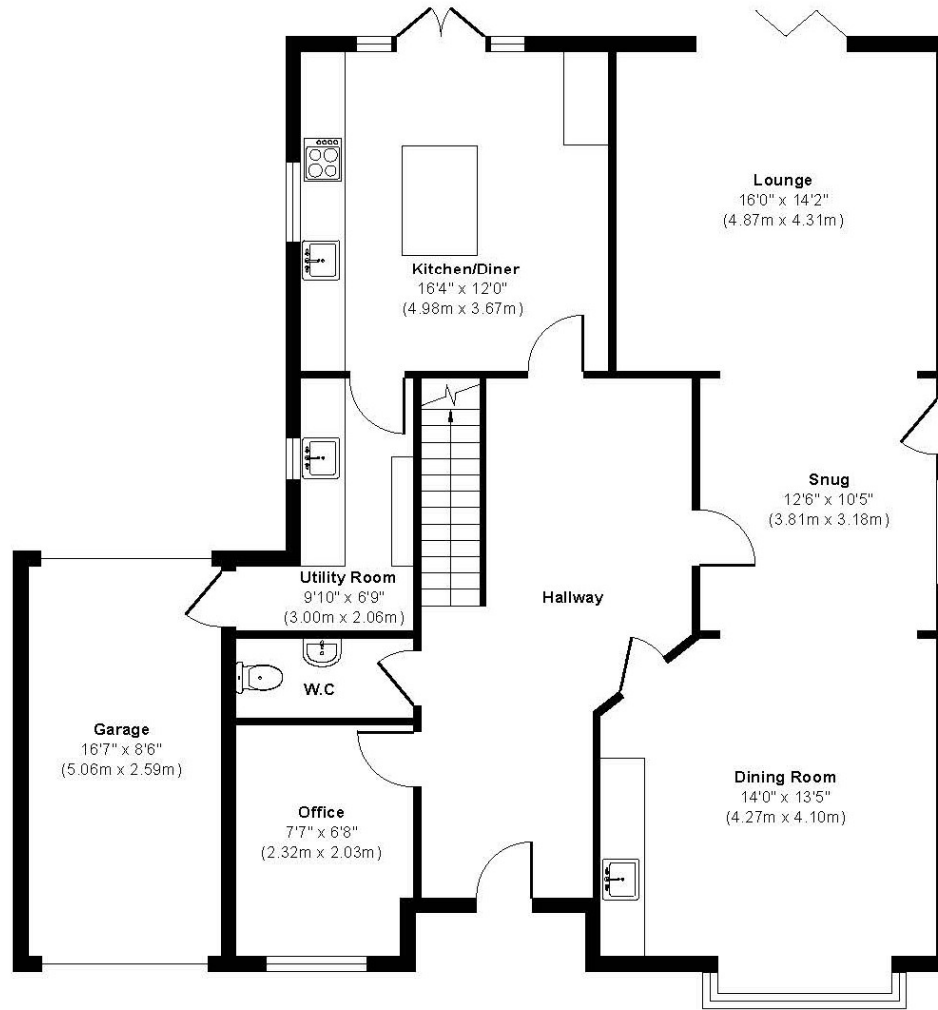
01202 434365
ferndown@winkworth.co.uk





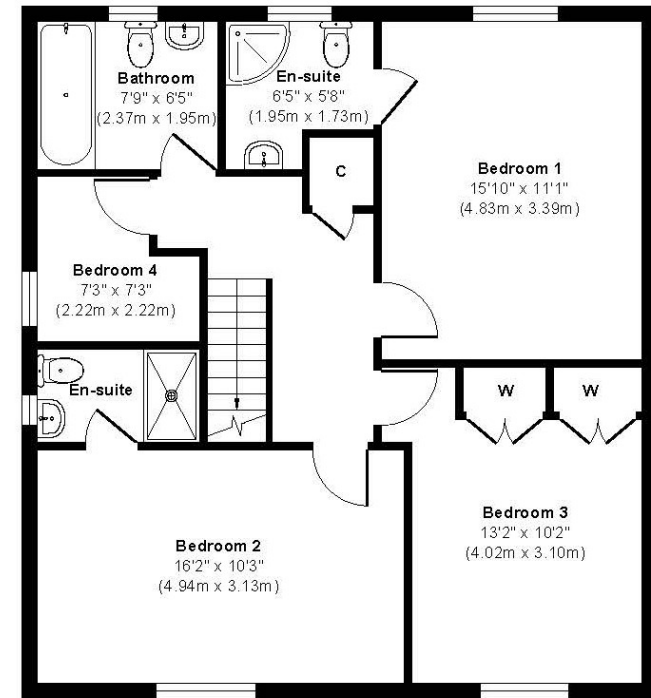


Braeside Road



Garage
 Approximate Floor Area
 146 sq. ft
 (13.57 sq. m)

Ground Floor
 Approximate Floor Area
 1160 sq. ft
 (107.73 sq. m)



First Floor
 Approximate Floor Area
 780 sq. ft
 (72.44 sq. m)

Approx. Gross Internal Floor Area 2086 sq. ft / 193.74 sq. m.

Whilst every attempt has been made to ensure the accuracy of the floorplan shown, all measurements, positioning, fixtures, fittings



LOCATION

A short walk from of a range of amenities and leisure facilities in the popular village of West Moors, within catchment for excellent schools and close to bus routes which give you easy access to Bournemouth, Poole & Wimborne all of which have an excellent range of shops, bars and restaurants. The property is also conveniently located within walking distance of West Moors plantation with its lovely walks and cycle paths, as well as the Castleman Trailway. The A31 provides quick access to the New Forest, Southampton, London and beyond for the commuter by car and award winning beaches are just twenty minutes away.

Winkworth Ferndown

406 Ringwood Road, Ferndown, Dorset, BH22 9AU

01202 434365 | ferndown@winkworth.co.uk

winkworth.co.uk/ferndown

Winkworth