



PALACE COURT, W2
£950 PER WEEK (£4,116.66 PCM) UNFURNISHED

**A VERY SPACIOUS TWO BEDROOM, TWO BATHROOM
 FLAT IN THIS SOUGHT AFTER AND IMPRESSIVE
 PORTERED BUILDING.**

Notting Hill Lettings | 0207 727 3227 | nottinghill@winkworth.co.uk

Winkworth

for every step...

winkworth.co.uk



DESCRIPTION:

This superb two double bedroom apartment boasts fantastic proportions throughout and is presented in excellent decorative order. The property comprises of a separate entrance, hallway, fully fitted kitchen, lovely spacious living room with high ceilings and large south facing bay window, master bedroom with ensuite bathroom, second double bedroom and shower room. The flat has wooden floors throughout and fantastic storage. It is available unfurnished.

Utilities:

Electricity – Mains

Water – Mains

Sewerage – Mains

Heating – Gas

Broadband <https://checker.ofcom.org.uk/en-gb/broadband-coverage>

Mobile Coverage <https://checker.ofcom.org.uk/en-gb/mobile-coverage>



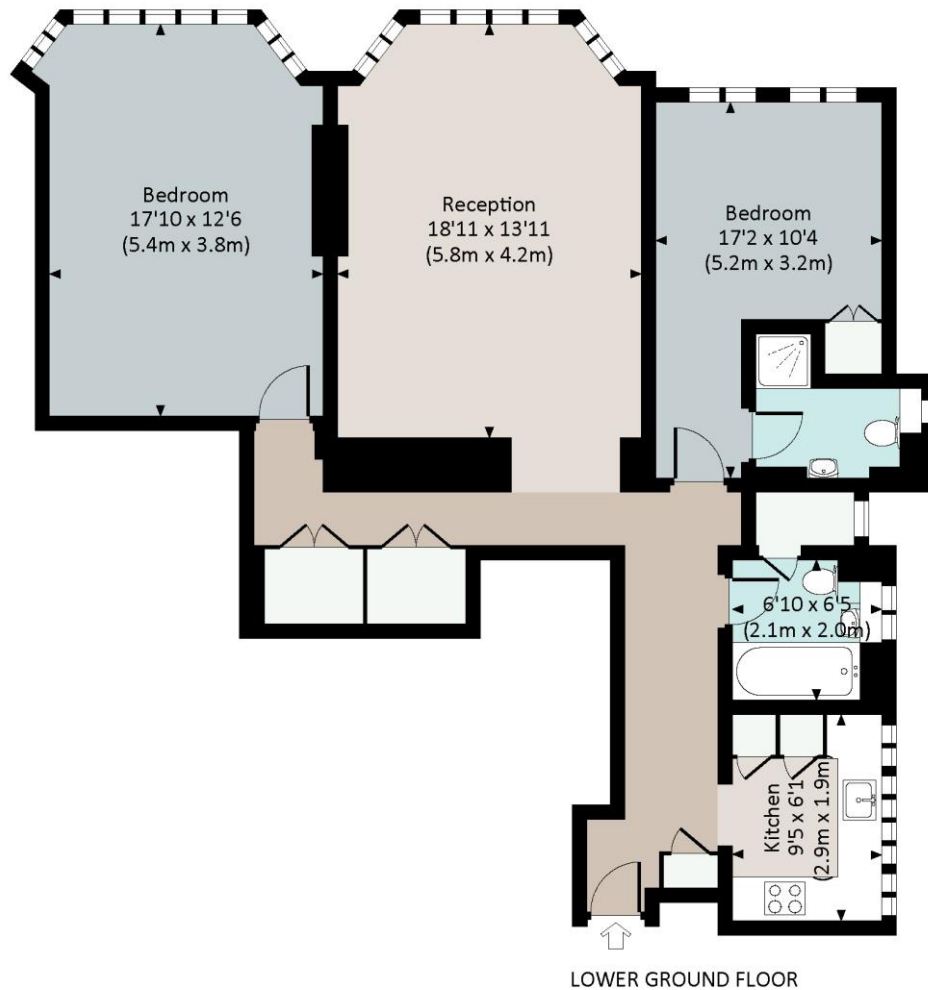


LOCATION:

Palace Court is in an extremely convenient location a short walk from the many transport links and amenities of Notting Hill Gate and from Kensington Gardens.

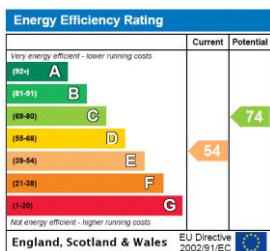
PALACE COURT, W2

Approx. gross internal area
1033 Sq Ft. / 96.0 Sq M.



All measurements have been made in accordance with RICS Code of Measuring Practice which are approximate only and only for illustrative purposes. For the avoidance of doubt, Dowling Jones Design shall not be liable for any reliance on these measurements. © 2019 www.dowlingjones.com 020 7610 9933

This floorplan is for illustration purposes only and is not to scale. The position and size of doors, windows, appliances and other features are approximate.



Deposit: £4,750

Holding Deposit: £950

Council Tax Band: F (Westminster)

Where no figures are shown, we have been unable to ascertain the information. All figures that are shown were correct at the time of printing.

Winkworth

for every step...

Notting Hill Lettings | 0207 727 3227 | nottinghill@winkworth.co.uk

winkworth.co.uk

Winkworth wishes to inform prospective buyers and tenants that these particulars are a guide and act as information only. All our details are given in good faith and believed to be correct at the time of printing but they don't form part of an offer or contract. No Winkworth employee has authority to make or give any representation or warranty in relation to this property. All fixtures and fittings, whether fitted or not are deemed removable by the vendor unless stated otherwise and room sizes are measured between internal wall surfaces, including furnishings.