



ALLEN WAY, READING, BERKSHIRE, RG2 9RB
£2,750 PER MONTH UNFURNISHED

**FOUR BEDROOM DETACHED HOUSE WITHIN
THE SHINFIELD MEADOWS DEVELOPMENT.
AVAILABLE 25TH AUGUST.**

Reading | 0118 4022 300 | reading@winkworth.co.uk

Winkworth

for every step...

winkworth.co.uk



DESCRIPTION:

Four bedroom detached house located within the popular Shinfield Meadows development a short walk of Shinfield Village providing local amenities, good access to the M4 (Junction 11) and Alder Grove CofE Primary School. The property comprises living room, modern kitchen which is open plan to the dining area with bi-fold doors opening out onto the private garden, cloak room and study on the ground floor. Four double bedrooms, en suite shower room to the master bedroom and a further three piece family bathroom occupy the first floor. Further benefits include driveway parking and garage. Available 26th August 2025. Unfurnished.

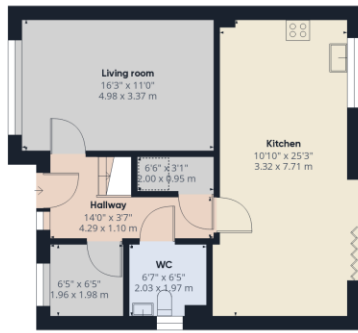
AT A GLANCE

- Four bedroom detached house
- Garage & driveway parking
- Private rear garden
- Council tax band F
- Available 26th August
- Unfurnished
- PETS CONSIDERED

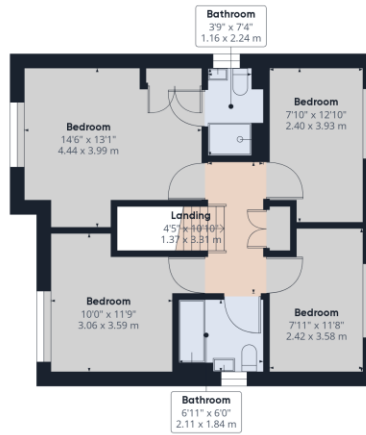








Ground Floor Building 1



Floor 1 Building 1



Ground Floor Building 2

Approximate total area⁽¹⁾
1504.86 ft²
139.81 m²

Reduced headroom
8.15 ft²
0.76 m²

(1) Excluding balconies and terraces

Reduced headroom
(below 1.5m/4.92ft)

While every attempt has been made to ensure accuracy, all measurements are approximate, not to scale. This floor plan is for illustrative purposes only.

GIRAFFE360

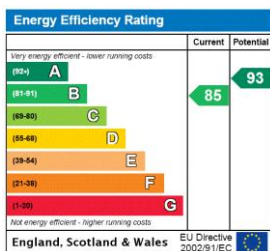
This floorplan is for illustration purposes only and is not to scale. The position and size of doors, windows, appliances and other features are approximate.

Deposit: £3,173.08

Holding Deposit: £634.61

Council Tax Band: F

Where no figures are shown, we have been unable to ascertain the information. All figures that are shown were correct at the time of printing.



Reading | 0118 4022 300 | reading@winkworth.co.uk

Winkworth

for every step...

winkworth.co.uk

Winkworth wishes to inform prospective buyers and tenants that these particulars are a guide and act as information only. All our details are given in good faith and believed to be correct at the time of printing but they don't form part of an offer or contract. No Winkworth employee has authority to make or give any representation or warranty in relation to this property. All fixtures and fittings, whether fitted or not are deemed removable by the vendor unless stated otherwise and room sizes are measured between internal wall surfaces, including furnishings.