



WESTBOURNE PARK ROAD, W11  
**£550 PER WEEK**

Winkworth



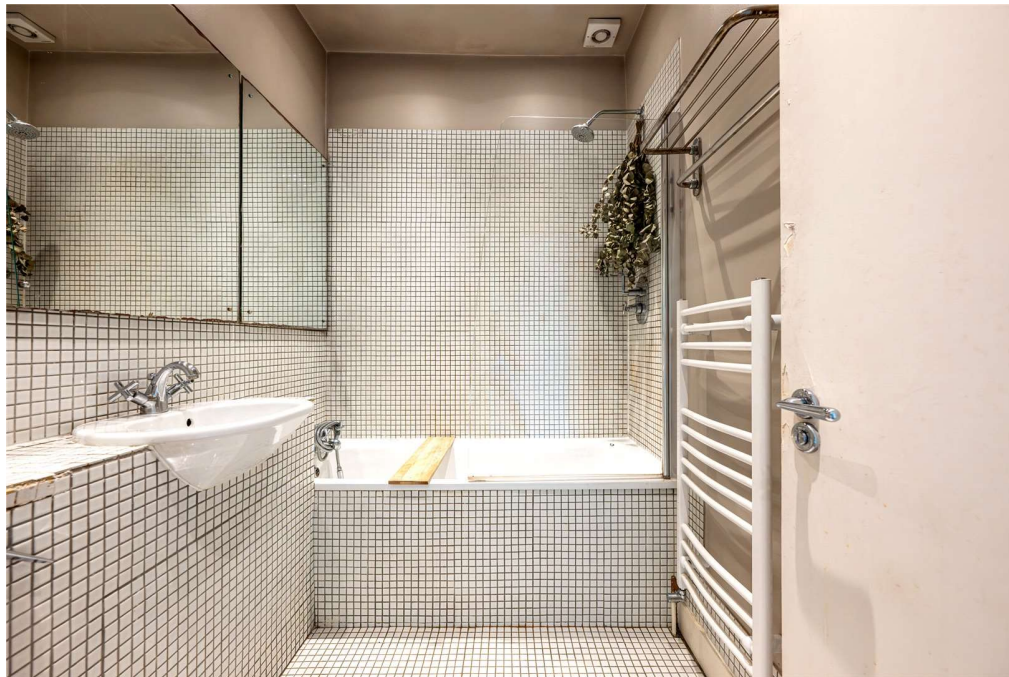
## WESTBOURNE PARK ROAD, W11

**This wonderful second floor , one bedroom flat offers spacious comfortable living in a great location moments from Portobello Road and Westbourne Grove.**

**This property is ideally located near the many wonderful amenities of Notting Hill including Westbourne Grove and Portobello Road with its many shops, bars and restaurants.**

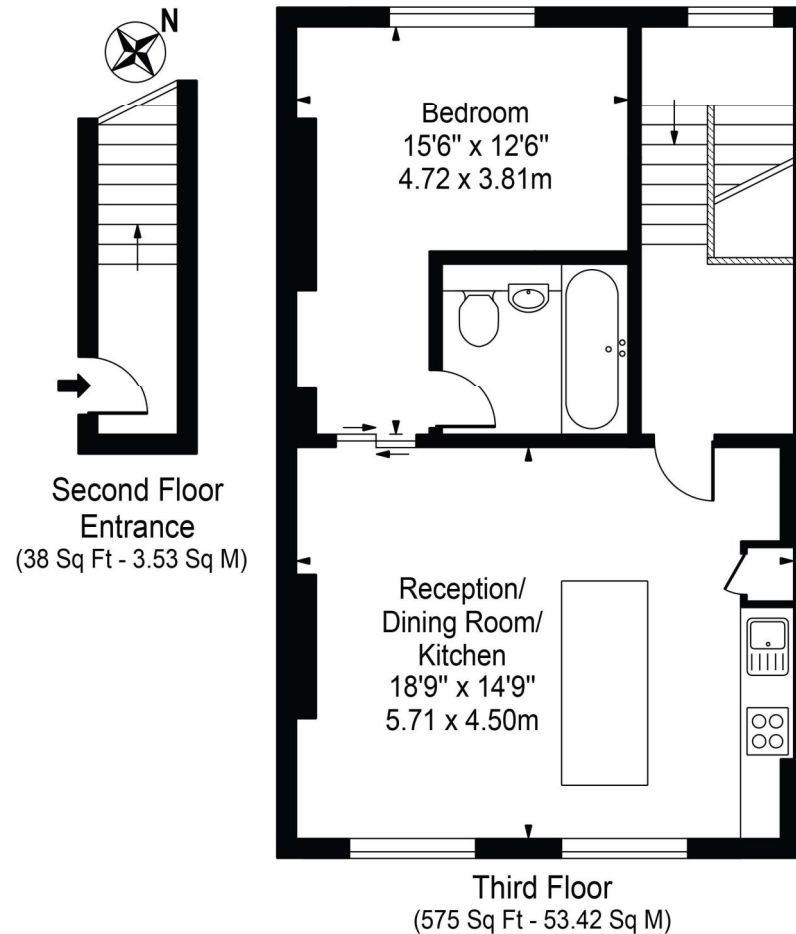






# Westbourne Park Road

Approx. Gross Internal Area 613 Sq Ft - 56.95 Sq M



For Illustration Purposes Only - Not To Scale

This floor plan should be used as a general outline for guidance only and does not constitute in whole or in part an offer or contract. Any intending purchaser or lessee should satisfy themselves by inspection, searches, enquiries and full survey as to the correctness of each statement. Any areas, measurements or distances quoted are approximate and should not be used to value a property or be the basis of any sale or let.

Copyright Morriartl Photography & Design LTD

Score	Energy rating	Current	Potential
92+	A		
81-91	B		
69-80	C	72 C	80 C
55-68	D		
39-54	E		
21-38	F		
1-20	G		

North Kensington | 020 7792 5000 | northkensington@winkworth.co.uk

winkworth.co.uk

Winkworth wishes to inform prospective buyers and tenants that these particulars are a guide and act as information only. All our details are given in good faith and believed to be correct at the time of printing but they don't form part of an offer or contract. No Winkworth employee has authority to make or give any representation or warranty in relation to this property. All fixtures and fittings, whether fitted or not are deemed removable by the vendor unless stated otherwise and room sizes are measured between internal wall surfaces, including furnishings.

**Winkworth**