



CRYSTAL PALACE ROAD, EAST DULWICH, LONDON, SE22
£325,000 LEASEHOLD

A WONDERFUL ONE BEDROOM FIRST FLOOR FLAT SITUATED IN THE CENTRE OF EAST DULWICH JUST OFF LORDSHIP LANE.

DESCRIPTION:

Virtual Tour A wonderful one bedroom first floor flat situated in the centre of East Dulwich just off Lordship Lane. The property comprises of an open plan kitchen-living area, double bedroom and a bathroom. Located close to the bars, restaurants and local amenities on Lordship Lane. Transport links are provided via East Dulwich with connections into London Bridge.

AT A GLANCE

- first-floor flat
- One-bedroom
- Open-plan kitchen
- Spacious double bedroom
- Prime location
- Excellent transport links

Dulwich | 020 8299 2722 | dulwich@winkworth.co.uk

Tenure Leasehold | Council Tax Band B – London Borough of Southwark | EPC Rating C

winkworth.co.uk

Winkworth

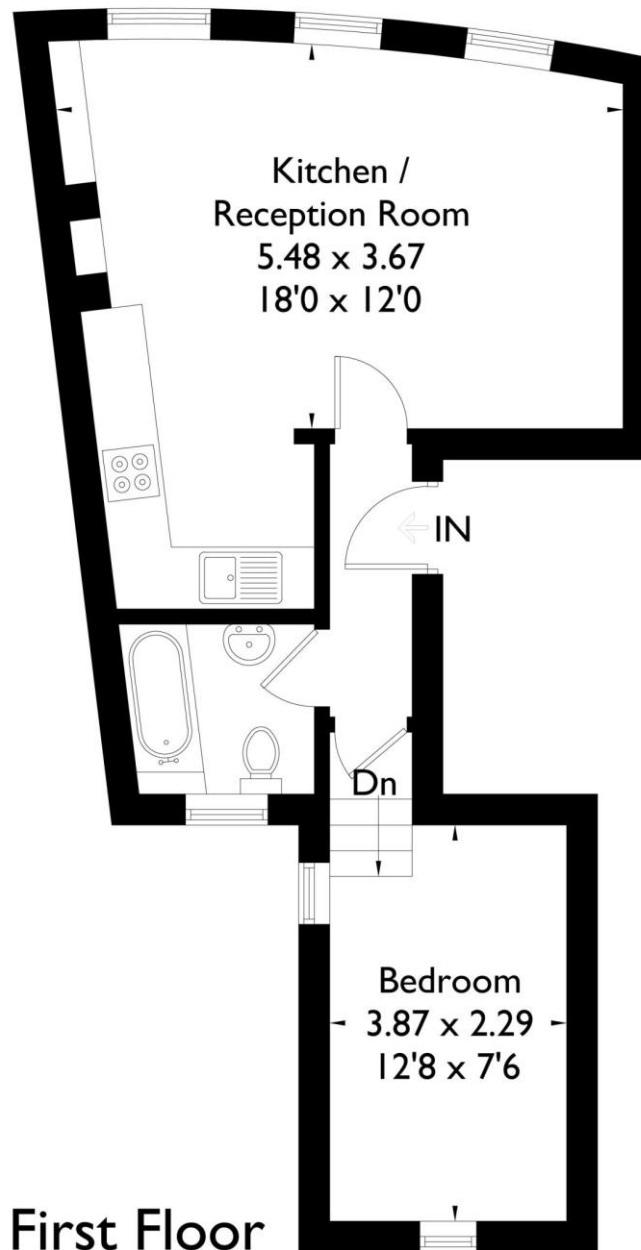
See things differently





Crystal Palace Road, East Dulwich, SE22

Approximate Gross Internal Area = 39 sq m / 420 sq ft

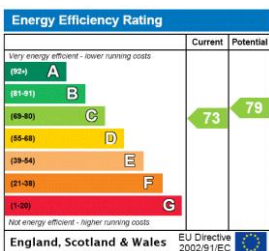


First Floor

FLOORPLANZ © 2015 0845 6344080 Ref: 151631

This plan is for layout guidance only. Drawn in accordance with RICS guidelines. Not drawn to scale unless stated. Windows & door openings are approximate. Whilst every care is taken in the preparation of this plan, please check all dimensions, shapes & compass bearings before making any decisions reliant upon them.

This floorplan is for illustration purposes only and is not to scale. The position and size of doors, windows, appliances and other features are approximate.



Dulwich | 020 8299 2722 | dulwich@winkworth.co.uk

Winkworth

winkworth.co.uk

See things differently

Winkworth wishes to inform prospective buyers and tenants that these particulars are a guide and act as information only. All our details are given in good faith and believed to be correct at the time of printing but they don't form part of an offer or contract. No Winkworth employee has authority to make or give any representation or warranty in relation to this property. All fixtures and fittings, whether fitted or not are deemed removable by the vendor unless stated otherwise and room sizes are measured between internal wall surfaces, including furnishings.