



REDCHURCH STREET, LONDON, E2  
**£400,000 LEASEHOLD**

**FANTASTIC ONE BEDROOM APARTMENT IN  
 THIS HIGHLY SOUGHT AFTER SHOREDITCH  
 LOCATION.**

Shoreditch | 020 7749 7650 | shoreditch@winkworth.co.uk

**Winkworth**

*winkworth.co.uk*

See things differently





## DESCRIPTION:

A large one-bedroom apartment situated on the lower ground floor of this modern development in the heart of Shoreditch. The property spans 695sqf and boasts high ceilings throughout. On entry to the property, you have a large open plan living room/diner with wooden flooring throughout, family bathroom with standing shower, floor to ceiling tiles, wash hand basin and WC, the kitchen offers plenty of space with fully fitted appliances gas hob, built in fridge freezer and washing machine and dish washer. The master bedroom is 12' by 9'10 excluding the built in mirrored wardrobe. There are windows, so natural light does enter the property.

Redchurch Street is located moments from Shoreditch High Street Station and is within close proximity of Liverpool Street Station, Old Street, Aldgate and Whitechapel. It's also ideally placed for City workers who want to walk to and from the office or those who want a commute to Canary Wharf in around 15 minutes. Close by attractions include Brick Lane and Spitalfields Market with a vast array of boutique shops, art galleries, pop ups, cafes, bars and restaurants.

**Winkworth**

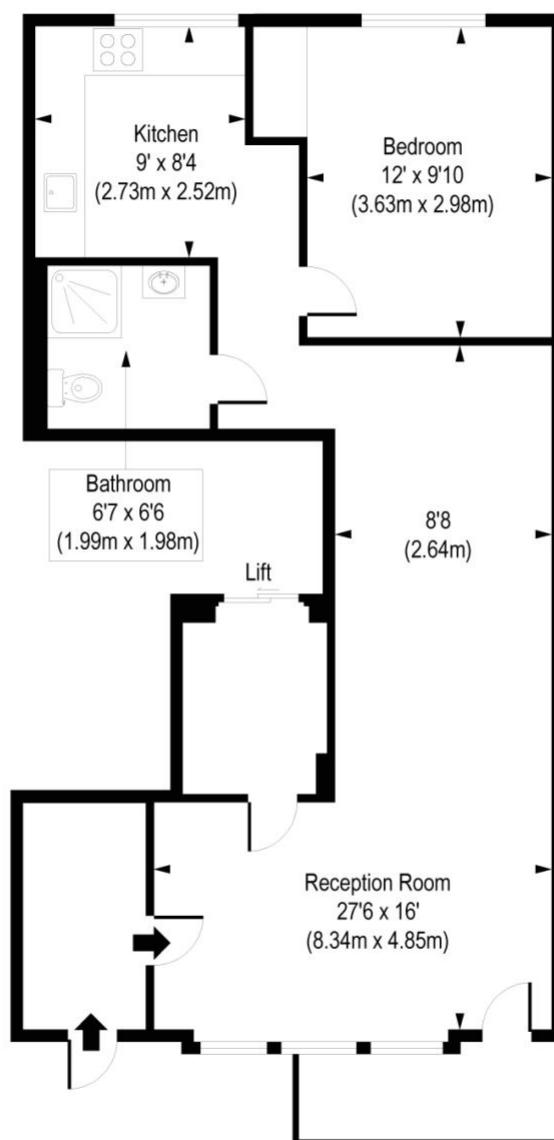
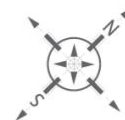


Winkworth



## Redchurch Street, E2

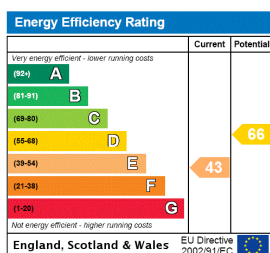
Approx. Gross Internal Area 695 sq. ft / 64.54 sq. m



Basement

COMPLIANT WITH RICS CODE OF MEASURING PRACTICE Floorplan is for illustrative purposes only and is not to scale. Every attempt has been made to ensure the accuracy of the floorplan shown, however all measurements, fixtures, fittings and data shown are an approximate interpretation for illustrative purposes only. Liability for errors, omissions or mis-statement through negligence or otherwise is hereby excluded.

This floorplan is for illustration purposes only and is not to scale. The position and size of doors, windows, appliances and other features are approximate.



Shoreditch | 020 7749 7650 | shoreditch@winkworth.co.uk

**Winkworth**

[winkworth.co.uk](http://winkworth.co.uk)

See things differently

Winkworth wishes to inform prospective buyers and tenants that these particulars are a guide and act as information only. All our details are given in good faith and believed to be correct at the time of printing but they don't form part of an offer or contract. No Winkworth employee has authority to make or give any representation or warranty in relation to this property. All fixtures and fittings, whether fitted or not are deemed removable by the vendor unless stated otherwise and room sizes are measured between internal wall surfaces, including furnishings.