



800 Fulham Road
Fulham, London, SW6 5SL

**To Let: Retail space in
prominent position in SW6.**

736 sq ft
(68.38 sq m)

- Highly prominent location.
- Fully glazed frontage.
- Small patio garden.
- Excellent storage spaces.
- Close to Putney Bridge.

800 Fulham Road, Fulham, London, SW6 5SL

Summary

Available Size	736 sq ft
Rent	£25,000 per annum
Business Rates	Upon Enquiry
EPC Rating	E (118)

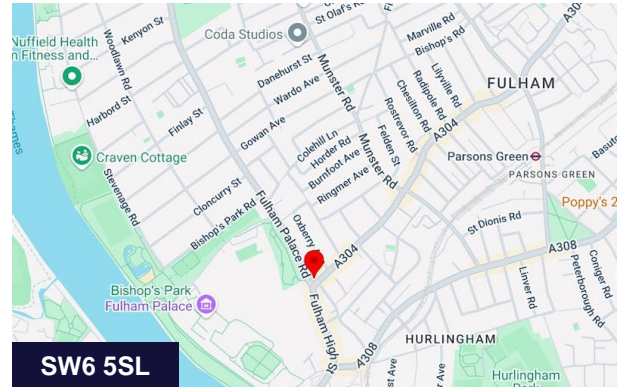
Description

The property enjoys an enviable position along the highly regarded and busy Fulham Road with a fully glazed frontage Ground Floor Showroom space, small patio, and further secondary Basement level retail area all totalling 562 sq.ft.

There is a further well designed storage platform of c.170 sq.ft. for stock room storage. This is a rare and exciting opportunity for a business to gain immense exposure in the heart of SW6.

Location

800 Fulham Road is located in the Fulham area of London, specifically in the borough of Hammersmith and Fulham, with the postcode SW6 5SL. It's situated at the western end of Fulham Road, close to the junction with Fulham Palace Road and Fulham High Street. The property is in a parade of shops and is near both Putney Bridge and Parsons Green stations.



Viewing & Further Information



Adam Stackhouse

07817 004082 | 020 7355 0285
astackhouse@winkworth.co.uk



Chris Ryan

07385 413368 | 020 7355 0285
cryan@winkworth.co.uk

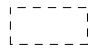
The above information contained within this email is sent subject to contract. These particulars are for general information only and do not constitute any part of an offer or contract. All statements contained therein are made without responsibility on the part of the vendors or lessors and are not to be relied upon as statement or representation of fact. Intending purchasers or lessees must satisfy themselves, by inspection, or otherwise, as to the correctness of each of the statements of dimensions contained in these particulars. Generated on 20/06/2025

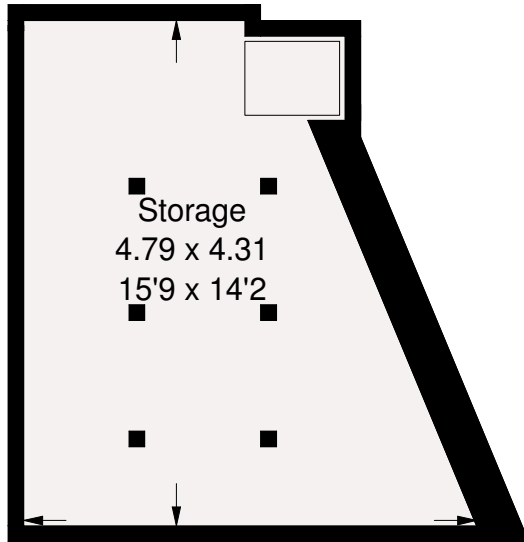
Fulham Road, SW6

Approx. Gross Internal Area = 52.2 sq m / 562 sq ft

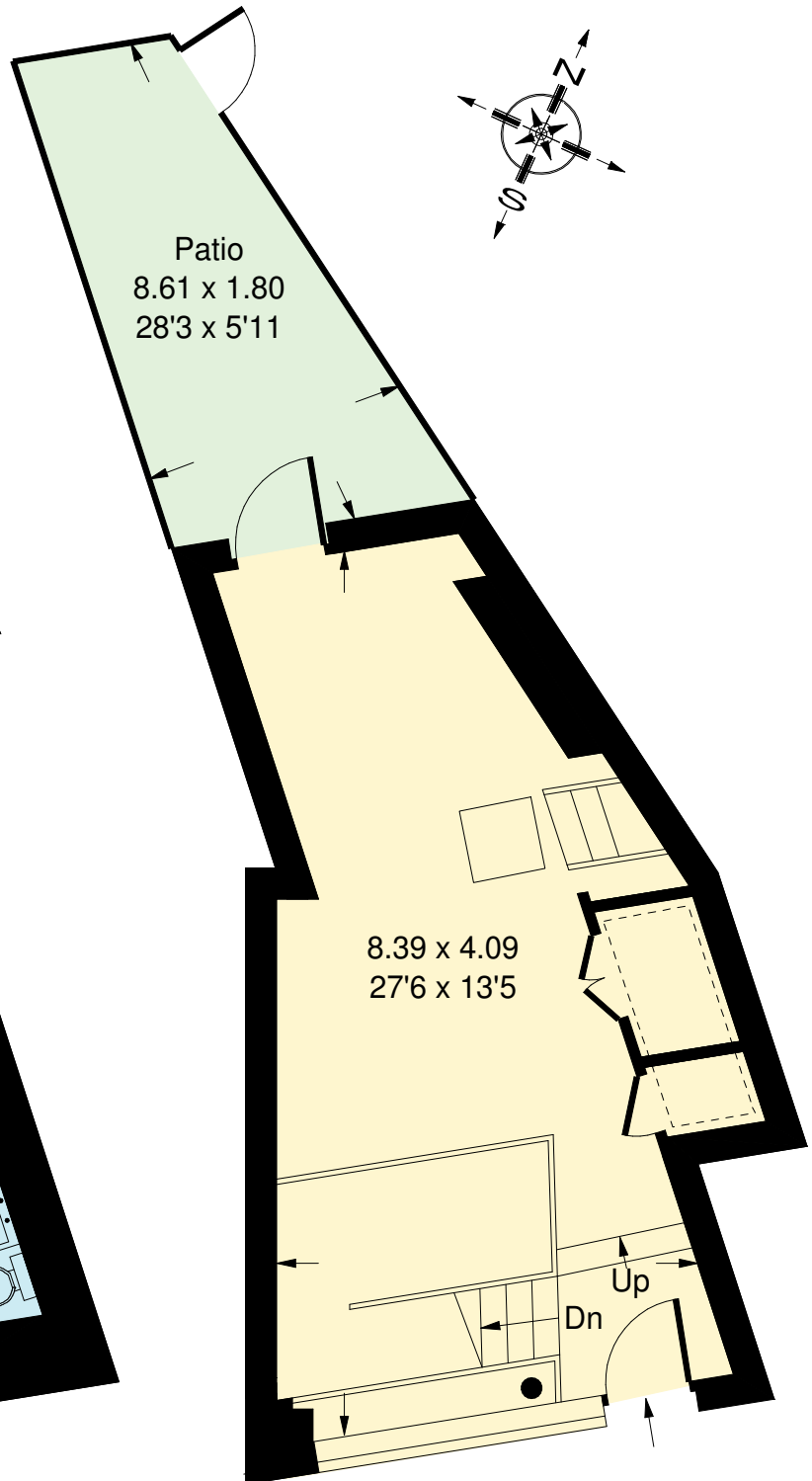
Storage = 16.2 sq m / 174 sq ft

Total = 68.4 sq m / 736 sq ft

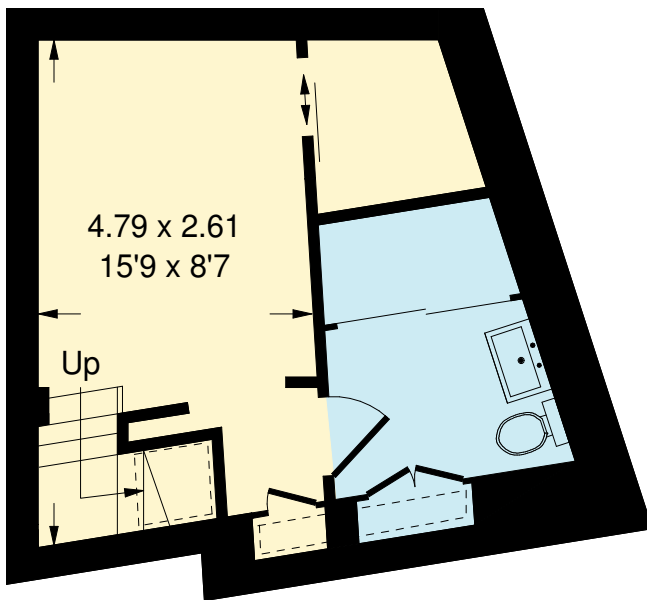
 = Reduced headroom
below 1.5 m / 5'0"



Loft



Ground Floor



Lower Ground Floor

Whilst every attempt has been made to ensure the accuracy of the floor plan, measurements are approximate and not to scale.
No guarantee is given on the total square footage of the property quoted on the plan. Figures given are for guidance.
Plan is for illustration purposes only, not to be used for valuations.