

Ravilious House, King Street, London, W6

£495,000 Leasehold

A stylish one-bedroom apartment set within a sought-after luxury development, offering concierge service, secure storage and lift access.

Reception Room | Open Plan Kitchen | Bedroom | Bathroom | Utility Room | Balcony | 582 Sq Ft / 54 Sq M | Council Tax Band E | EPC Rating Band B

Winkworth

winkworth.co.uk

for every step...



LOCATION

Ravilious House is a prestigious development ideally situated close to the green open spaces of Ravenscourt Park. The development is within easy reach of both Hammersmith and Chiswick High Road, offering a wide range of shops, restaurants, and transport links. Ravenscourt Park Underground Station is a short walk away, with Hammersmith Station also nearby.

DESCRIPTION

A stylish one-bedroom apartment set within a sought-after luxury development, offering concierge service, secure storage and lift access.

The property features a bright and spacious open-plan kitchen, dining and living area, with doors leading onto a private south-west facing balcony — perfect for enjoying afternoon and evening sun.

The generously sized bedroom includes built-in wardrobe space and also benefits from direct access to the balcony, which enjoys attractive views overlooking Ravenscourt Park. This well-presented apartment combines modern living with convenience in a prime location.

Lease: 990 years remaining

Service Charge: £3,504 p.a. (£292 pcm)

Ground Rent: £684.19 p.a.





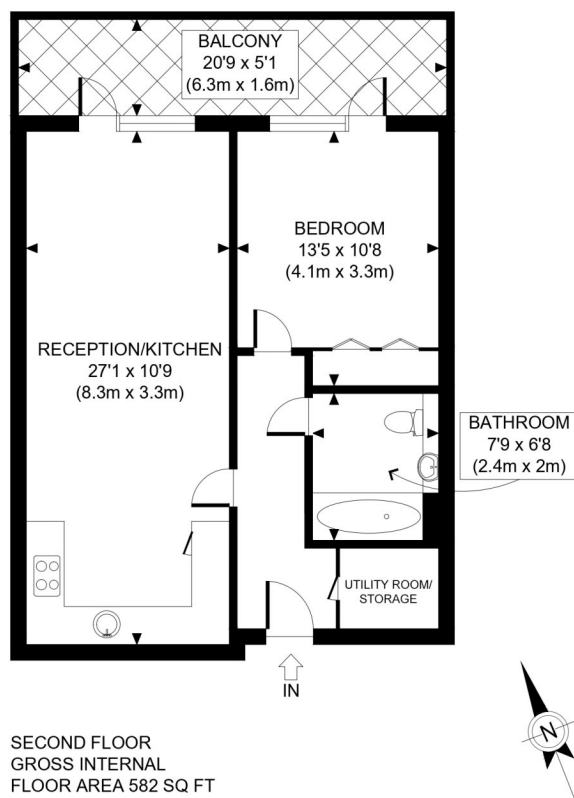
LOCAL AUTHORITY
Hammersmith & Fulham

TENURE
Leasehold 989 years 11 months.

PRICE: £495,000 Leasehold



Score	Energy rating	Current	Potential
92+	A		
81-91	B	84 B	84 B
69-80	C		
55-68	D		
39-54	E		
21-38	F		
1-20	G		



APPROX. GROSS INTERNAL FLOOR AREA: 582 SQ FT/ 54 SQM

Winkworth

This plan is for illustrative purposes only and should be used as such by any prospective client. Whilst every attempt has been made to ensure the accuracy of the Floor Plan contained here, measurements of the doors, windows, rooms and any other items are approximate and no responsibility is taken for any errors, omissions, or misstatement. The services, systems and appliances shown have not been tested and no guarantee as to the operability or efficiency can be given.

PROPERTY PHOTO PLANS .CO.UK
ONE STOP SHOP FOR PROPERTY MEASUREMENTS

The displayed square footage is taken from the floor plans with measurements created using the Royal Institute of Chartered Surveyors' Code of Practice for Measuring. These measurements are approximate and included for illustrative purposes only. Winkworth does not make any representation as to the accuracy of these measurements and you should seek to verify them for yourself. Winkworth accept no liability for any loss you may suffer if you rely on these measurements.

Hammersmith | 0207 371 4466 | hammersmith@winkworth.co.uk

Winkworth

for every step...

Under the Property Misdescriptions Act 1991, these Particulars are a guide and act as information only. All details are given in good faith and are believed to be correct at time of printing. Winkworth give no representation as to their accuracy and potential purchasers or tenants must satisfy themselves by inspection or otherwise as to their correctness. No employee of Winkworth has authority to make or give any representation or warranty in relation to this property.