



HANCOCK ROAD, SE19

£1,600 PER MONTH UNFURNISHED

NEWLY REFURBISHED ONE BEDROOM FLAT FOR RENT

Crystal Palace | 02038693222 | crystalpalace@winkworth.co.uk

Winkworth

for every step...

[winkworth.co.uk](https://www.winkworth.co.uk)



DESCRIPTION:

Winkworth is pleased to offer this modern one bedroom first floor flat for rent.

The property comprises separate fitted kitchen, spacious reception room with space to dine, modern bathroom suite and good-sized bedroom.

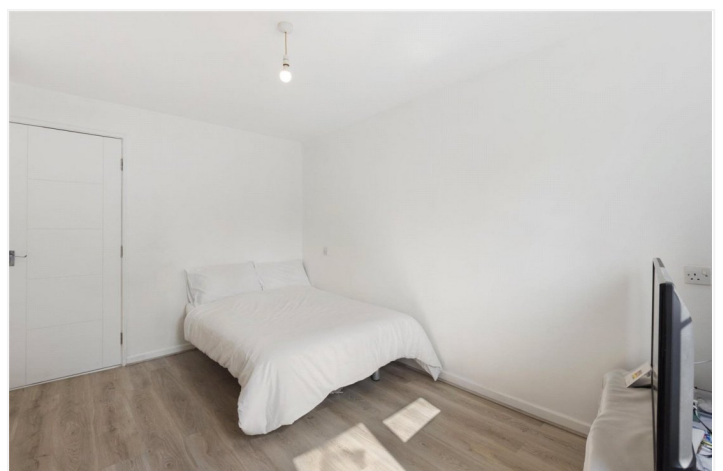
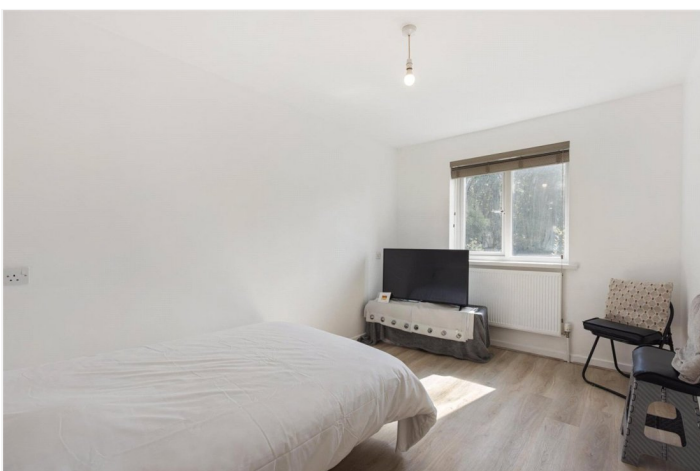
The property has just been completely refurbished throughout to a high specification including new kitchen and bathroom.

Offered ? and available ?

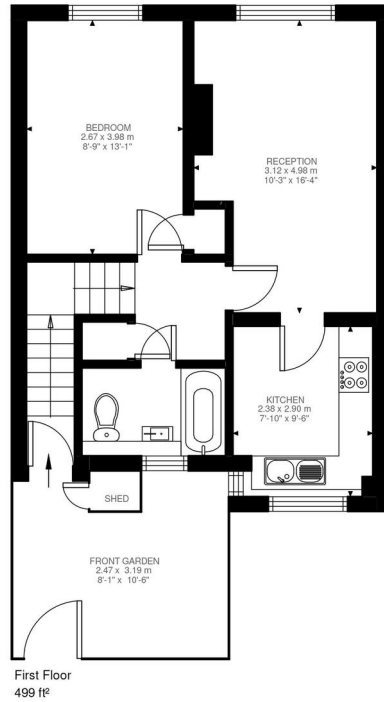
Ideally located a short distance from Crystal Palace 'Triangle' with its vast array of bars, independent shops and restaurants. Gipsy Hill station is a 16 minute walk away and offers great national rail links into London Bridge & Victoria in under 30 minutes.

AT A GLANCE

- One bedroom
- First floor flat
- Newly refurbished throughout
- Available ?
-
- Holding Deposit: £369.23 (1 weeks rent)
- Deposit: £1,846.15 (5 weeks rent)







Hancock Road, SE19
Approximate Gross Internal Area
46.38 SQ.M / 499 SQ.FT

Illustration for identification purposes only. Not to scale.
Floor Plan Drawn According To RICS Guidelines.

This floorplan is for illustration purposes only and is not to scale. The position and size of doors, windows, appliances and other features are approximate.

Score	Energy rating	Current	Potential
92+	A		
81-91	B		
69-80	C	76 C	76 C
55-68	D		
39-54	E		
21-38	F		
1-20	G		

Deposit: £0.00

Holding Deposit:

Council Tax Band:

Where no figures are shown, we have been unable to ascertain the information. All figures that are shown were correct at the time of printing.

Crystal Palace | 02038693222 | crystalpalace@winkworth.co.uk

Winkworth

for every step...

[winkworth.co.uk](https://www.winkworth.co.uk)

Winkworth wishes to inform prospective buyers and tenants that these particulars are a guide and act as information only. All our details are given in good faith and believed to be correct at the time of printing but they don't form part of an offer or contract. No Winkworth employee has authority to make or give any representation or warranty in relation to this property. All fixtures and fittings, whether fitted or not are deemed removable by the vendor unless stated otherwise and room sizes are measured between internal wall surfaces, including furnishings.