



BIRCHGROVE HOUSE, KEW, SURREY, TW9
£3,200 PER MONTH FURNISHED

Brentford | 020 8560 1125 | brentford@winkworth.co.uk



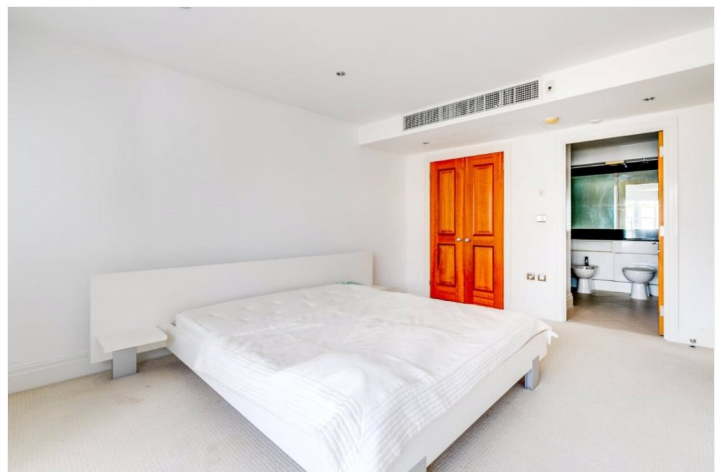
DESCRIPTION:

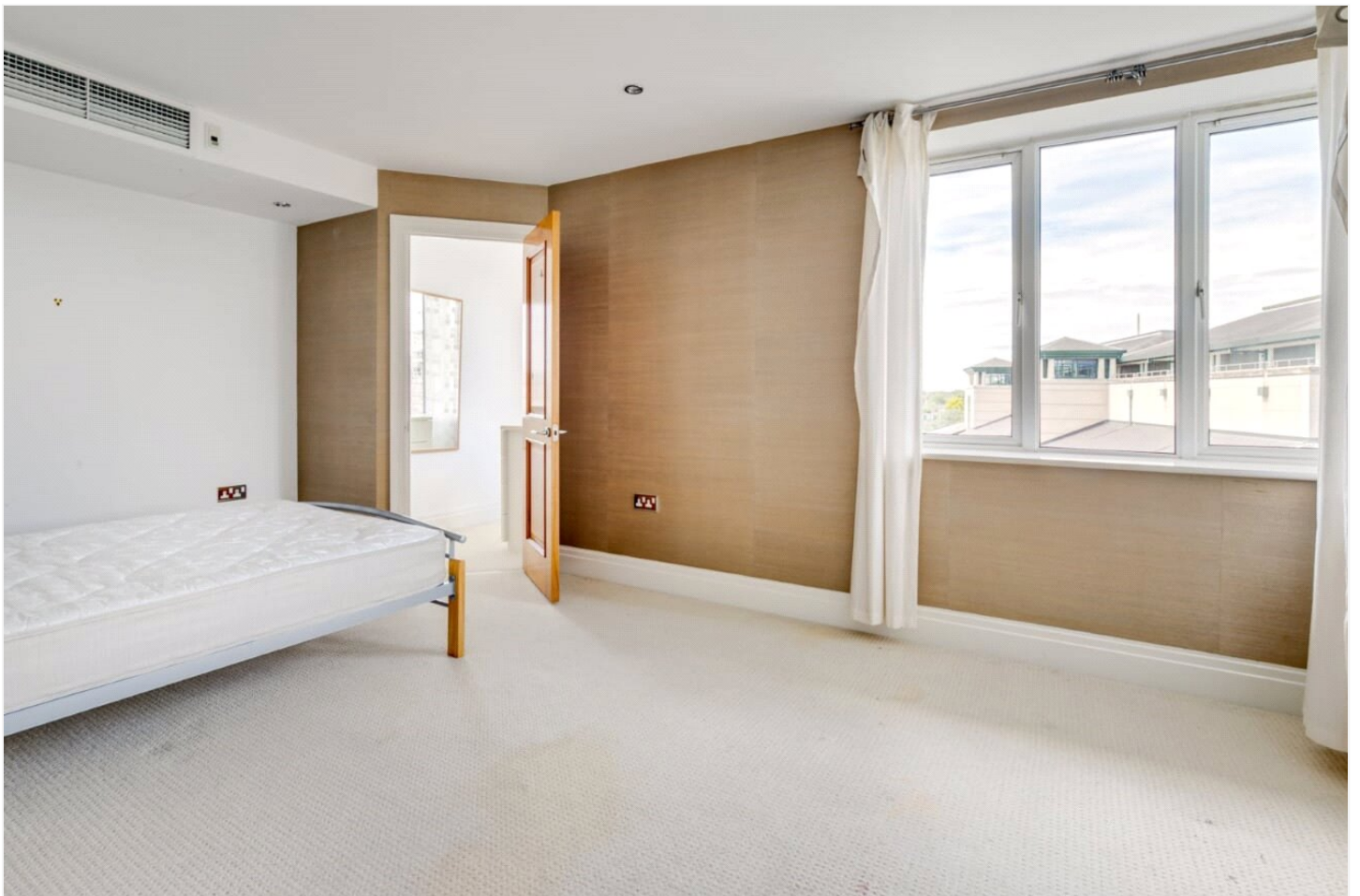
A spacious 1775 sq. ft. / 165 sq. m, three double bedroom, three bathroom, Riverside duplex penthouse apartment benefiting from double reception area, three balconies, communal grounds and gymnasium, concierge in a prestigious development within easy reach of Kew Gardens station and local shops and restaurants. Fully Furnished and available now

AT A GLANCE



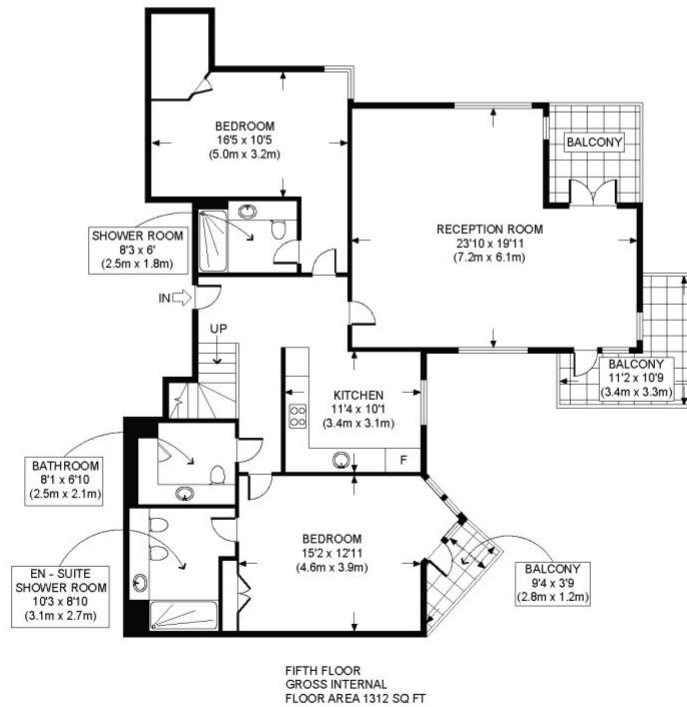
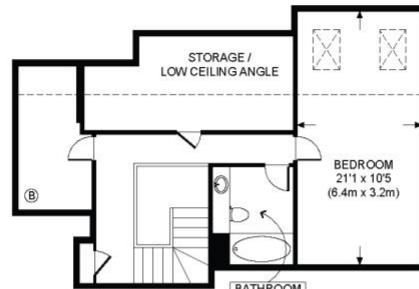
This three double bedroom apartment is furnished to a high standard throughout. The property benefits from under floor heating as well as air conditioning to the reception room, kitchen with separate utility room / w.c, three double bedrooms and three / four bathrooms. There





BIRCHGROVE HOUSE, TW9

TOTAL APPROX. FLOOR AREA 1775 SQ. FT. (164.9 SQ. M.)
(EXCLUDING RESTRICTED HEIGHT AREA)



All measurements walls, doors, windows, fitting and their appliances, their size and locations are shown conventionally and are approximate only and cannot be regarded as being a representation either by the seller or his agent nor zentuvo
www.zentuvo.co.uk

This floorplan is for illustration purposes only and is not to scale. The position and size of doors, windows, appliances and other features are approximate.

