



Sinclair Road, W14

£390,000 Share of Freehold

A smart one bedroom flat on the second floor of an imposing Victorian townhouse.

Reception Room | Kitchen | Bedroom | Bathroom | 384 Sq Ft / 36 Sq M | Council Tax Band C | EPC Rating Band D

Winkworth

winkworth.co.uk

for every step...



LOCATION

The property is situated towards the western end of Sinclair Road, ideal for Brook Green's fantastic selection of pubs, restaurants, shops and cafés, with a further more comprehensive range available at both Westfield London and Kensington High Street. Superb transport links are on offer; the closest Underground stations being Kensington Olympia, Shepherds Bush, West Kensington and Hammersmith.

DESCRIPTION

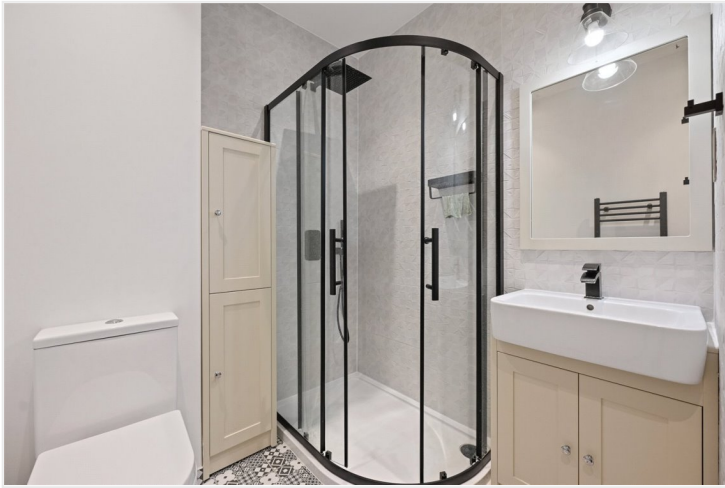
Well presented throughout, the property benefits from accommodation comprising entrance hall, bedroom, shower room and reception room with semi open plan kitchen, featuring a full range of integrated appliances. An ideal first time buy.

Share of freehold with an underlying lease of 999 years from 7 June 2023

Service Charge:- £3,100 p.a.

Ground Rent:- N/A

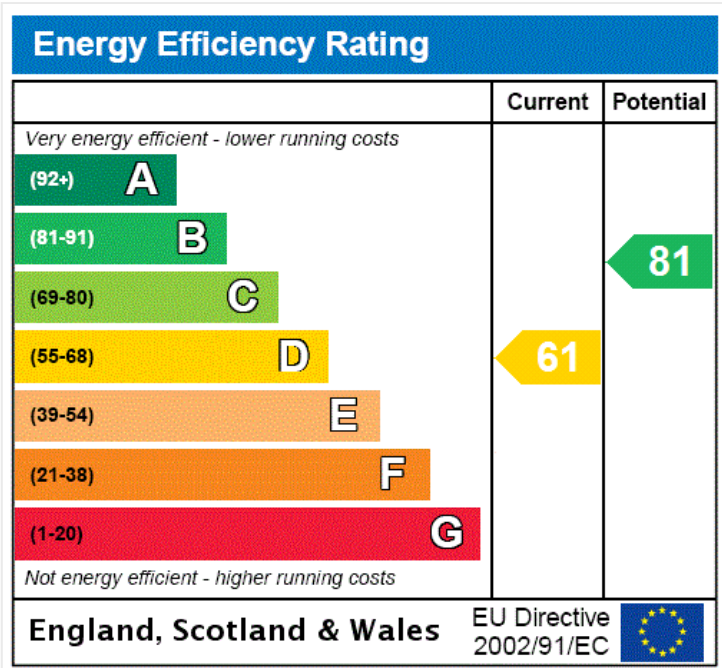


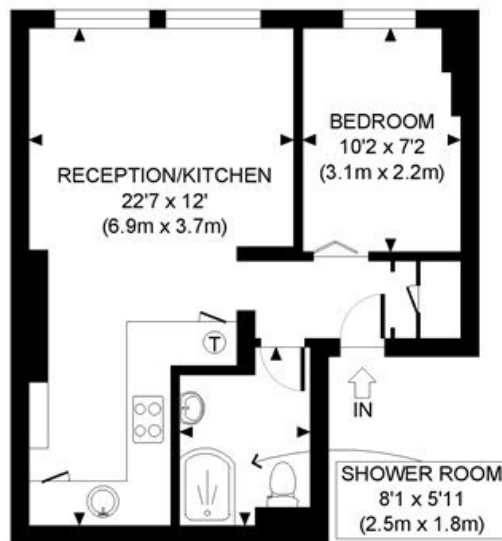


LOCAL AUTHORITY
Hammersmith & Fulham

TENURE
Share of Freehold 997 years 1 months.

PRICE: £390,000 Share of Freehold





SECOND FLOOR
GROSS INTERNAL
FLOOR AREA 384 SQ FT



APPROX. GROSS INTERNAL FLOOR AREA: 384 SQ FT/ 36 SQM

Winkworth

This plan is for illustrative purposes only and should be used as such by any prospective client. Whilst every attempt has been made to ensure the accuracy of the Floor Plan contained here, measurements of the doors, windows, rooms and any other items are approximate and no responsibility is taken for any errors, omissions, or misstatement. The services, systems and appliances shown have not been tested and no guarantee as to the operability or efficiency can be given.

PROPERTY PHOTO PLANS
THE WAY TO THE PROPERTY YOU WANT

The displayed square footage is taken from the floor plans with measurements created using the Royal Institute of Chartered Surveyors' Code of Practice for Measuring. These measurements are approximate and included for illustrative purposes only. Winkworth does not make any representation as to the accuracy of these measurements and you should seek to verify them for yourself. Winkworth accept no liability for any loss you may suffer if you rely on these measurements.

Shepherds Bush | 020 8735 3266 | shepherdsbush@winkworth.co.uk

Winkworth

for every step...

Under the Property Misdescriptions Act 1991, these Particulars are a guide and act as information only. All details are given in good faith and are believed to be correct at time of printing. Winkworth give no representation as to their accuracy and potential purchasers or tenants must satisfy themselves by inspection or otherwise as to their correctness. No employee of Winkworth has authority to make or give any representation or warranty in relation to this property.