



ALFRED STREET, BERKSHIRE, RG1 7AU  
£330,000 LEASEHOLD

A TWO BEDROOM APARTMENT WITH BALCONY  
OCCUPYING A 7TH FLOOR POSITION WITHIN  
THE EVER POPULAR CHATHAM PLACE

Reading | 0118 4022 300 | [reading@winkworth.co.uk](mailto:reading@winkworth.co.uk)

**Winkworth**

for every step...

[winkworth.co.uk](http://winkworth.co.uk)





## DESCRIPTION:

A contemporary apartment occupying a 7th floor position within the ever popular Chatham Place, ideally positioned within walking distance of the vibrant town centre shops and restaurants and the mainline station. The well-planned 2 bedroom apartment benefits from a 25' open-plan living room with a sliding wall accessing the 2nd bedroom and a balcony enjoying easterly townscape views. The development features a concierge facility, well-kept communal grounds incorporating a residents courtyard, residents lift and allocated parking space in the undercroft car park. No onward chain.

## AT A GLANCE

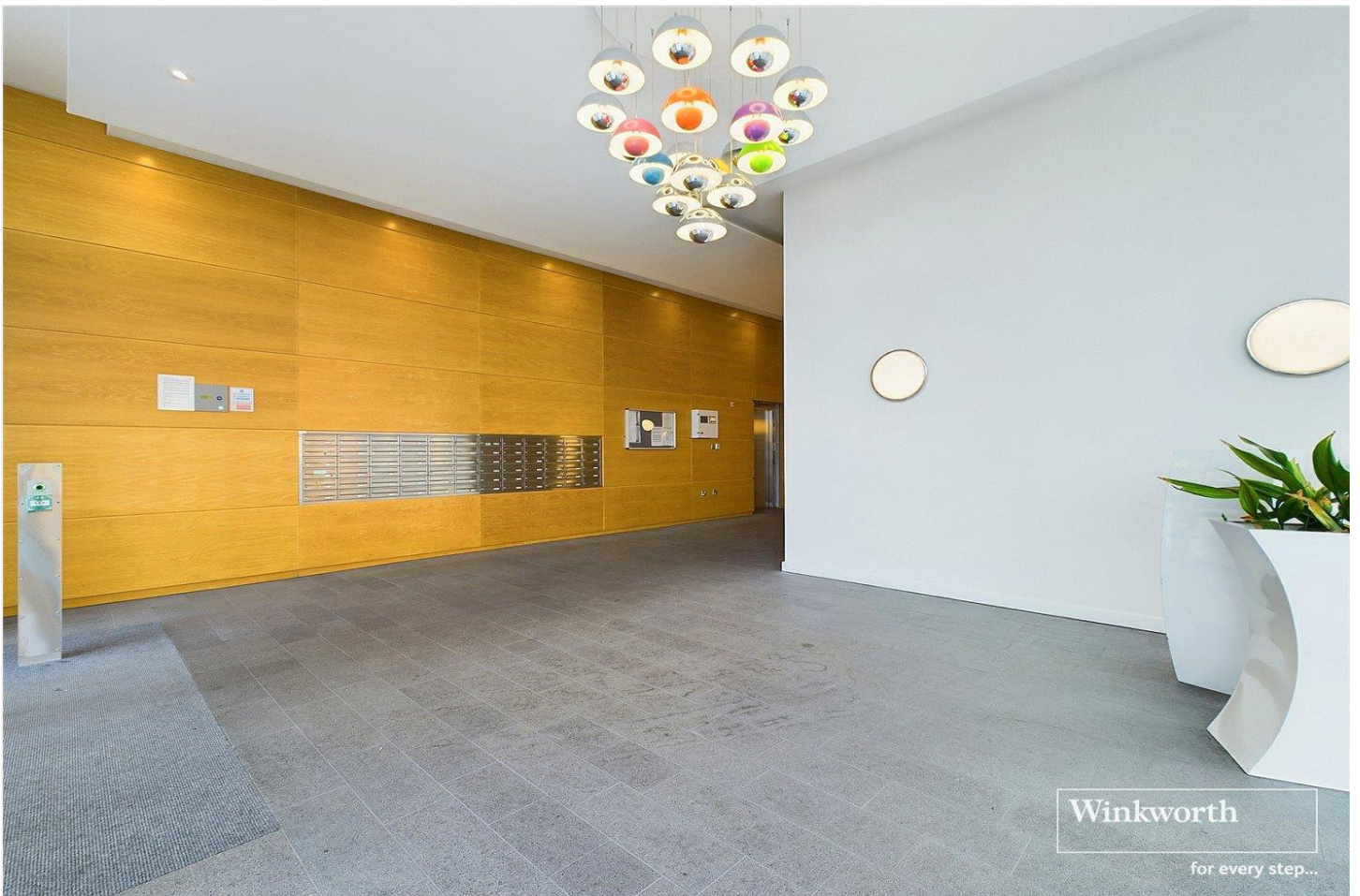
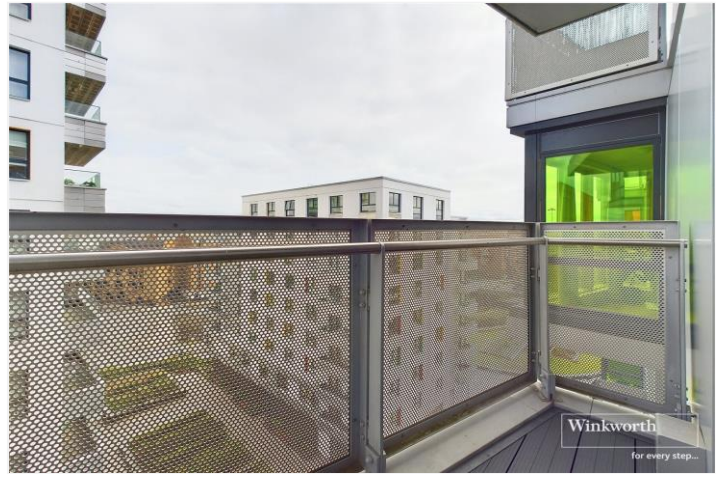
- 2 Double Bedroom Apartment
- En-suite to Master Bedroom
- Open-plan Living room with balcony
- Concierge; Communal residents courtyard
- Allocated Undercroft Parking Space
- Walking distance to Reading Train Station
- No onward chain



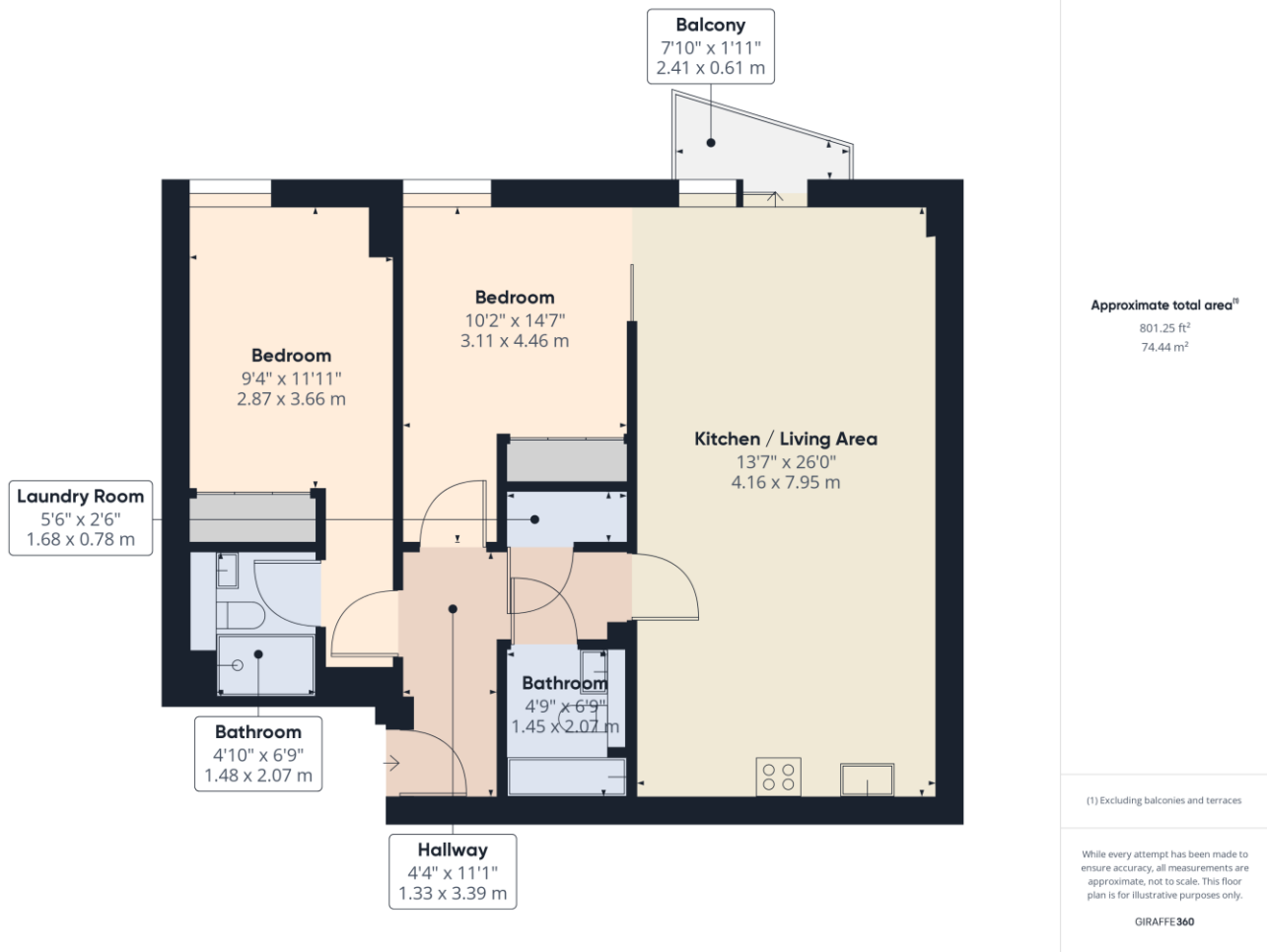












This floorplan is for illustration purposes only and is not to scale. The position and size of doors, windows, appliances and other features are approximate.

**Lease Information - Years remaining: 234**

**Ground rent: £350 PA**

**Service charge: £1060 every 6 months**

**Ground rent review period: Every 10 years, review 2034  
in line with RPI**

Reading | 0118 4022 300 | [reading@winkworth.co.uk](mailto:reading@winkworth.co.uk)

**Winkworth**

**for every step...**

[winkworth.co.uk](http://winkworth.co.uk)

Winkworth wishes to inform prospective buyers and tenants that these particulars are a guide and act as information only. All our details are given in good faith and believed to be correct at the time of printing but they don't form part of an offer or contract. No Winkworth employee has authority to make or give any representation or warranty in relation to this property. All fixtures and fittings, whether fitted or not are deemed removable by the vendor unless stated otherwise and room sizes are measured between internal wall surfaces, including furnishings.