



Harrington Gardens, South Kensington, London, SW7

£576.92 per week* / £2,500 per month – Part Furnished / Unfurnished

Recently decorated throughout, a bright one bedroom property on the third floor (with lift) of this well-maintained Victorian conversion.

1 Bedroom | 1 Reception Room | 1 Bathroom | Third Floor Flat | Lift | 474 Approx sq ft | EPC: C

APPLICANT FEES MAY BE APPLICABLE
DEPOSIT OF 5 WEEKS' RENT
HOLDING DEPOSIT OF 1 WEEK'S RENT

Winkworth

winkworth.co.uk

for every step...



DESCRIPTION

This homely flat features a spacious reception room with separate kitchen, well-proportioned double bedroom with built-in wardrobe and separate bathroom. The property benefits from a bright Southerly aspect and is ideally positioned close to the transport and shopping facilities of Gloucester Road.

The flat is available immediately on an unfurnished or part-furnished basis.

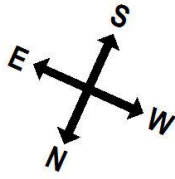
ACCOMMODATION

1 Bedroom, 1 Reception Room, 1 Bathroom, Third Floor Flat, Lift, Part-Furnished or Unfurnished, 474 Approx Sq ft

COUNCIL TAX BAND

Band G

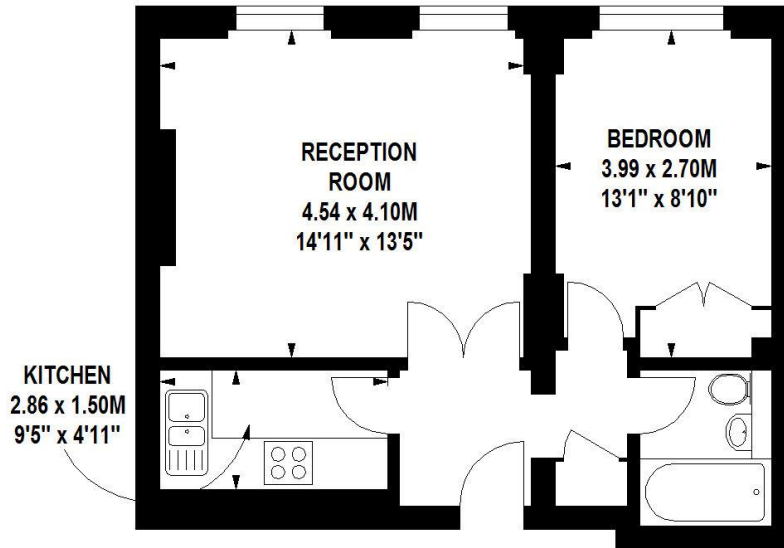




Harrington Gardens, SW7

Approximate gross internal area

44 sq.m / 474 sq. ft



Third Floor

Floorplan produced for WINKWORTH by Mays Floorplans © . Tel 020 8871 4668

Illustration for identification purposes only, not to scale

All measurements are maximum, and includes wardrobes and window bays where applicable

Energy Efficiency Rating		
	Current	Potential
Very energy efficient - lower running costs		
(92+) A		
(81-91) B		
(69-80) C	71	83
(55-68) D		
(39-54) E		
(21-38) F		
(1-20) G		
Not energy efficient - higher running costs		
England, Scotland & Wales	EU Directive 2002/91/EC	

This floorplan is for illustration purposes only and is not to scale. The position and size of doors, windows, appliances and other features are approximate.

*Please note, the rent cannot be paid on a weekly basis

South Kensington Lettings | 020 7370 6767 | lettings.southken@winkworth.co.uk

Winkworth

winkworth.co.uk

for every step...

Winkworth wishes to inform prospective buyers and tenants that these particulars are a guide and act as information only. All our details are given in good faith and believed to be correct at the time of printing but they don't form part of an offer or contract. No Winkworth employee has authority to make or give any representation or warranty in relation to this property. All fixtures and fittings, whether fitted or not are deemed removable by the vendor unless stated otherwise and room sizes are measured between internal wall surfaces, including furnishings.