



ST THOMAS'S ROAD, LONDON, N4
£475 PER WEEK

A STUNNING TWO BEDROOM PERIOD CONVERSION WITH ITS OWN FRONT DOOR

Islington | 0207 354 2480 | islington@winkworth.co.uk

Tenant Fees Apply: Details of fees for tenant referencing, tenancy agreement admin fees and renewal fees are available on the Winkworth website and the link can be found with the displayed rent for the property. Tenants should ensure they are fully conversant with these upfront fees and other costs that are involved at the outset of the tenancy before making an offer to rent and your local Winkworth office will provide written details upon request.

winkworth.co.uk

Winkworth

See things differently



DESCRIPTION:

Spanning over the top two floors of this beautiful Victorian house is this 900 sq ft stunning two-bedroom maisonette. The property consists of a phenomenally light living space with a large reception room and separate eat-in kitchen making it a perfect entertaining apartment. At the top of the property you will find two generous double bedrooms and contemporary bathroom. The property also benefits from having its own private entrance, plenty of storage throughout and is in a superb condition.

St Thomas's Road is set in the popular 'Blackstock Triangle' known for its village atmosphere and tree lined streets. The property is located a short distance to a number of leading Islington schools and the Highbury Barn locale. For the outdoor enthusiast there are several sporting options nearby with Finsbury Park, Clissold Park and Highbury Fields offering wonderful spaces for recreation, and Gillespie Nature reserve and the Parkland walk for a leisurely stroll. Transport links are amongst some of the best in London with the Finsbury Park hub (Victoria and Piccadilly lines and over ground services and substantial bus network) offering speedy access to Upper Street, the City, the West End, and International rail services at Kings Cross St Pancras.

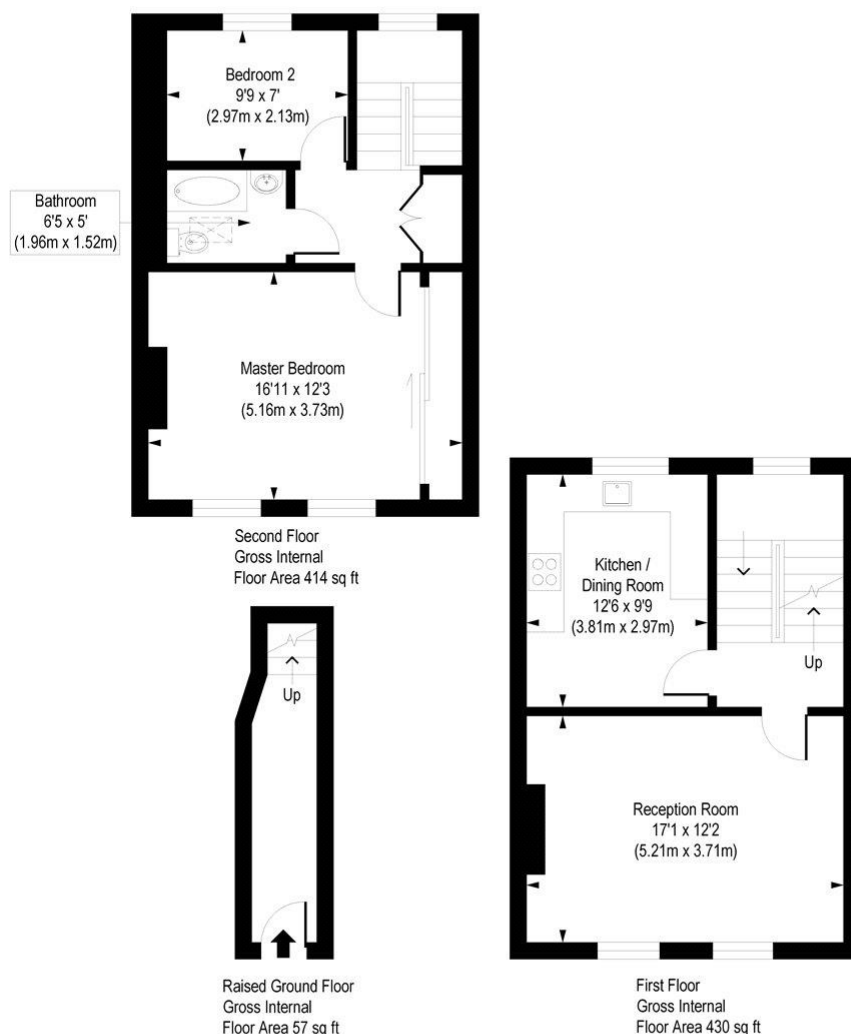
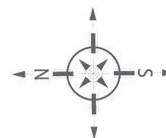
Winkworth



Winkworth

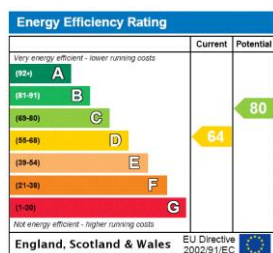
St. Thomas's Road, N4

Approx. Gross Internal Floor Area 901 sq. ft / 83.75 sq. m



COMPLIANT WITH RICS CODE OF MEASURING PRACTICE. Floorplan is for illustrative purposes only and is not to scale. Every attempt has been made to ensure the accuracy of the floorplan shown, however all measurements, fixtures, fittings and data shown are an approximate interpretation for illustrative purposes only. Liability for errors, omissions or mis-statement through negligence or otherwise is hereby excluded.

This floorplan is for illustration purposes only and is not to scale. The position and size of doors, windows, appliances and other features are approximate.



Islington | 0207 354 2480 | islington@winkworth.co.uk

Winkworth

winkworth.co.uk

See things differently

Winkworth wishes to inform prospective buyers and tenants that these particulars are a guide and act as information only. All our details are given in good faith and believed to be correct at the time of printing but they don't form part of an offer or contract. No Winkworth employee has authority to make or give any representation or warranty in relation to this property. All fixtures and fittings, whether fitted or not are deemed removable by the vendor unless stated otherwise and room sizes are measured between internal wall surfaces, including furnishings.