

HENDON LANE, LONDON, N3
N THE REGION OF £650,000 | SHARE OF FREEHOLD

A LUXURIOUS THREE BEDROOM, TWO BATHROOM FIRST FLOOR PURPOSE BUILT APARTMENT

Finchley | 020 8349 3388 | finchley@winkworth.co.uk

Winkworth

for every step...

winkworth.co.uk



Winkworth

DESCRIPTION:

A luxurious three bedroom, two bathroom, first floor, purpose built apartment. Set in a modern block, on the ever popular Hendon Lane, and being ideally located for amenities on Regents Park Road and Temple Fortune, as well as Finchley Central Underground Station and recreational parkland, such as College Farm and Stephens House & Gardens. The property comprises of a spacious reception room, three bedrooms, two bathrooms, lift-in-block, storage units, two allocated parking spaces and communal gardens. An internal viewing is highly recommended!

Offered on a chain free basis.

AT A GLANCE

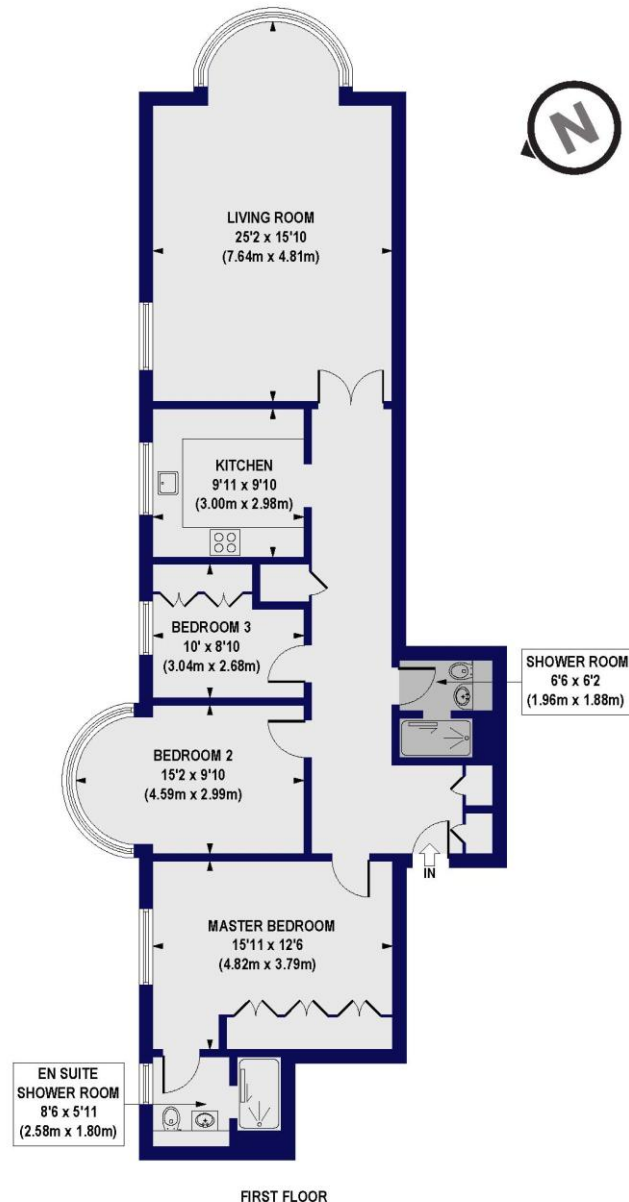
- Purpose built apartment
- First floor
- Three bedrooms
- Two bathrooms
- Lift-in-Block
- Allocated Parking
- Storage Units
- Communal Gardens





Hendon Lane, N3

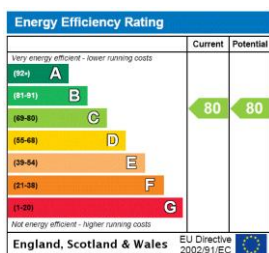
Approx. Gross Internal Floor Area 1195 sq. ft / 111.05 sq. m



All measurements of walls, doors, windows, fittings and appliances, including their size and location, are shown as standard sizes and do not constitute any warranty or representation by the seller, their agent or CP Creative. Any intending purchaser must satisfy himself by inspection or otherwise as to the correctness of the information contained in these plans. This plan is for illustrative purposes only and should be used as such by any prospective purchasers.

Winkworth

This floorplan is for illustration purposes only and is not to scale. The position and size of doors, windows, appliances and other features are approximate.



Tenure: Share of Freehold

Term: 93 year and 6 months

Service Charge: £6312 per annum

Ground Rent: £ 0 Annually (subject to increase)

Council Tax Band: G

Where no figures are shown, we have been unable to ascertain the information. All figures that are shown were correct at the time of printing.

Winkworth

Finchley | 020 8349 3388 | finchley@winkworth.co.uk

for every step...

winkworth.co.uk

Winkworth wishes to inform prospective buyers and tenants that these particulars are a guide and act as information only. All our details are given in good faith and believed to be correct at the time of printing but they don't form part of an offer or contract. No Winkworth employee has authority to make or give any representation or warranty in relation to this property. All fixtures and fittings, whether fitted or not are deemed removable by the vendor unless stated otherwise and room sizes are measured between internal wall surfaces, including furnishings.